

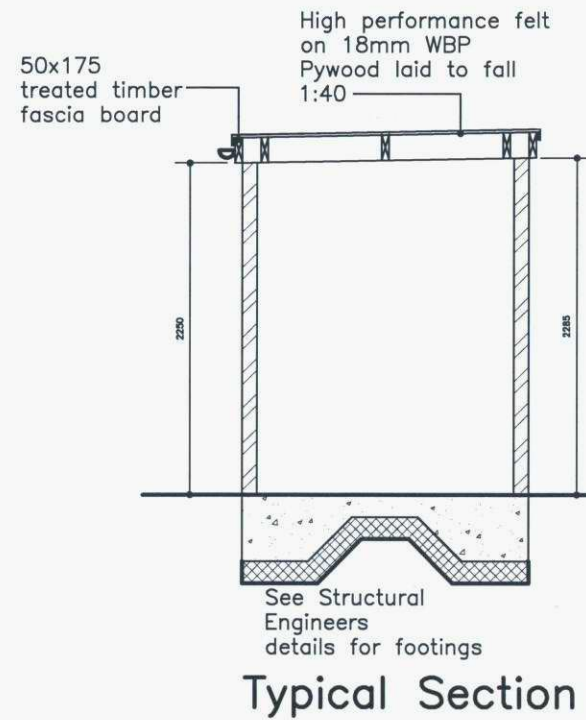
Railway Inn, Hampton

10/0013/DD01

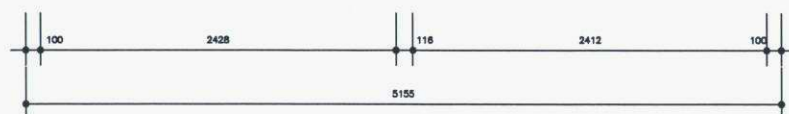
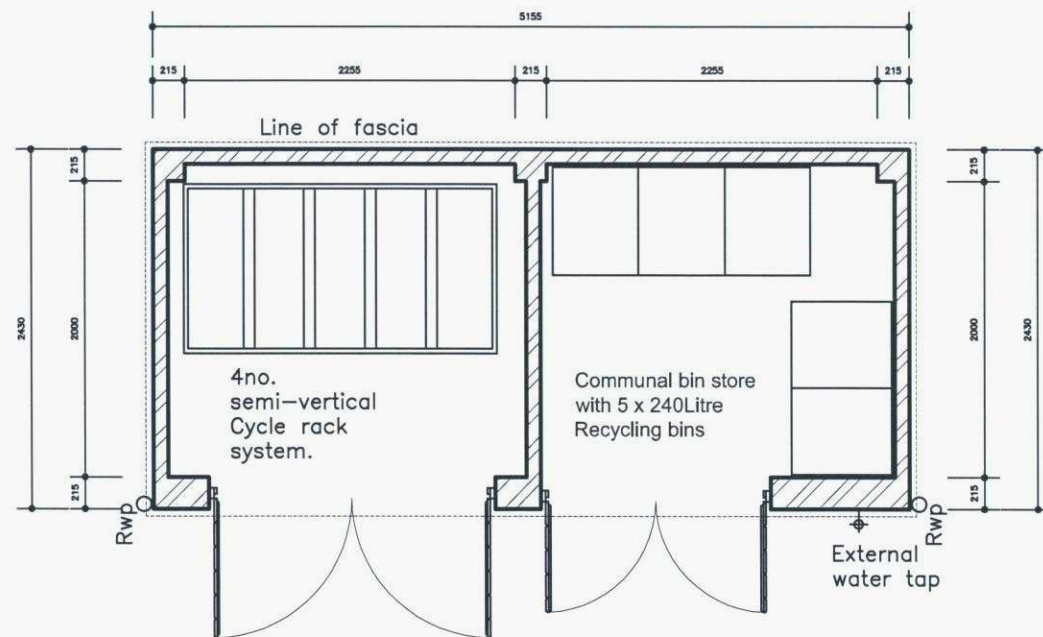
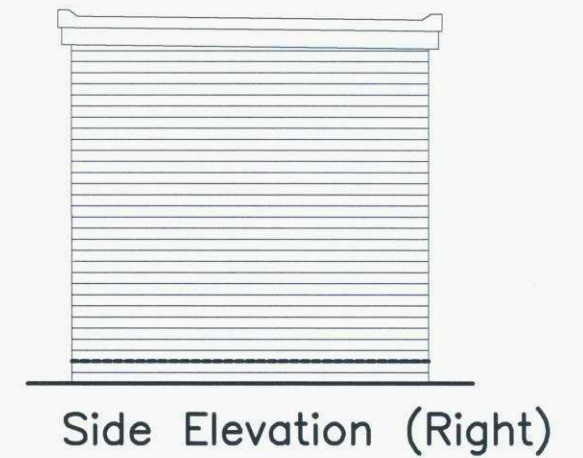
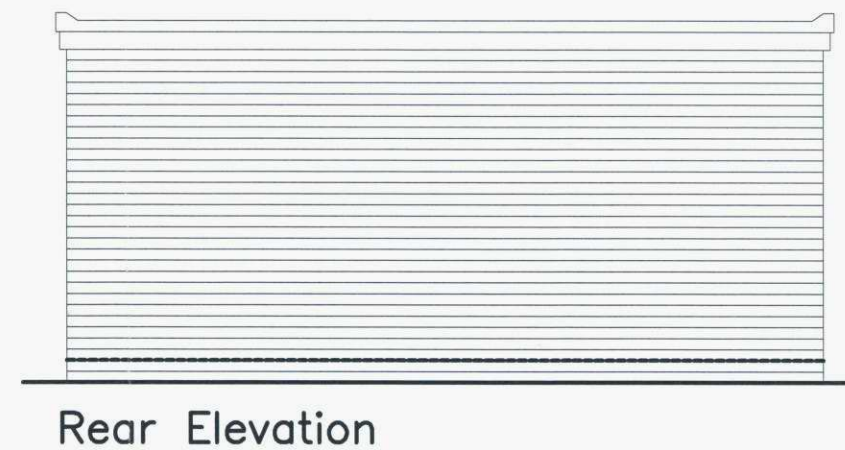
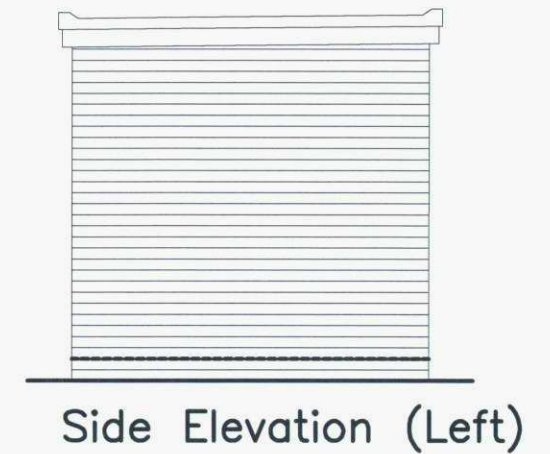
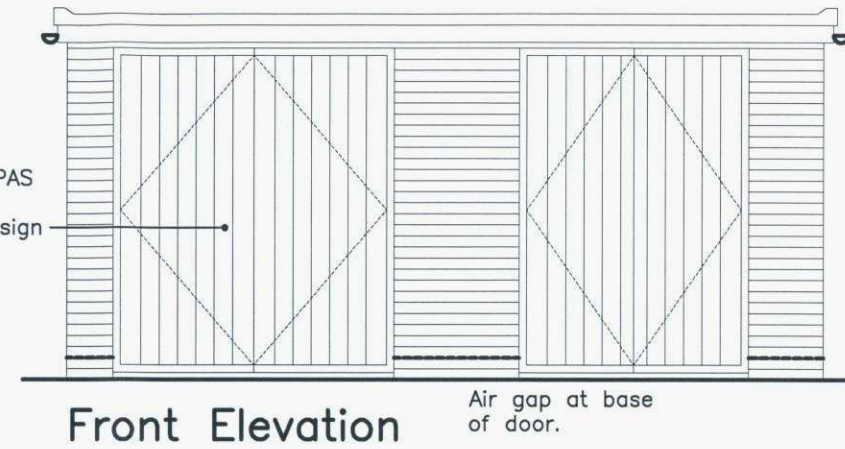
Do not scale from this print. Use figured dimensions only. Contractors are responsible for taking and checking site dimensions.

Design copyright is vested in the Company below from whom consent must be obtained for copying or reproducing this drawing.

PRELIMINARY



Door to be: PAS 24 DR, to Secure by Design specification.



Cycle Store & Bin/Recycling Store - Stand Alone

Cycle & Bin Store Details



FIRST FLOOR 7A SALISBURY SQUARE
OLD HATFIELD HERTS AL9 5AD
T 01707 270 077 F 01707 270 078
W www.ashbydesign.co.uk

A Updated to show combined bin & cycle store

23/02/11

Project
Railway Inn, 147 Station Road,
Hampton

Title
Cycle & Bin Store Details

Scale
1:50 @ A3

Date
January 2011

Drawn
JB

Checked
SRH

Drawing No.
174/11/501

Revision
A