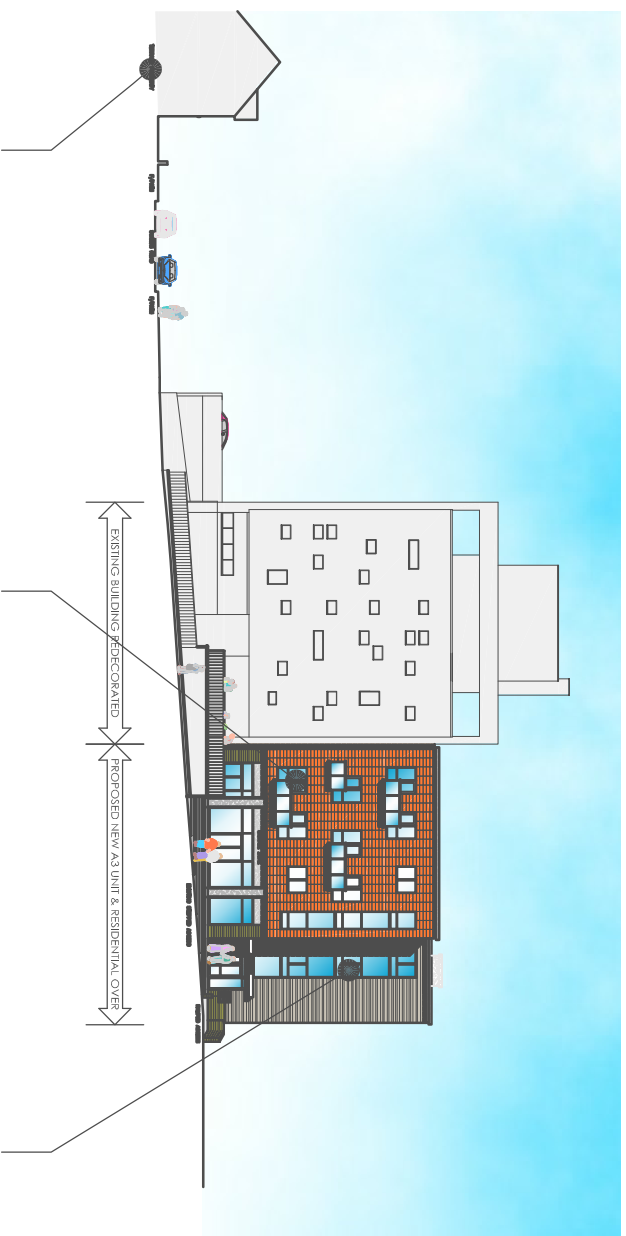
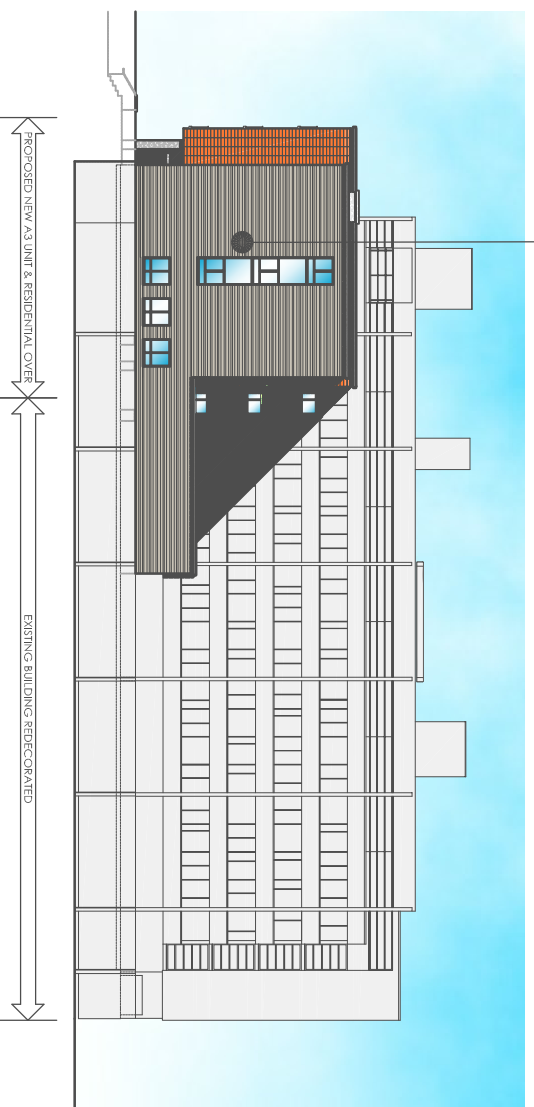


HIGH STREET - NORTH ELEVATION



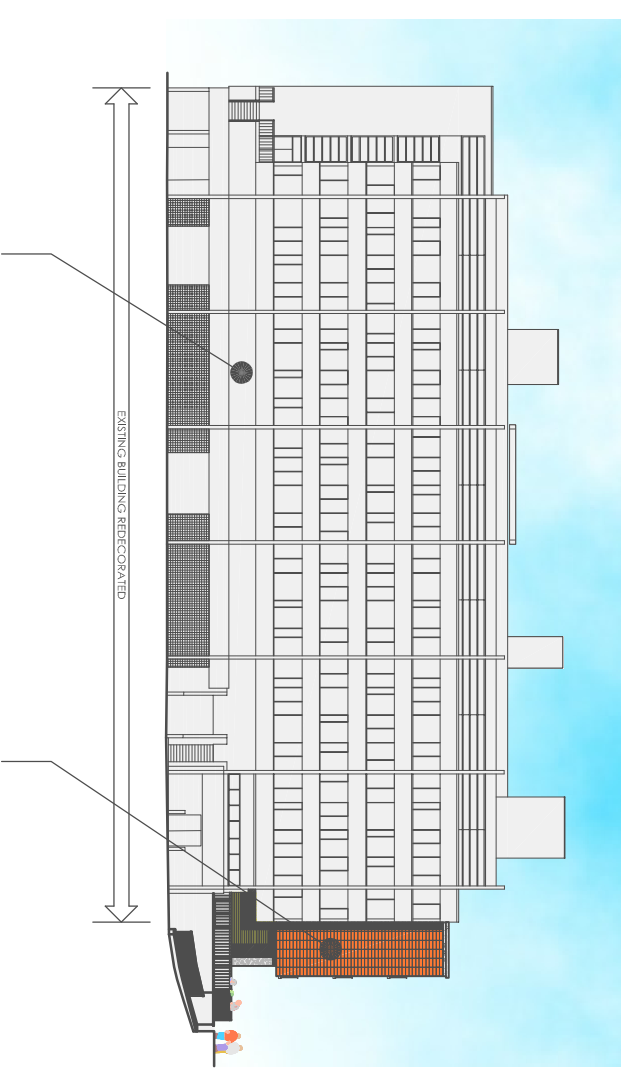
- EXISTING 2 STOREY RESIDENTIAL PROPERTY ADJACENT TO SITE
- WINDOWS TO APARTMENT BLOCK ARE PROPORTIONED TO MAXIMISE NATURAL LIGHTING WITHIN UNITS WITH A STAGGERED RHYTHM TO PROVIDE INTEREST AND SEPARATION FROM HOTEL FACADE.
- PROPOSED APARTMENT BLOCK TO BE FACED WITH IN TERRACOTTA CLADDING SYSTEM AND CEDAR BOARDING

CEDAR BOARDING RETURNED TO SIDE AND REAR OF RESIDENTIAL APARTMENTS.



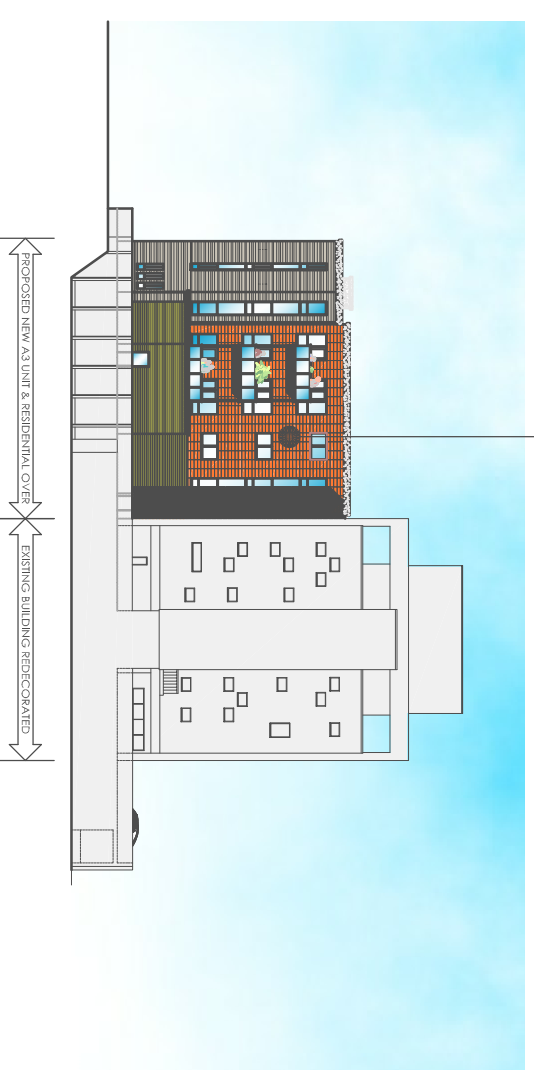
WEST ELEVATION

STATION ROAD - EAST ELEVATION



- EXISTING CAR PARKING FOR RESIDENTIAL APARTMENT AND HOTEL GUESTS
- VERTICAL AND HORIZONTAL LINES OF EXISTING BUILDING CONTINUED WITH THE INCLUSION OF VERTICALLY STACKING TERRACOTTA TILES

TERRACOTTA CLADDING SYSTEM AND CEDAR BOARDING CONTINUED TO REAR OF APARTMENT BLOCK.



SOUTH ELEVATION