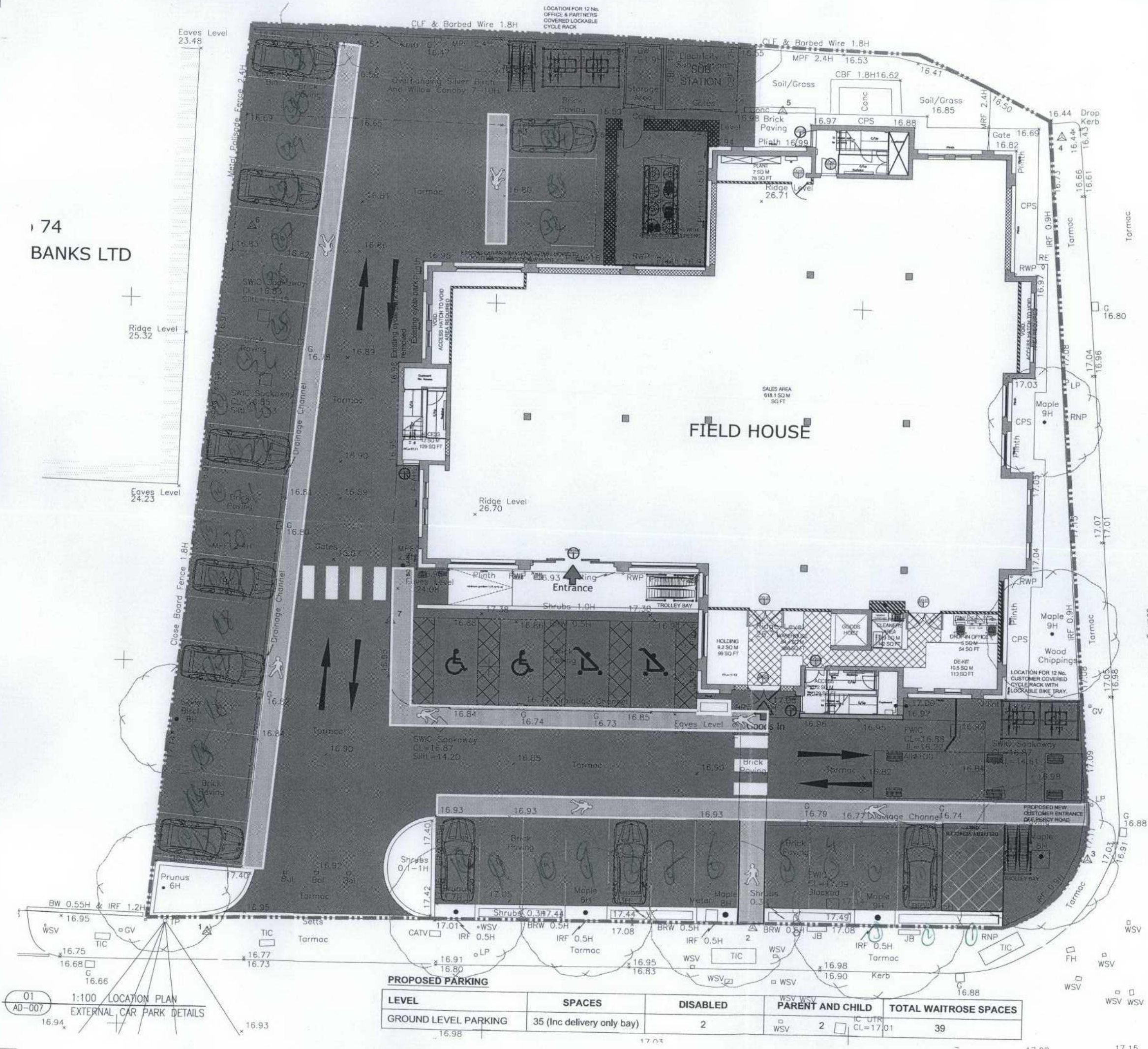
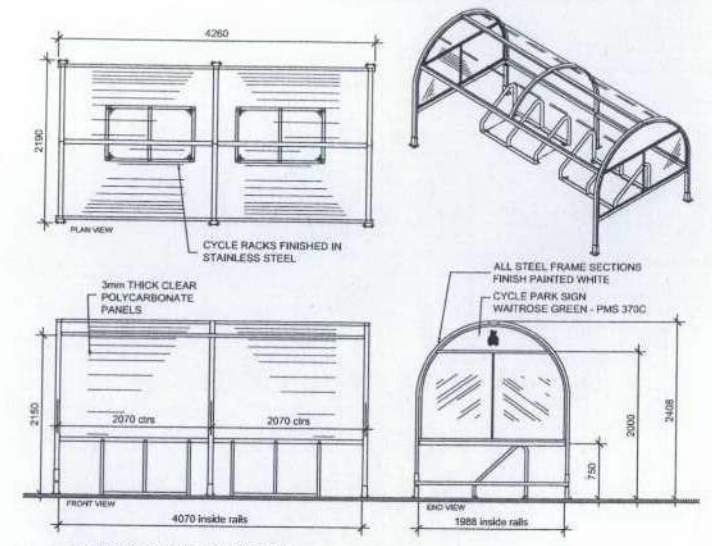


174  
BANKS LTD



**NOTES** ORIGINAL AT  
DO NOT SCALE FROM THIS DRAWING. ALL DIMENSIONS TO BE CHECKED ON SITE. COPYRIGHT PROTECTED.

TO BE READ IN CONJUNCTION WITH THE FOLLOWING DRAWINGS / DOCUMENTS:  
Customer Journey Analysis

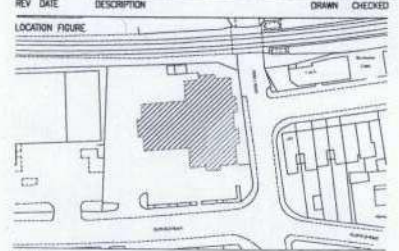


02 1:50 'NUTEK' DETAILS  
AD-007 PROPOSED 'NUTEK' CYCLE SHELTER  
12 SPACE COVERED BAY



03 NTS CYCLE SHELTER  
AD-007 PROPOSED 'NUTEK' CYCLE SHELTER

REV	DATE	DESCRIPTION	DRAWN	CHECKED
06	19.07.11	BOLLARD POSITION ALTERED	PO	JFM
05	21.06.11	BOLLARD NOTE ADDED	PO	JFM
04	21.06.11	BOLLARD POSITION ALTERED	PO	JFM
03	21.06.11	ADDITIONAL NOTES ADDED TO DRAWING FURTHER TO COMMENTS FROM TRANSPORT PLANNER	PO	JFM
02	13.06.11	ADDITIONAL NOTES ADDED TO DRAWING FURTHER TO MEETING WITH DEVELOPER	PO	JFM
01	10.06.11	CAR PARKING SPACES ALTERED TO REFLECT COMMENTS FROM GLANMILLS	PO	JFM



CLIENT **Waitrose**

PROJECT  
**WAITROSE HAMPTON LARGE CONVENIENCE**  
DRAWING  
**CAR PARK LAYOUT**

CONSULTANT No <b>G3801</b>	SCALE <b>1:100</b>	DATE <b>08.06.11</b>	DRAWN <b>JFM</b>	CHECKED <b>JFM</b>
PROJECT No <b>A</b>	DISCIPLINE <b>A</b>	DRAWING No <b>AD-007</b>	STATUS <b>I</b>	REV <b>06</b>

01 1:100 LOCATION PLAN  
AD-007 EXTERNAL CAR PARK DETAILS

LEVEL	SPACES	DISABLED	PARENT AND CHILD	TOTAL WAITROSE SPACES
GROUND LEVEL PARKING	35 (Inc delivery only bay)	2	2	39