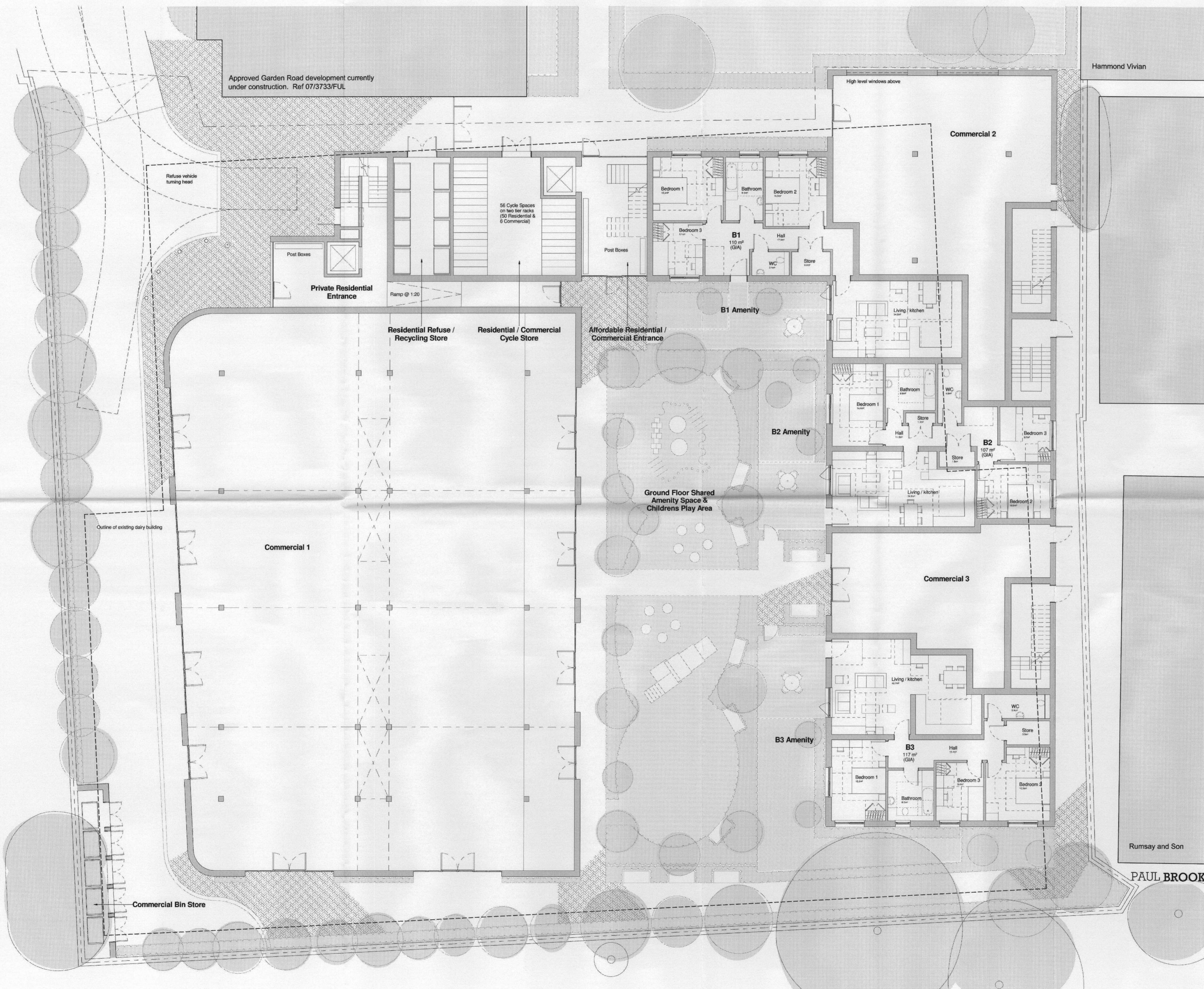
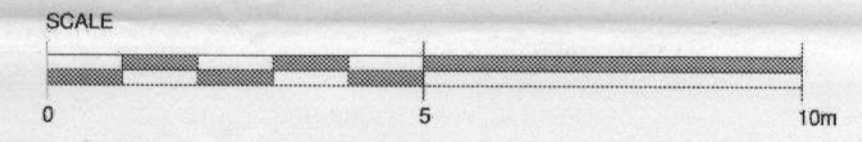


Do not scale from this drawing



11 5382 / FUL



# PLANNING

Rev	Description	Issued	Den	Chk

Client  
Harepath LLP

Project  
Proposed Mixed Use Development, Express Dairies Site, Richmond

Drawing  
Proposed Site and Ground Floor Plan

Scale  
1 : 100@A1

Date  
Aug '11

Drawn  
TL / SC

Checked  
MB

Rumsay and Son

**PAUL BROOKES ARCHITECTS**  
The Works 28 Barnes Avenue London SW13 9AB

T 020 8563 0181  
F 020 8563 0763  
E pb@pbworks.co.uk