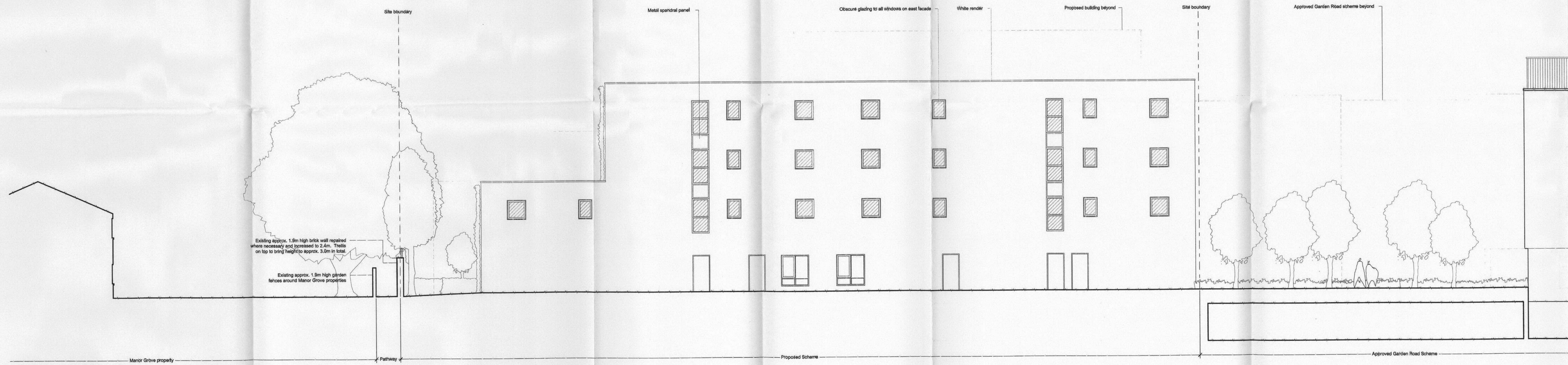
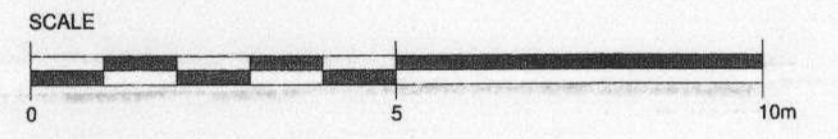


11/3382/FUL



- 04 - Fourth (63.035)
- 03 - Third (59.985)
- 02 - Second (56.935)
- 01 - First (53.885)
- 00 - Ground (50.835)
- 1 - Basement (47.785)



PLANNING

Rev	Description	Issued	Drawn	CHK

Client
Harepath LLP

Project
Proposed Mixed Use Development, Express Dairies Site, Richmond

Drawing
Proposed East Elevation

Scale: 1 : 100@A1+ Aug '11
Drawn: TL / SC
Checked: MB

PAUL BROOKES ARCHITECTS
The Works 28 Barnes Avenue London SW13 9AB
T 020 8563 0181
F 020 8563 0753
E pb@pbworks.co.uk

Drawing No. 4030 | D | [] 72