

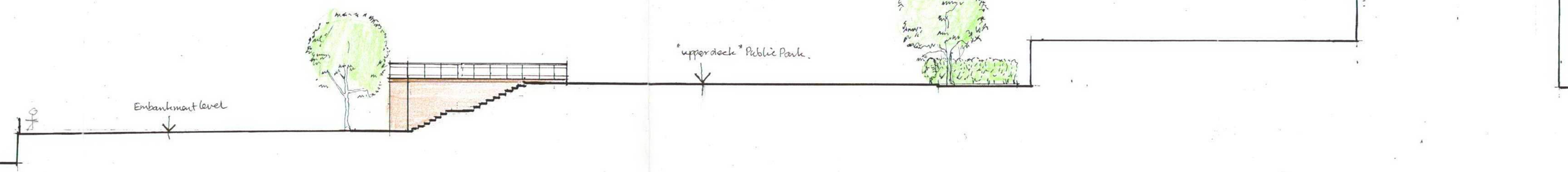
01/0540/
FUL

LONDON BOROUGH OF
RICHMOND UPON THAMES
27 MAR 2001
BY [signature]

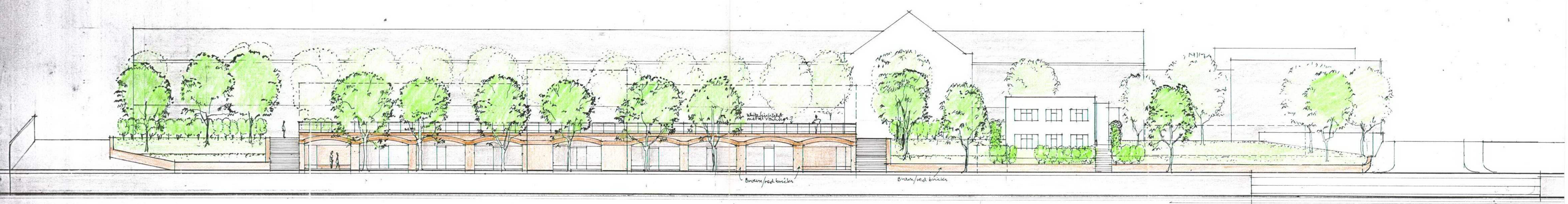


SOUTH WEST ELEVATION

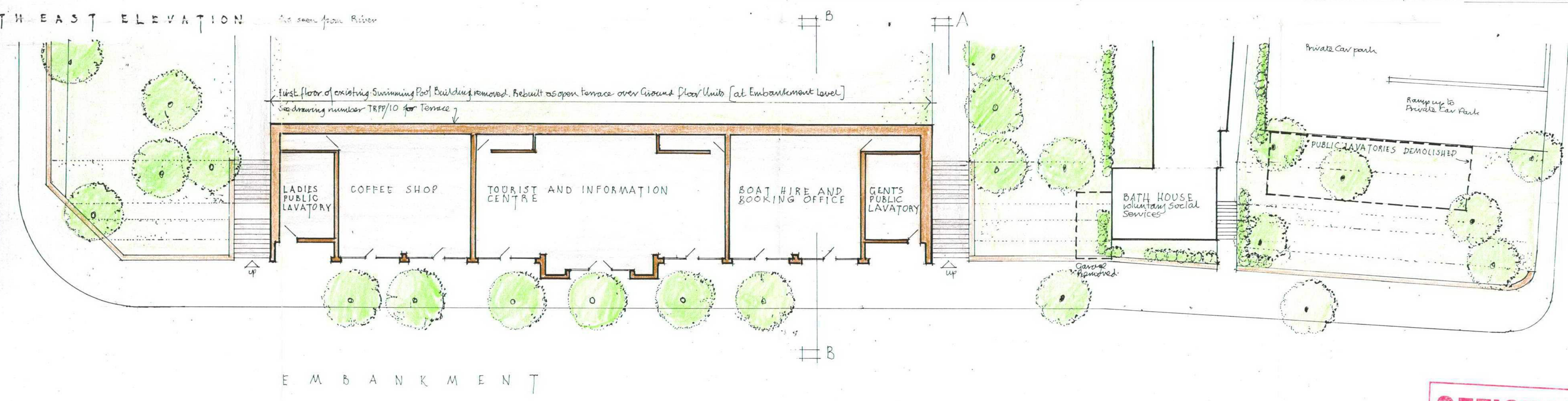
SECTION BB



NORTH EAST ELEVATION AND SECTION A.A.



SOUTH EAST ELEVATION
As seen from River



PLAN

EMBANKMENT

RIVER THAMES.

TWICKENHAM

RIVERSIDE PUBLIC PARK

OFFICE COPY
DO NOT REMOVE FROM FILE

03/1141/FUL

DRAWING NUMBER TRPP/9
DATE 19th March 2001
SCALE 1/200