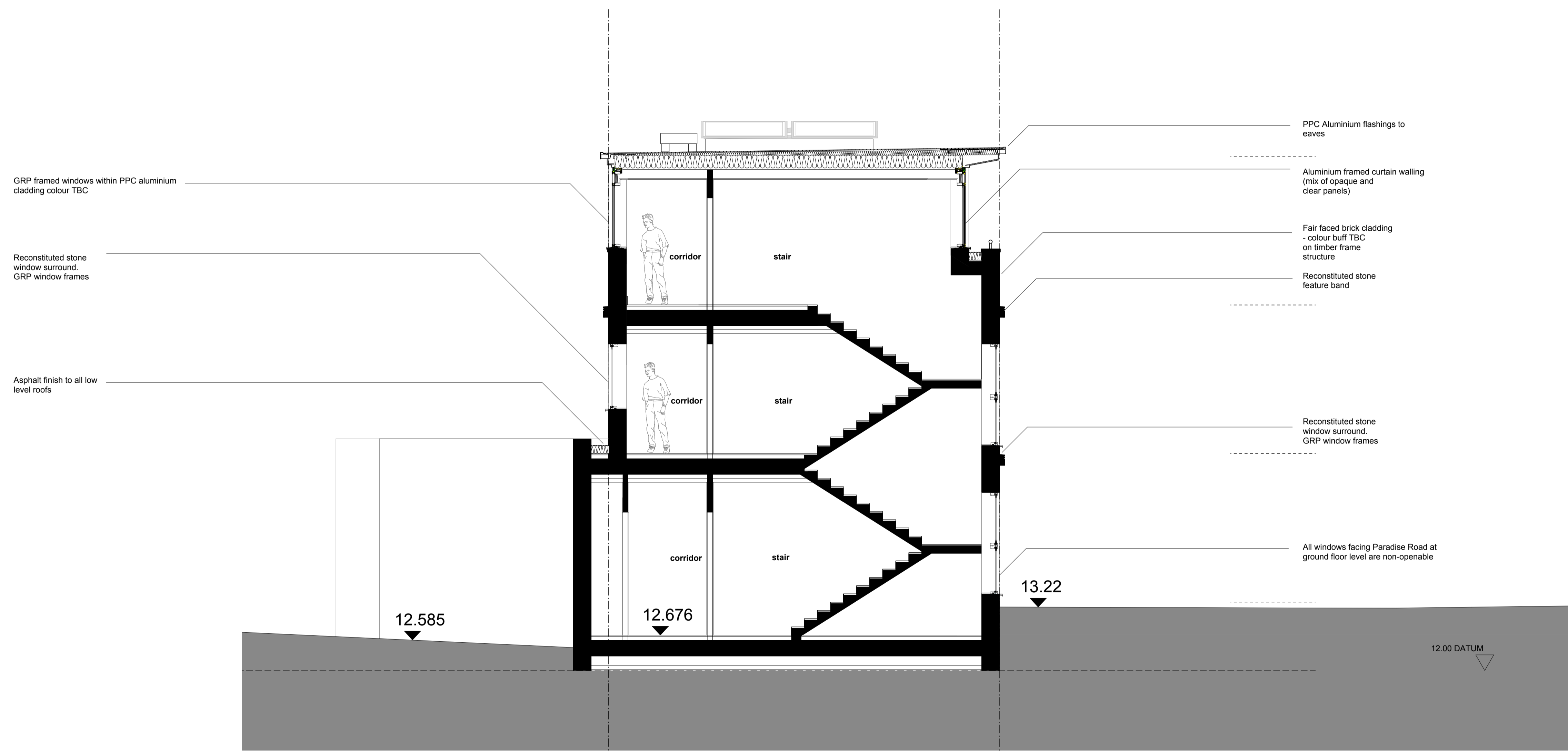
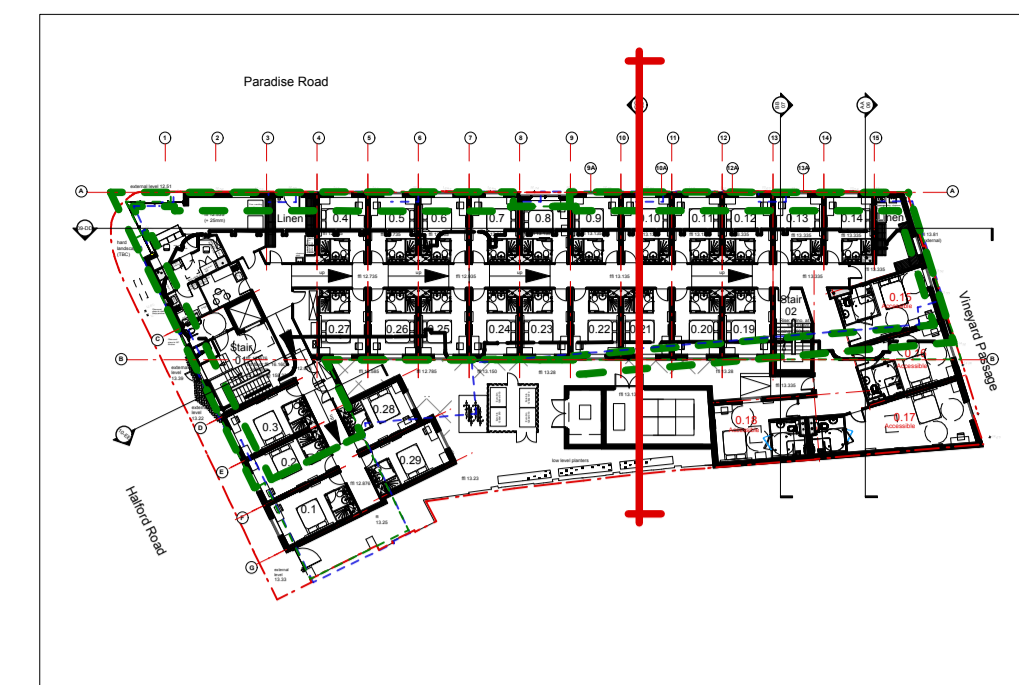


Notes:  
 Do not scale dimensions from this drawing.  
 Dimensions marked with an asterisk (\*) are open site  
 dimensions to be confirmed on site.  
 All given dimensions are to be checked on site when  
 setting out and any discrepancy reported immediately.



GRP framed windows within PPC aluminium  
cladding colour TBC

Reconstituted stone  
window surround.  
GRP window frames

Asphalt finish to all low  
level roofs

PPC Aluminium flashings to  
eaves

Aluminium framed curtain walling  
(mix of opaque and  
clear panels)

Fair faced brick cladding  
- colour buff TBC  
on timber frame  
structure

Reconstituted stone  
feature band

Reconstituted stone  
window surround.  
GRP window frames

All windows facing Paradise Road at  
ground floor level are non-openable

12.585

12.676

13.22

12.00 DATUM

○ Proposed Section CC

Rev	Date	Notes	By	Chkd
-----	------	-------	----	------

Project:  
9-19 Paradise Road, Richmond

Client:  
Henry Boot Ltd

Drawing title:  
Proposed Section EE  
Through Stair

Ref: -p03 Sheet:

Date: 19.03.2012 Scale: 1:50 @ A1

Drawn by: ods Checked by: pbp

Drawing no.: 0779-02-110 Revision:

bpr architects

The Boathouse, Embankment  
Putney, London, SW15 1LB  
t +44(0)20 8785 9983  
f +44(0)20 8780 1507  
e info@bprarchitects.com  
www.bprarchitects.com