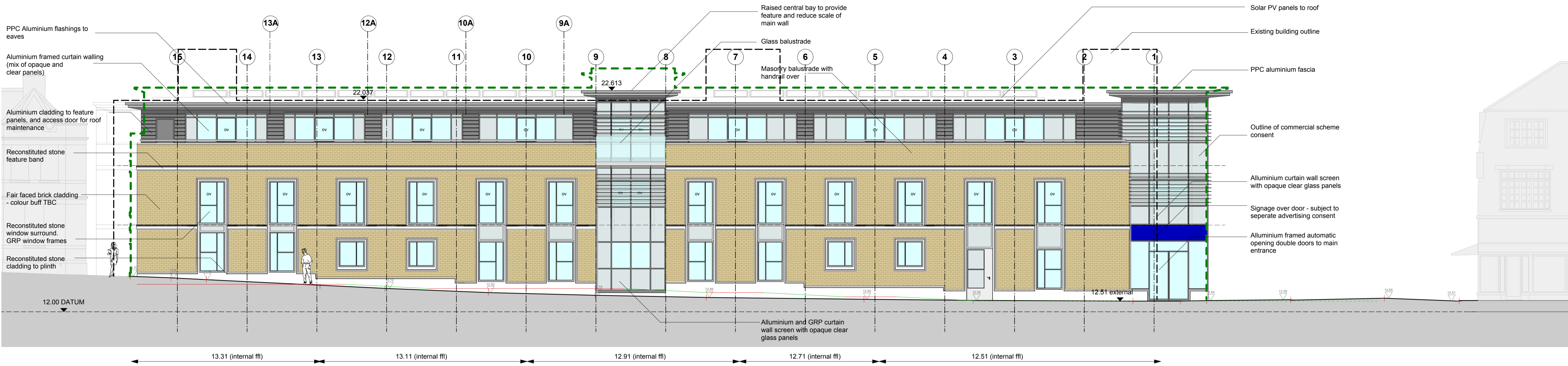


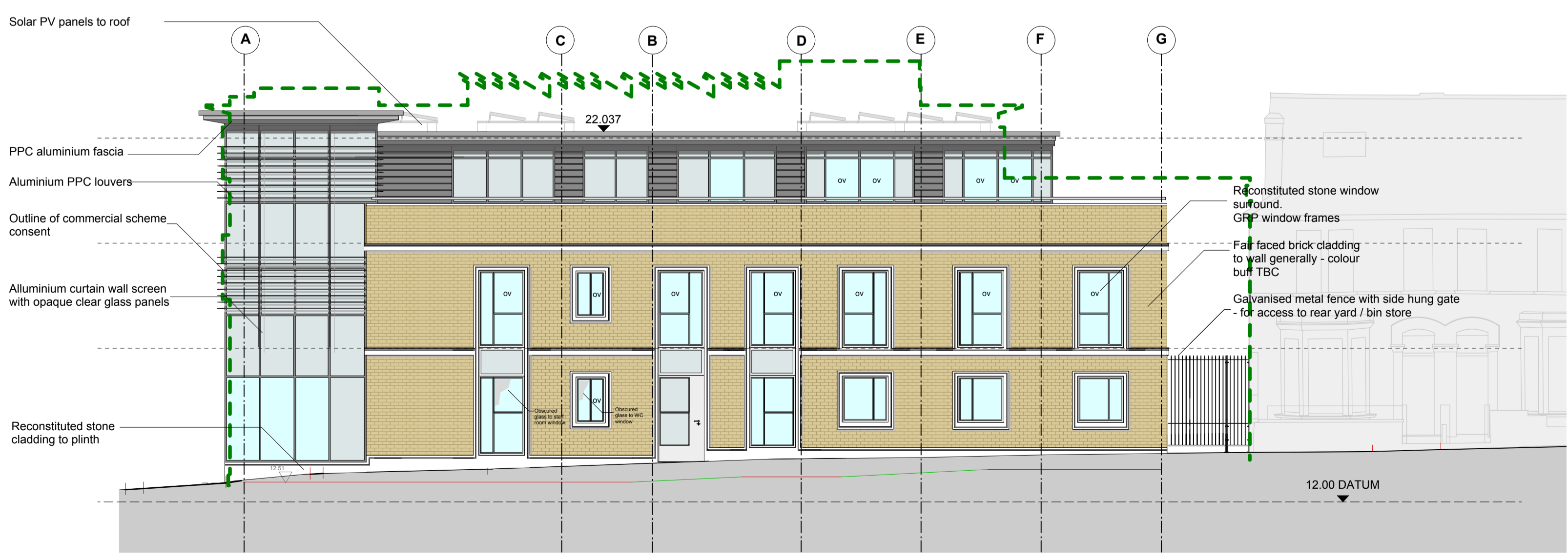
Notes:
 Do not scale dimensions from this drawing.
 Dimensions marked with an asterisk * are open site dimensions to be confirmed on site.
 All given dimensions are to be checked on site when setting out and any discrepancy reported immediately.



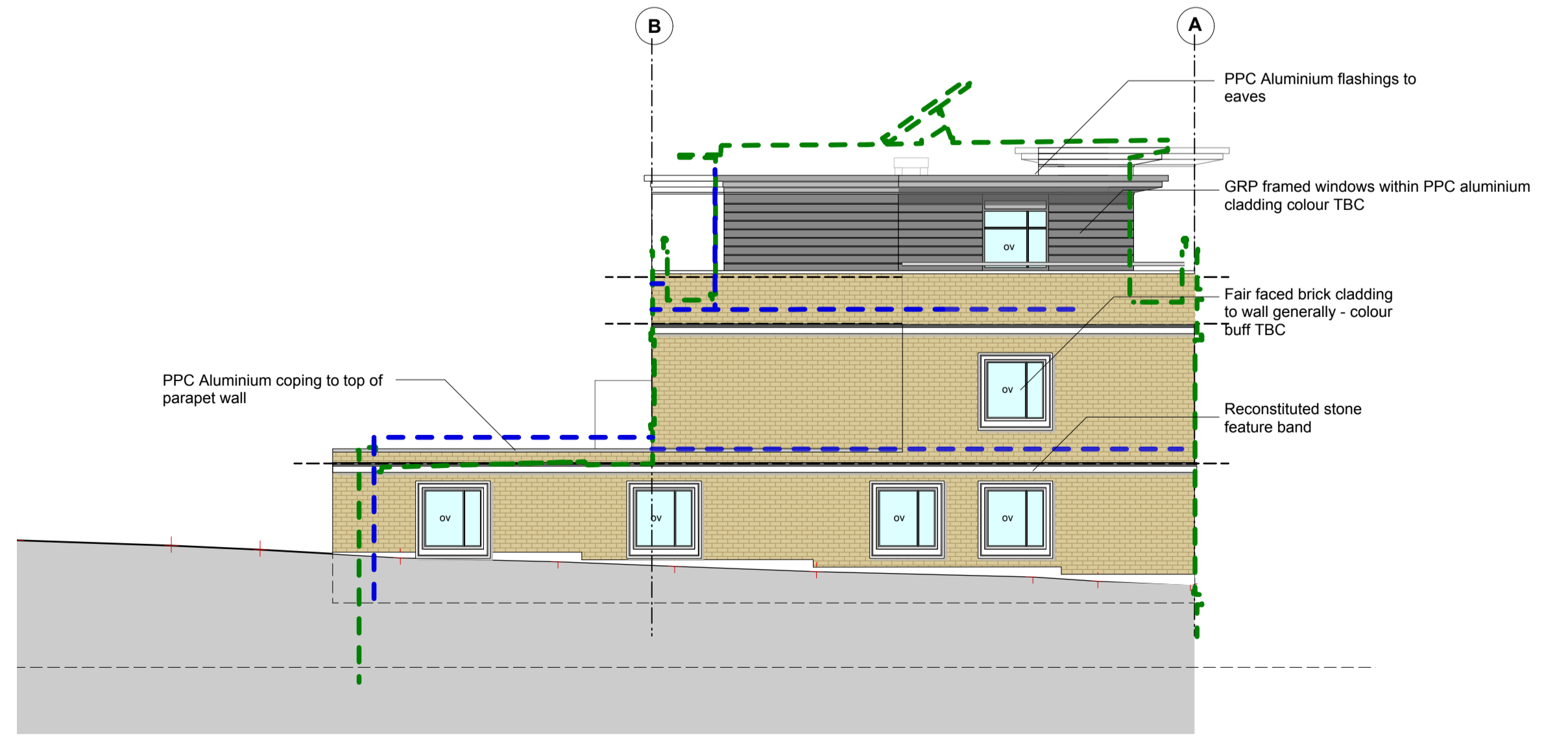
Paradise Road Elevation



Rear Elevation



Halford Road Elevation



Vineyard Passage Elevation

C	9/5/12	Louvers revised	ods	pbp
B	4/5/12	Curtain wall revised	ods	pbp
A	18/4/12	Revised in line with TL comments	ods	pbp
Rev	Date	Notes	By	Chkd

Project:
 9-19 Paradise Road, Richmond

Client:
 Henry Boot Ltd

Drawing title:
 Proposed Elevations

Ref: -p03 Sheet:

Date: 19/03/2012 Scale: 1:100 @ A1

Drawn by: ods Checked by: pbp

Drawing no.: 0779-02-111 C Revision: