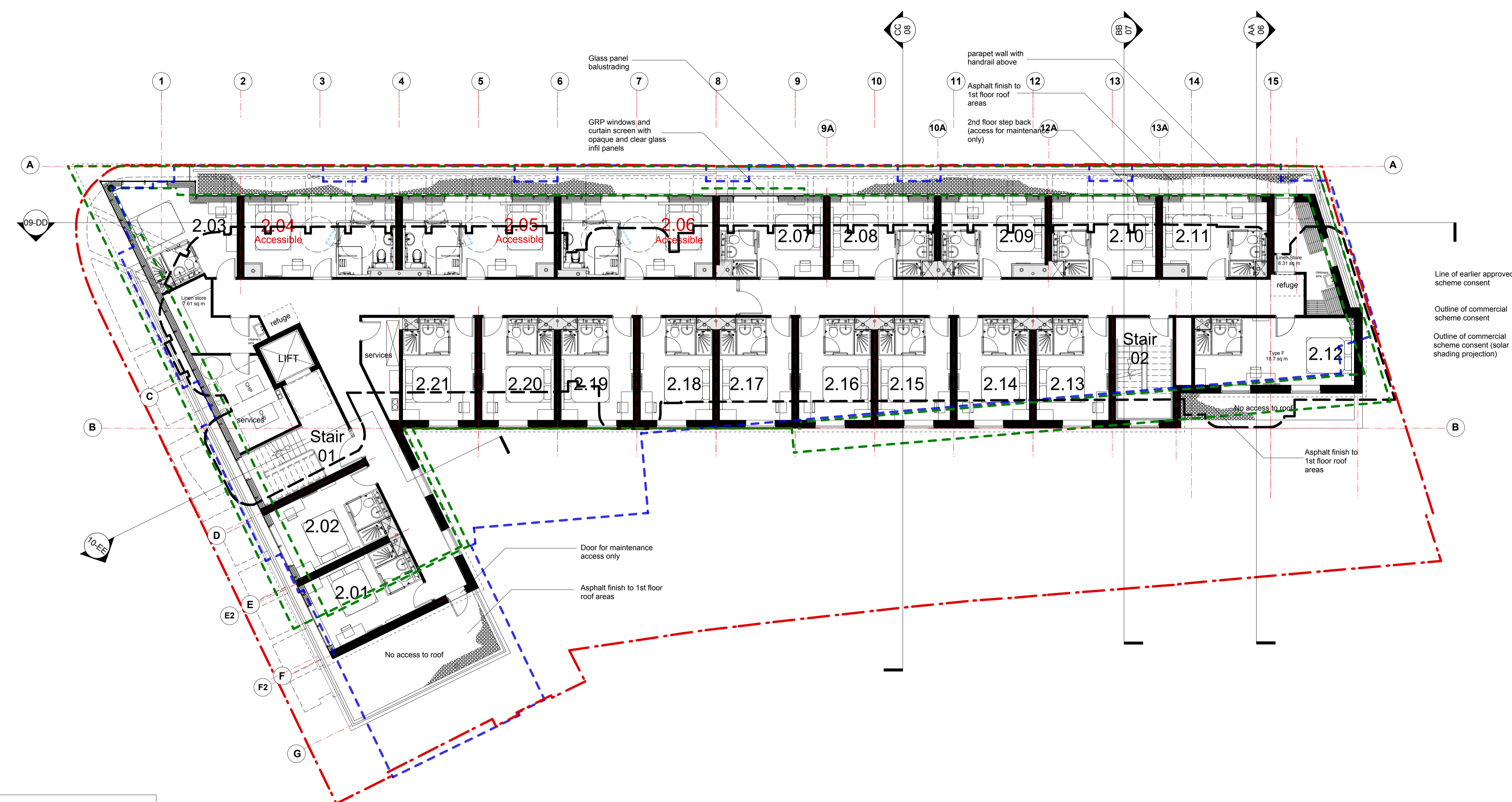


Notes:  
 Do not scale dimensions from this drawing  
 Dimensions marked with an asterisk \* are open site dimensions to be confirmed on site.  
 All given dimensions are to be checked on site when setting out and any discrepancy reported immediately.

**003-05 Hazard Notes**

Please be aware of the following Hazards have been identified in relation to the works shown on this drawing

ID	Hazard	Action
1	Cladding installation	Reduce large elements for work at height
2	Glazing	Provide safe working platform for working at height
3	Roof works	provide barriers for working close to edge
4	Access to roof	provide safe access to roof
5	Roof finish vulnerable to damage during works	protect roof finish at all times
6	Low level roofs vulnerable	Specified as asphalt to avoid cigarette burns



**Key to boundaries**

<span style="color: red;">- - -</span>	Site Boundary
<span style="color: grey;">- - -</span>	Outline of existing building to be demolished
<span style="color: blue;">- - -</span>	Outline of earlier commercial consent. Planning ref AM/JLH0132
<span style="color: green;">- - -</span>	Outline of commercial consent Planning ref 09/1400/FUL

Line of earlier approved scheme consent  
 Outline of commercial scheme consent  
 Outline of commercial scheme consent (solar shading projection)

Rev	Date	Notes	By	Chkd
C	11/6/12	Revised in line with TL comments	ods	pbp
B	4/5/12	Room 2.03 curtain wall revised Section EE reference added	ods	spc
A	16/4/12	Revised in line with TL comments	ods	spc

Project:  
 9-19 Paradise Road, Richmond

Client:  
 Henry Boot Ltd

Drawing title:  
 Proposed New Hotel  
 Second Floor Plan

Ref: -p03 Sheet:

Date: 19.03.2012 Scale: 1:100 @ A1

Drawn by: ods Checked by: pbp

Drawing no.: 0779-02-104 Revision: C

○ Second Floor Plan