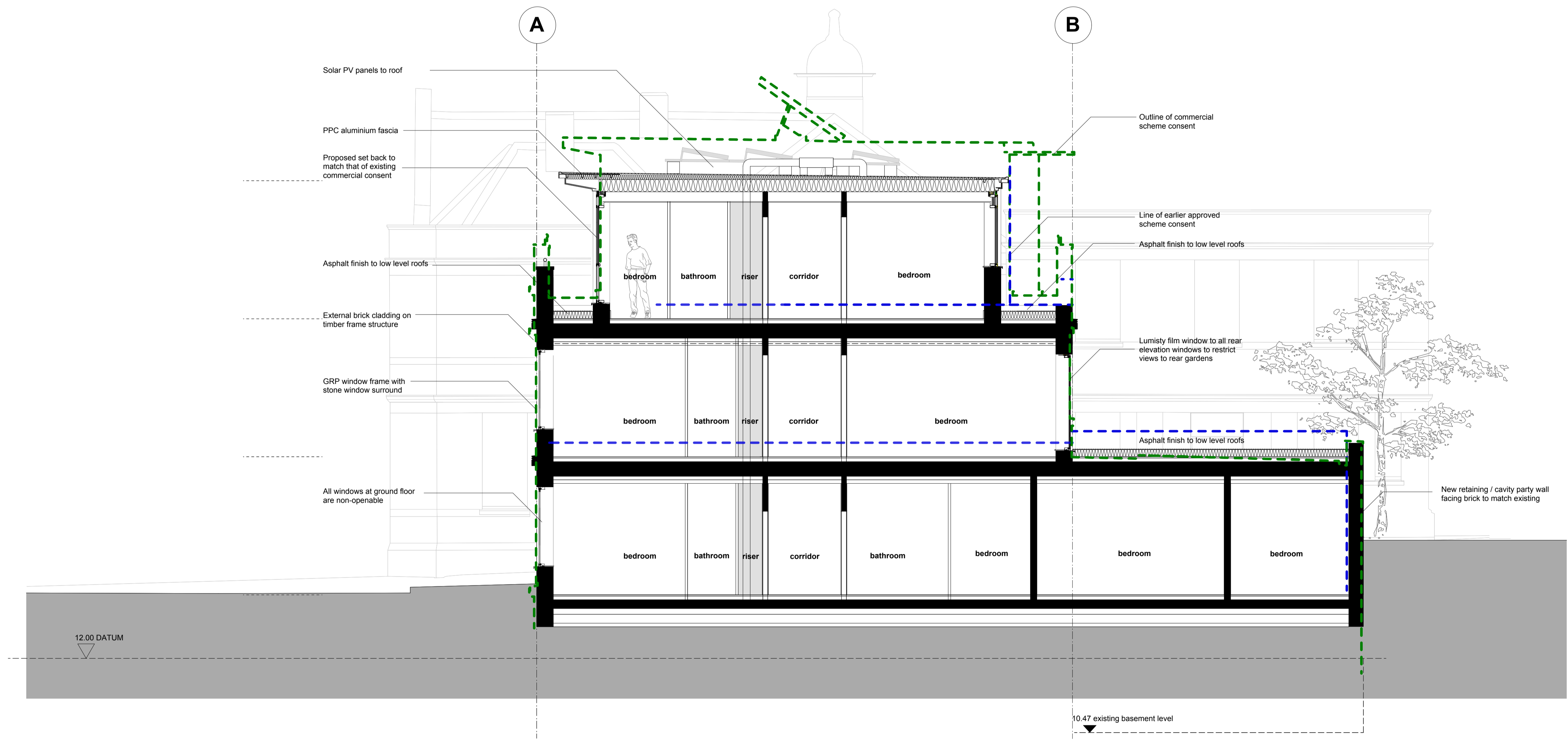


Notes:
 Do not scale dimensions from this drawing.
 Dimensions marked with an asterisk (*) are open site dimensions to be confirmed on site.
 All given dimensions are to be checked on site when setting out and any discrepancy reported immediately.



12.00 DATUM

10.47 existing basement level

Proposed Section AA

Rev	Date	Notes	By	Chkd
A	11/6/12	Revised in line Planners comments	ods	spc

Project:
 9-19 Paradise Road, Richmond

Client:
 Henry Boot Ltd

Drawing title:
 Proposed Section AA

Ref:
 -p03

Date:
 19.03.12

Scale:
 1:50 @ A1

Drawn by:
 ods

Checked by:
 pbp

Drawing no.:
 0779-02-106

Revision:
 A