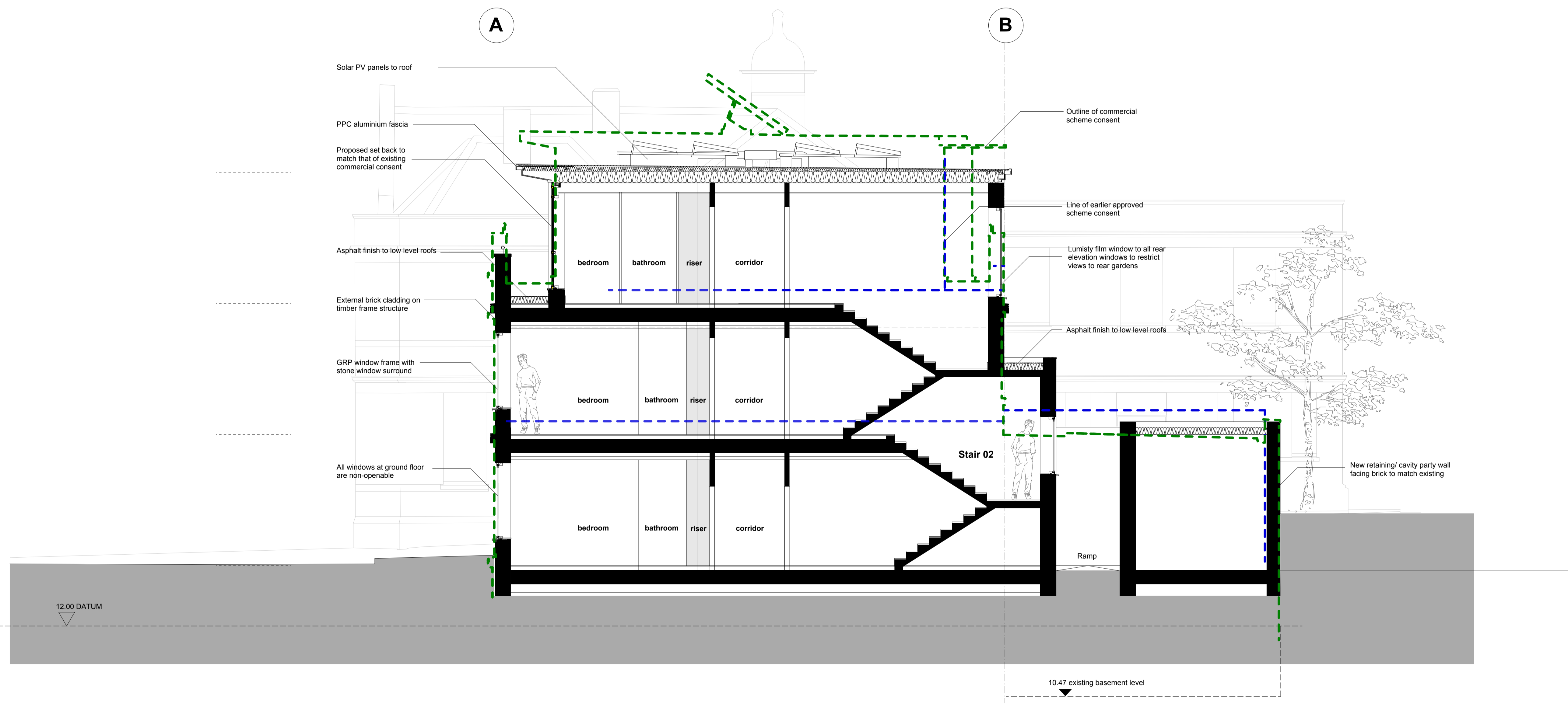
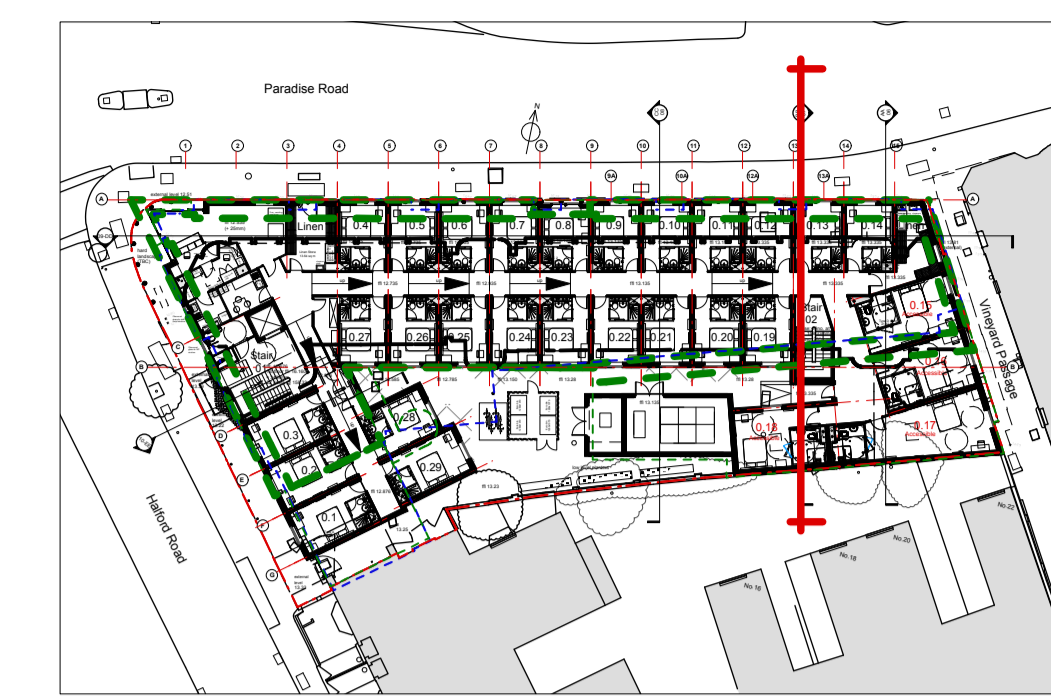


Notes:
 Do not scale dimensions from this drawing.
 Dimensions marked with an asterisk (*) are open site dimensions to be confirmed on site.
 All given dimensions are to be checked on site when setting out and any discrepancy reported immediately.



Proposed Section AA

Rev	Date	Notes	By	Chkd
A	11/6/12	Revised in line Planners comments	ods	spc

Project:
 9-19 Paradise Road, Richmond

Client:
 Henry Boot Ltd

Drawing title:
 Proposed Section BB

Ref:
 -p03

Date:
 19.03.2012

Scale:
 1:50 @ A1

Drawn by:
 ods

Checked by:
 pbp

Drawing no.:
 0779-02-107

Revision:
 A

bpr architects

The Boathouse, Embankment
 Putney, London, SW15 1LB
 t +44(0)20 8785 9983
 f +44(0)20 8780 1507
 e info@bprarchitects.com
 www.bprarchitects.com