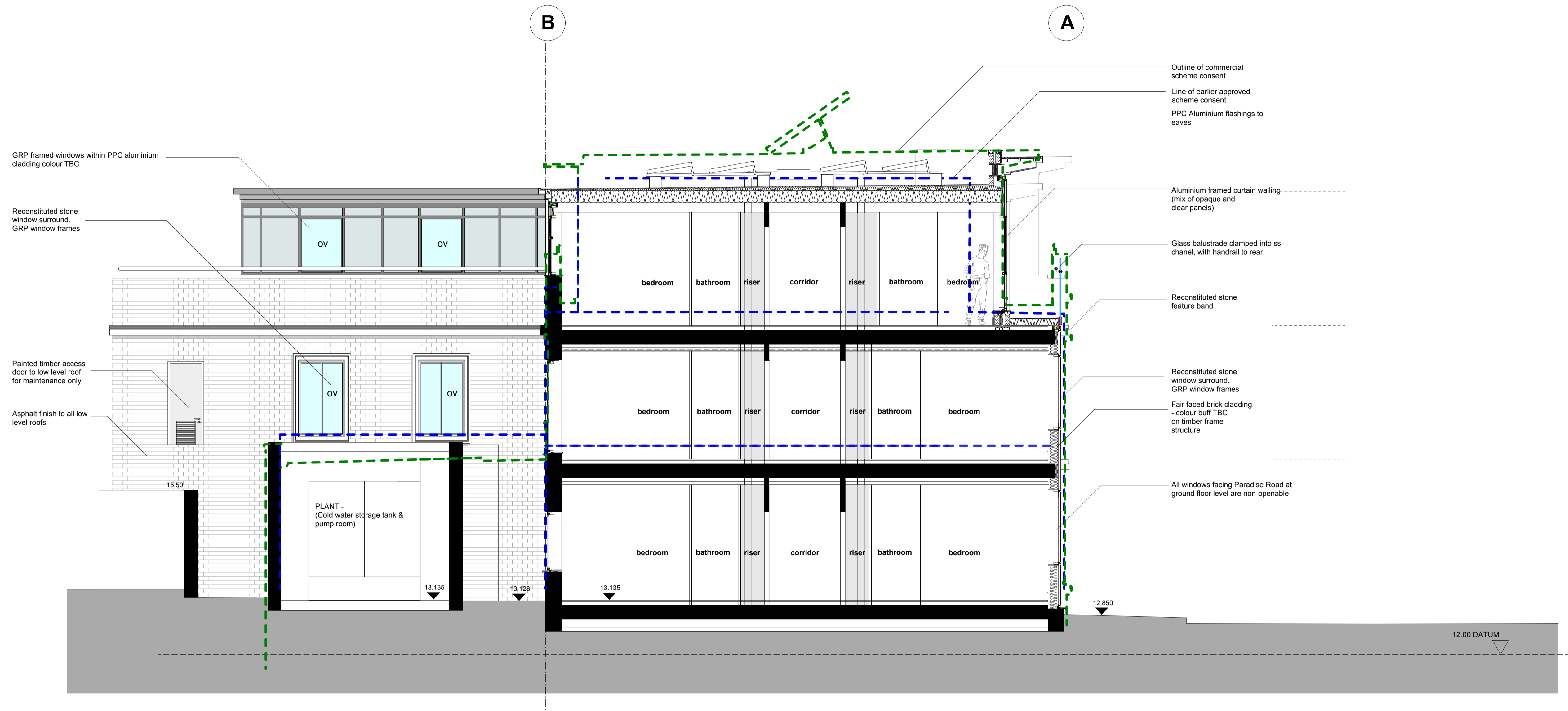


Notes:
 Do not scale dimensions from this drawing.
 Dimensions marked with an asterisk (*) are open site dimensions to be confirmed on site.
 All given dimensions are to be checked on site when setting out and any discrepancy reported immediately.



GRP framed windows within PPC aluminium cladding colour TBC

Reconstituted stone window surround. GRP window frames

Painted timber access door to low level roof for maintenance only

Asphalt finish to all low level roofs

15.50

PLANT - (Cold water storage tank & pump room)

13.135

13.128

13.135

12.950

12.00 DATUM

Outline of commercial scheme consent
 Line of earlier approved scheme consent
 PPC Aluminium flashings to eaves

Aluminium framed curtain walling (mix of opaque and clear panels)

Glass balustrade clamped into ss channel, with handrail to rear

Reconstituted stone feature band

Reconstituted stone window surround. GRP window frames

Fair faced brick cladding - colour buff TBC on timber frame structure

All windows facing Paradise Road at ground floor level are non-operable

Proposed Section CC

Rev	Date	Notes	By	Chkd
A	11/6/12	Revised in line Planners comments	ods	spc

Project:
 9-19 Paradise Road, Richmond

Client:
 Henry Boot Ltd

Drawing title:
 Proposed Section CC
 Through Water Tank Room

Ref: -p03 Sheet:

Date: 19.03.12 Scale: 1:50 @ A1

Drawn by: ods Checked by: pbp

Drawing no.: 0779-02-108 Revision: A

bpr architects

The Boathouse, Embankment
 Putney, London, SW15 1LB
 t +44(0)20 8785 9983
 f +44(0)20 8780 1507
 e info@bprarchitects.com
 www.bprarchitects.com