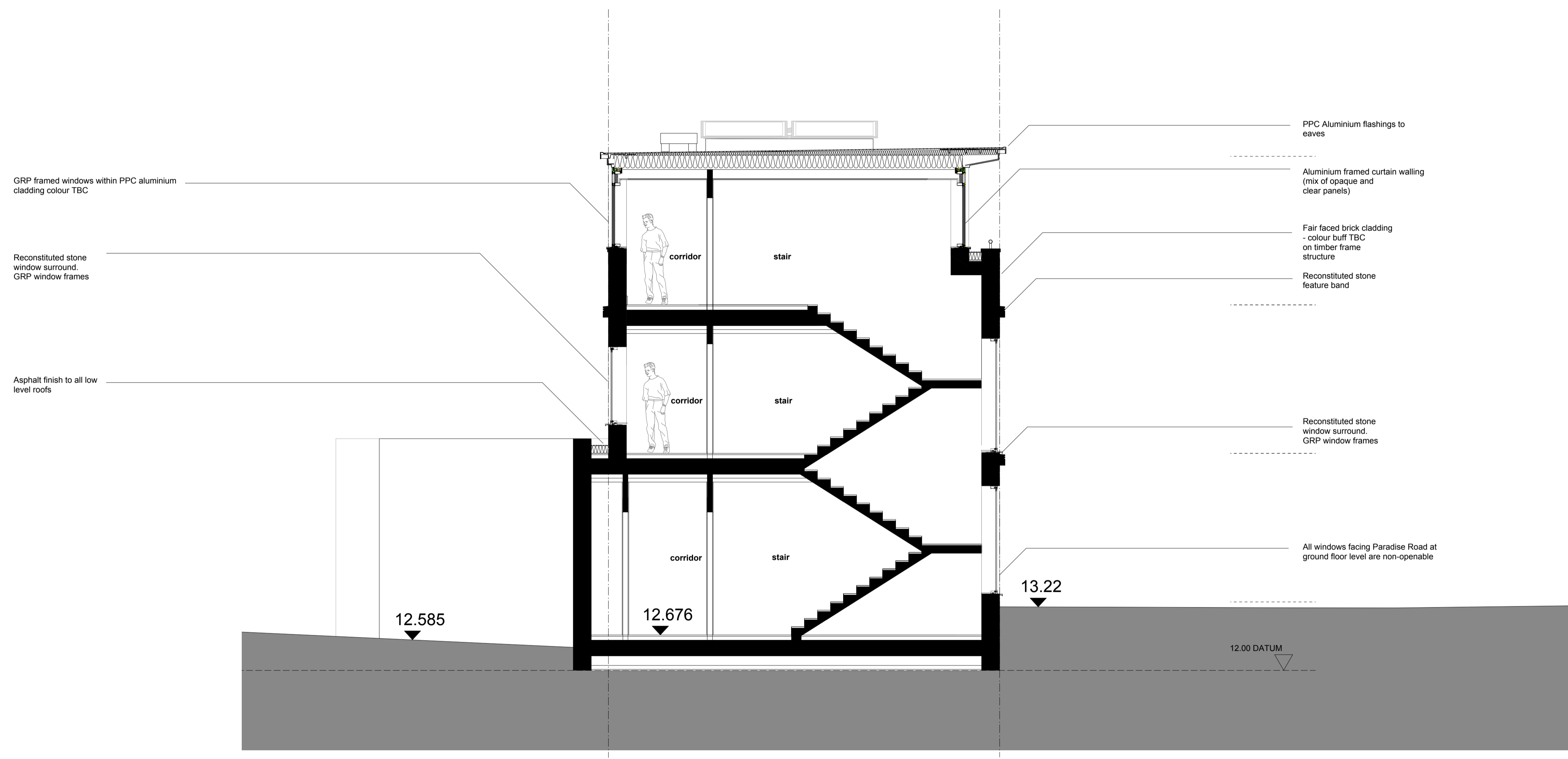
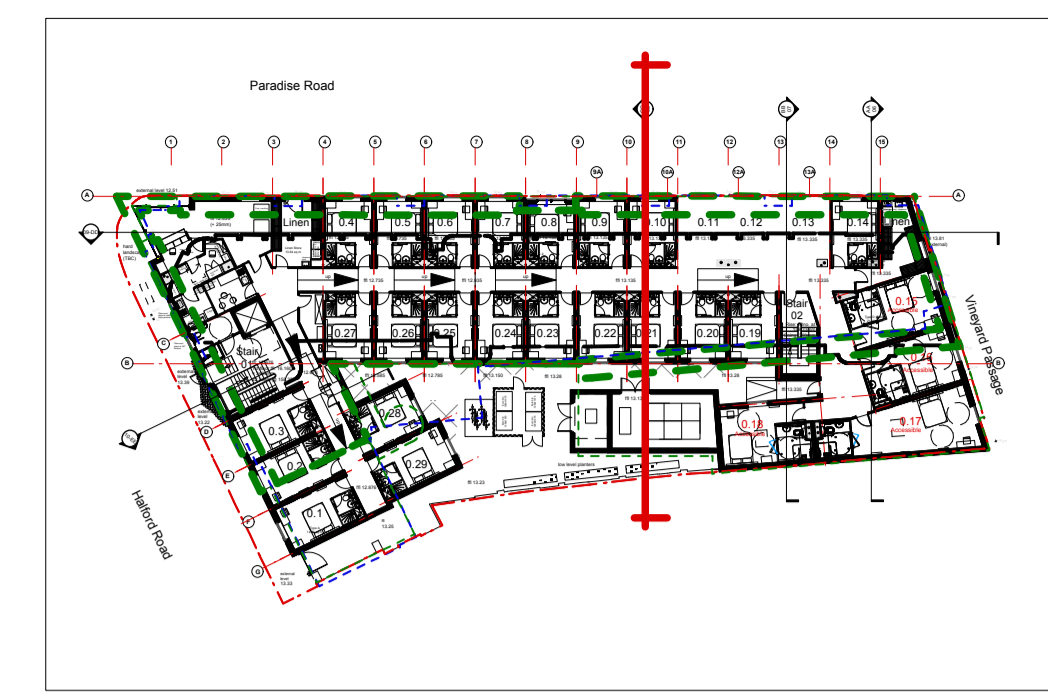


Notes:
 Do not scale dimensions from this drawing.
 Dimensions marked with an asterisk (*) are open site
 dimensions to be confirmed on site.
 All given dimensions are to be checked on site when
 setting out and any discrepancy reported immediately.



Rev	Date	Notes	By	Chkd
A	11/6/12	Revised in line Planners comments	ods	pbp

Project:
 9-19 Paradise Road, Richmond

Client:
 Henry Boot Ltd

Drawing title:
 Proposed Section EE
 Through Stair

Ref: -p03 Sheet:

Date: 19.03.2012 Scale: 1:50 @ A1

Drawn by: ods Checked by: pbp

Drawing no.: 0779-02-110 Revision: A

○ Proposed Section CC