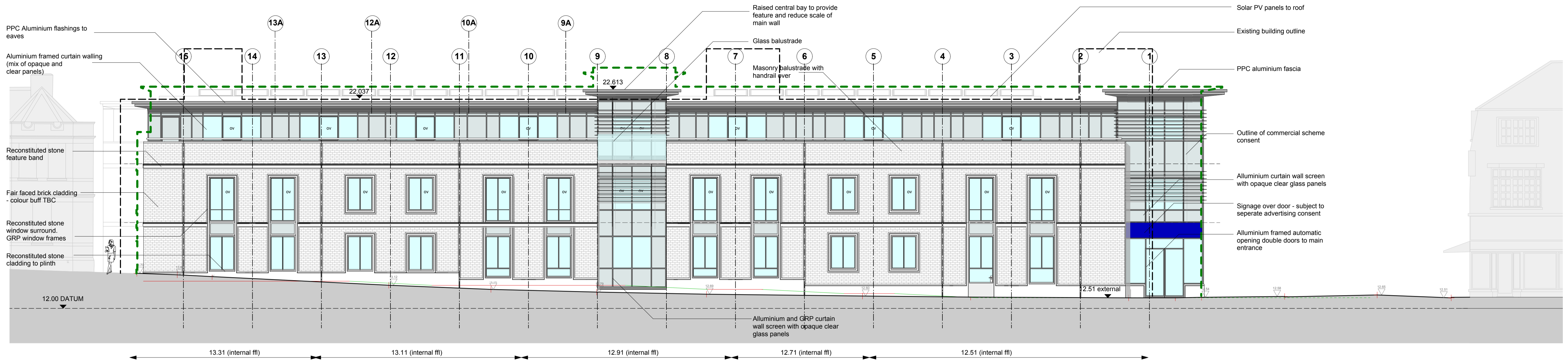


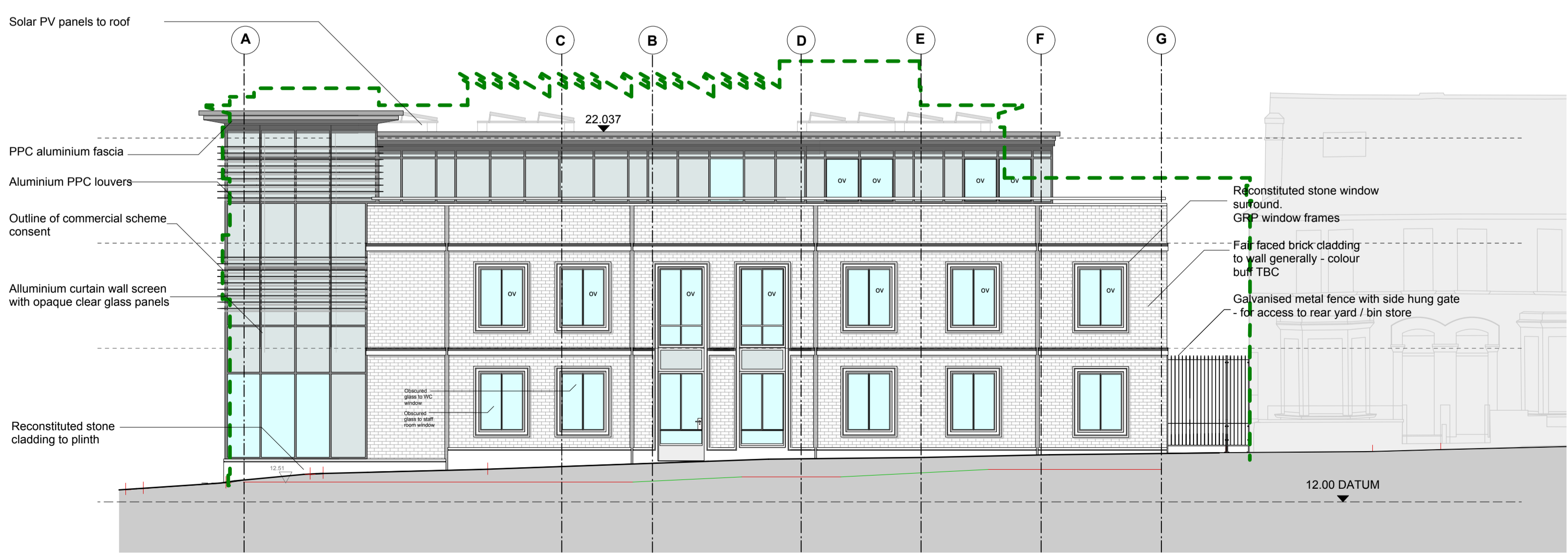
Notes:
 Do not scale dimensions from this drawing.
 Dimensions marked with an asterisk (*) are open site
 dimensions to be confirmed on site.
 All given dimensions are to be checked on site when
 setting out and any discrepancy reported immediately.



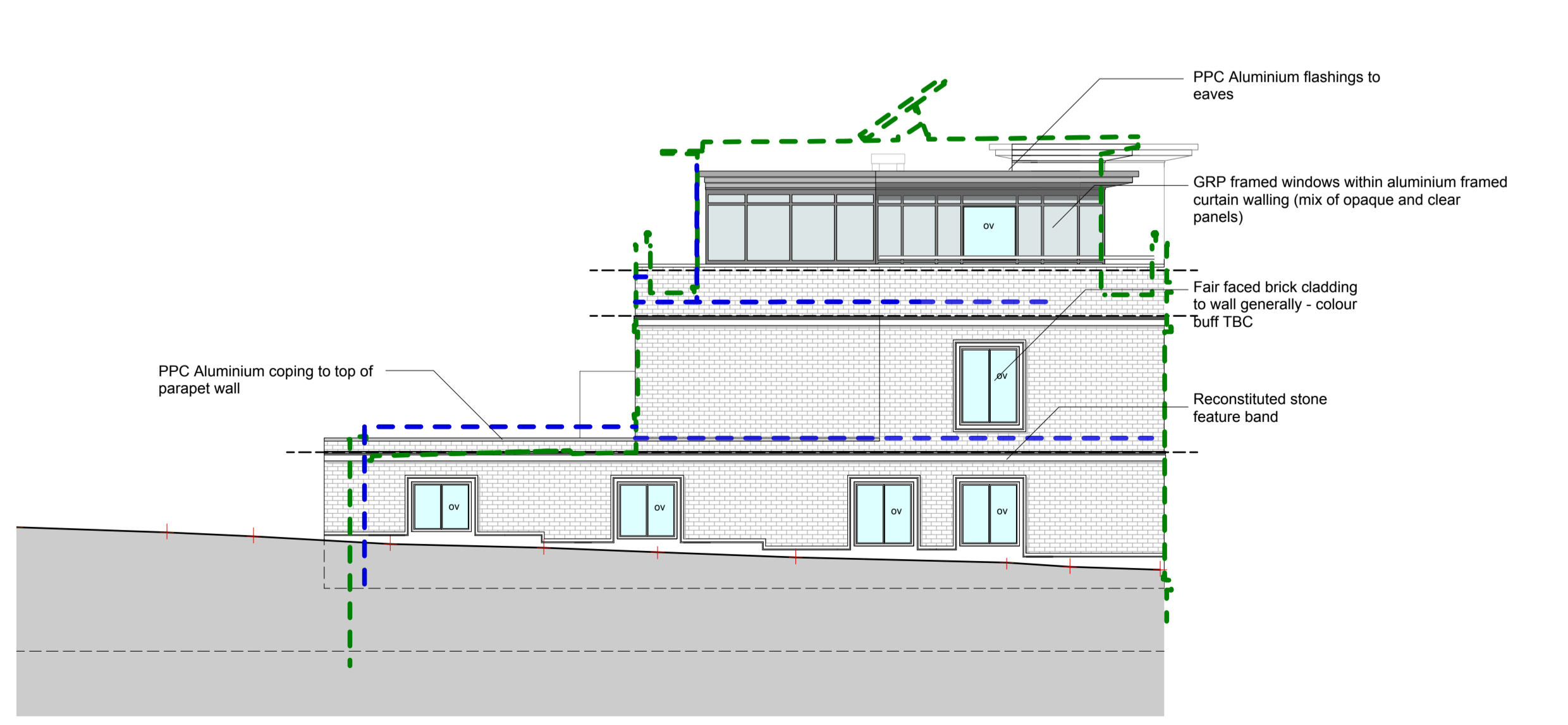
Paradise Road Elevation



Rear Elevation



Halford Road Elevation



Vineyard Passage Elevation

G	14/6/12	Vertical shadow gaps added to Halford and Paradise Road elevations	ods	pbp
F	14/6/12	Aluminium cladding note amended Paradise Road plinth revised	ods	pbp
E	11/6/12	Halford Road plinth revised Rear elevation windows revised	ods	pbp
D	7/6/12	Revised in line Planners comments	ods	spc
C	9/5/12	Louvers revised	ods	pbp
B	4/5/12	Curtain wall revised	ods	pbp
A	18/4/12	Revised in line with TL comments	ods	pbp
Rev	Date	Notes	By	Chkd

Project:
 9-19 Paradise Road, Richmond

Client:
 Henry Boot Ltd

Drawing title:
 Proposed Elevations

Ref: -p03 Sheet:

Date: 19/03/2012 Scale: 1:100 @ A1

Drawn by: ods Checked by: pbp

Drawing no.: 0779-02-111 G Revision: