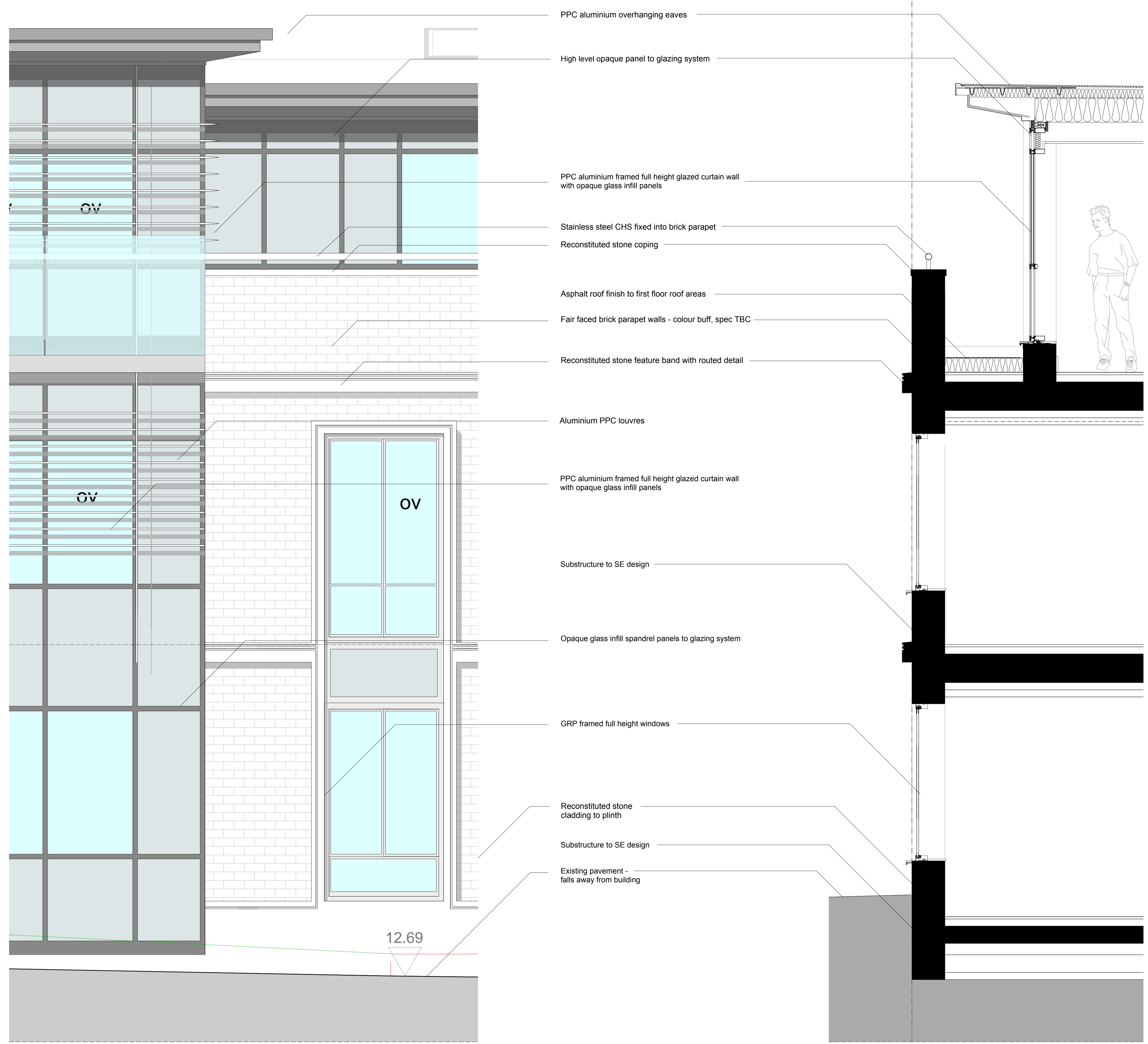


Notes:
 Do not scale dimensions from this drawing
 Dimensions marked with an asterisk (*) are open site
 dimensions to be confirmed on site.
 All given dimensions are to be checked on site when
 setting out and any discrepancy reported immediately.



PPC aluminium overhanging eaves

High level opaque panel to glazing system

PPC aluminium framed full height glazed curtain wall with opaque glass infill panels

Stainless steel CHS fixed into brick parapet

Reconstituted stone coping

Asphalt roof finish to first floor roof areas

Fair faced brick parapet walls - colour buff, spec TBC

Reconstituted stone feature band with routed detail

Aluminium PPC louvres

PPC aluminium framed full height glazed curtain wall with opaque glass infill panels

Substructure to SE design

Opaque glass infill spandrel panels to glazing system

GRP framed full height windows

Reconstituted stone cladding to plinth

Substructure to SE design

Existing pavement - falls away from building

12.69

B	11/6/12	Revised in line Planners comments	ods	pbp
A	9/5/12	Section amended Louvres revised	ods	pbp
Rev	Date	Notes	By	Chkd

Project:
 9-19 Paradise Road, Richmond

Client:
 Henry Boot Ltd

Drawing title:
 Typical Elevation Detail

Ref:
 -p03

Date:
 19.03.2012

Scale:
 1:20 @ A1

Drawn by:
 ods

Checked by:
 pbp

Drawing no.:
 0779-02-116

Revision:
 B

bpr architects
 The Boathouse, Embankment
 Putney, London, SW15 1LB
 t +44(0)20 8785 9983
 f +44(0)20 8780 1507
 e info@bprarchitects.com
 www.bprarchitects.com