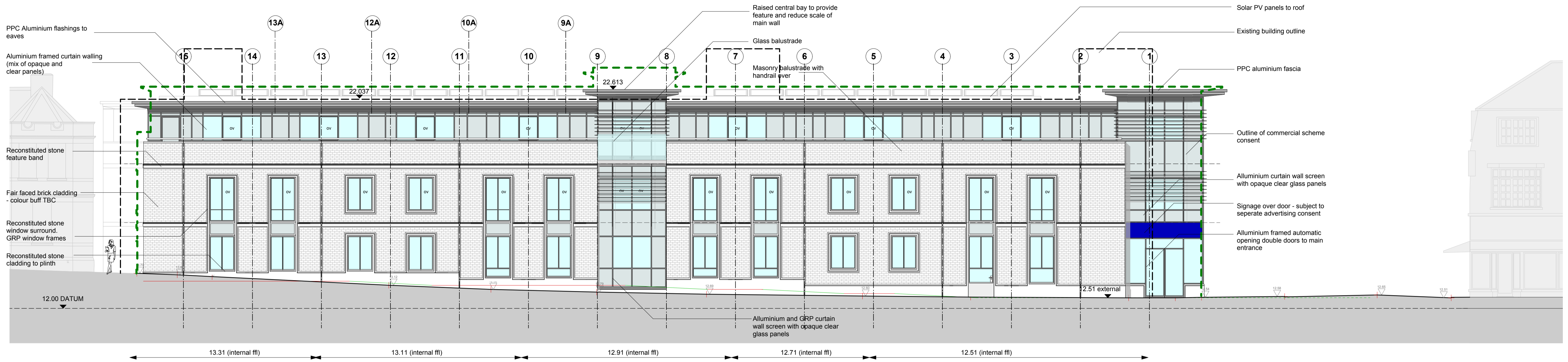


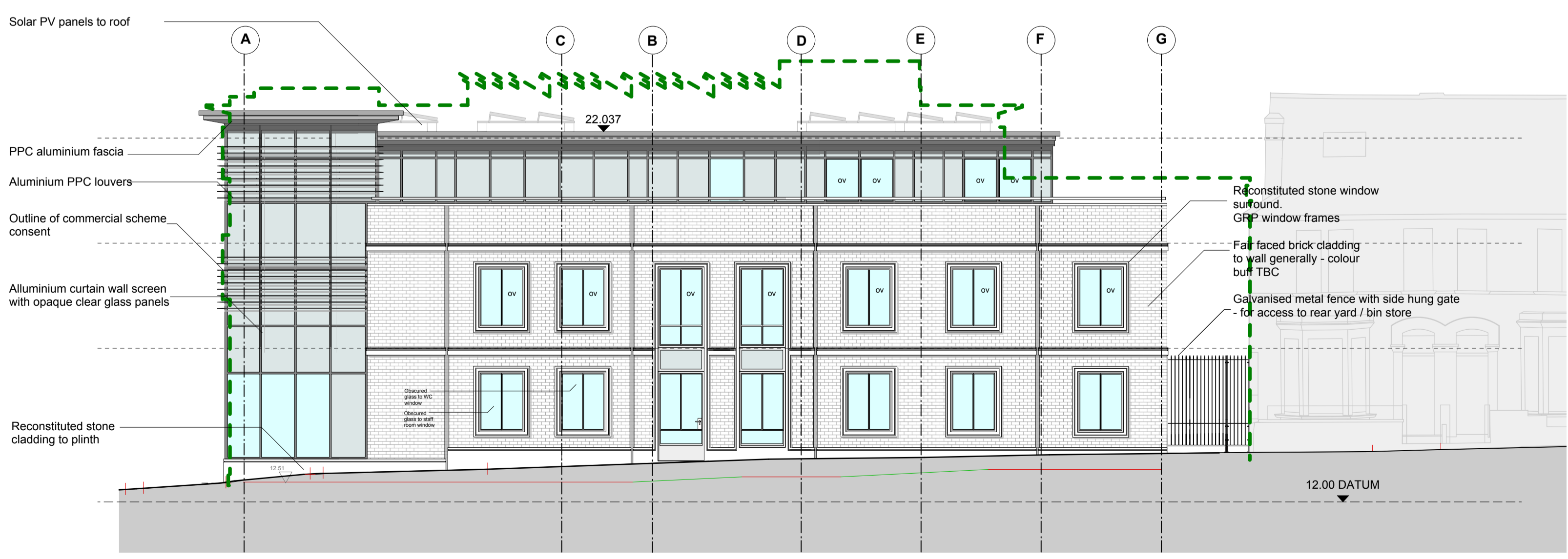
Notes:
 Do not scale dimensions from this drawing.
 Dimensions marked with an asterisk (*) are open site dimensions to be confirmed on site.
 All given dimensions are to be checked on site when setting out and any discrepancy reported immediately.



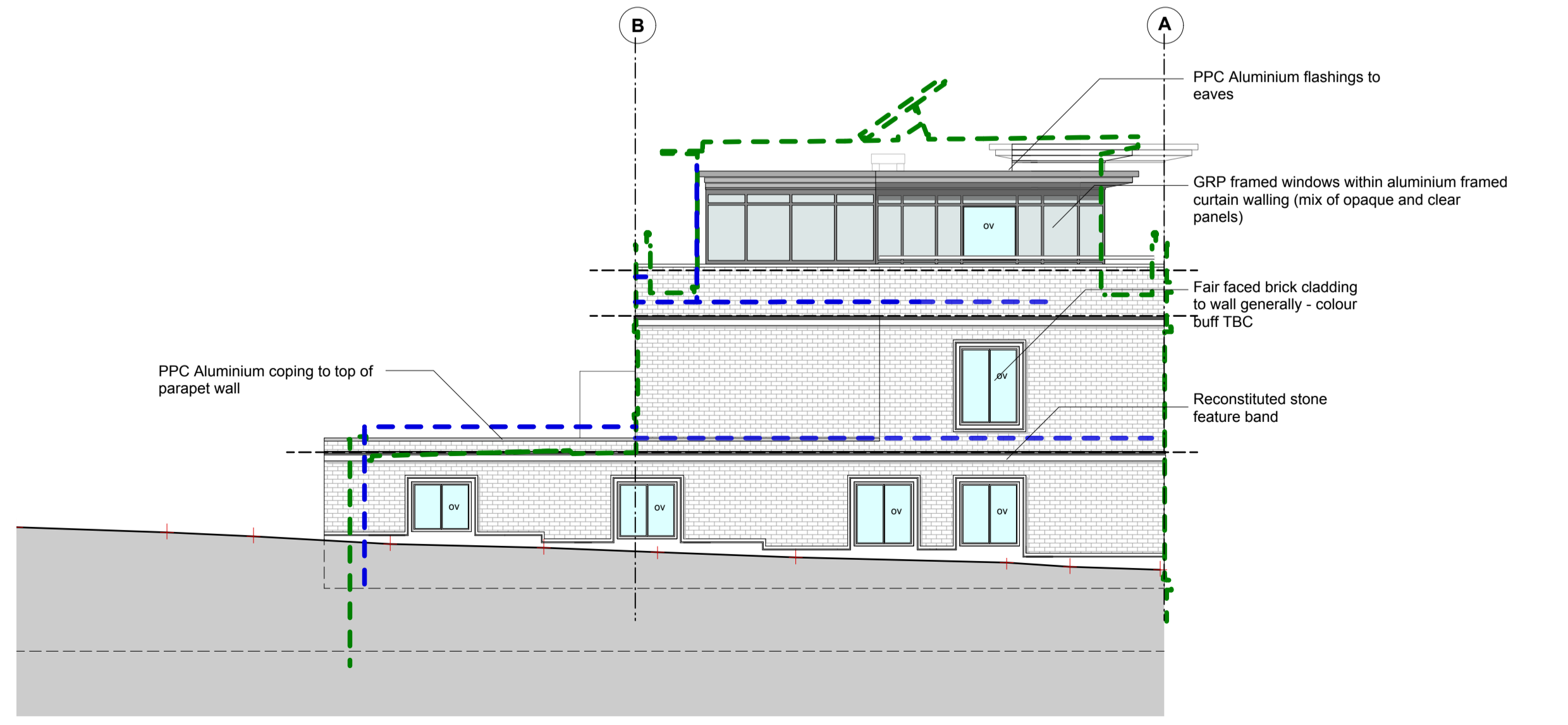
Paradise Road Elevation



Rear Elevation



Halford Road Elevation



Vineyard Passage Elevation

H	18/6/12	Graphic to front elevation amended	ods	pbp
G	14/6/12	Vertical shadow gaps added to Halford and Paradise Road elevations	ods	pbp
F	14/6/12	Aluminium cladding note amended Paradise Road plinth revised	ods	pbp
E	11/6/12	Halford Road plinth revised Rear elevation windows revised	ods	pbp
D	7/6/12	Revised in line Planners comments	ods	spb
C	9/5/12	Louvers revised	ods	pbp
B	4/5/12	Curtain wall revised	ods	pbp
A	18/4/12	Revised in line with TL comments	ods	pbp
Rev	Date	Notes	By	Chkd

Project:
 9-19 Paradise Road, Richmond

Client:
 Henry Boot Ltd

Drawing title:
 Proposed Elevations

Ref: -p03
 Sheet:
 Date: 19/03/2012
 Scale: 1:100 @ A1

Drawn by: ods
 Checked by: pbp

Drawing no.: 0779-02-111
 Revision: H