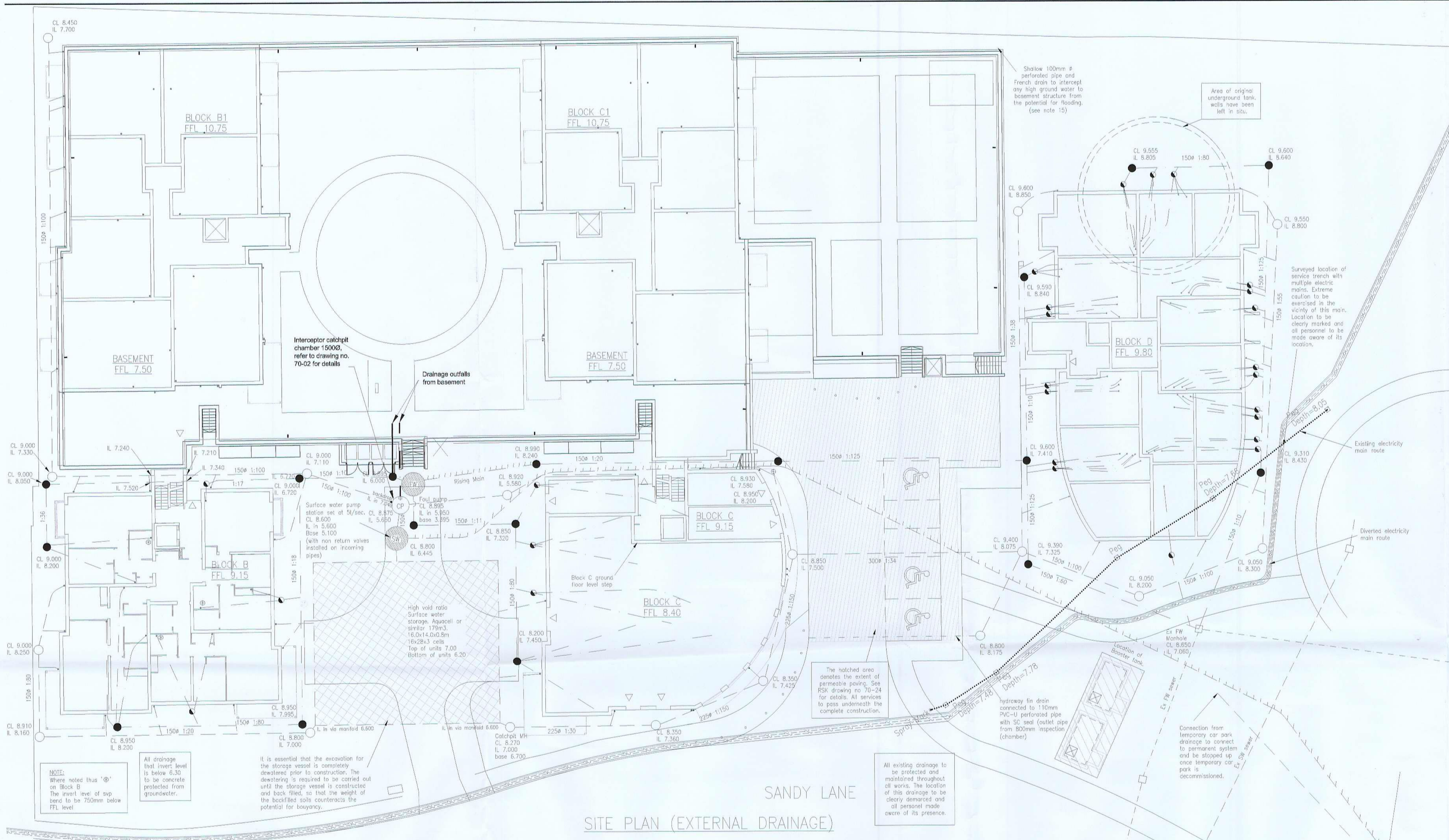


CDM RESIDUAL CIVIL / STRUCTURAL DESIGN RISKS

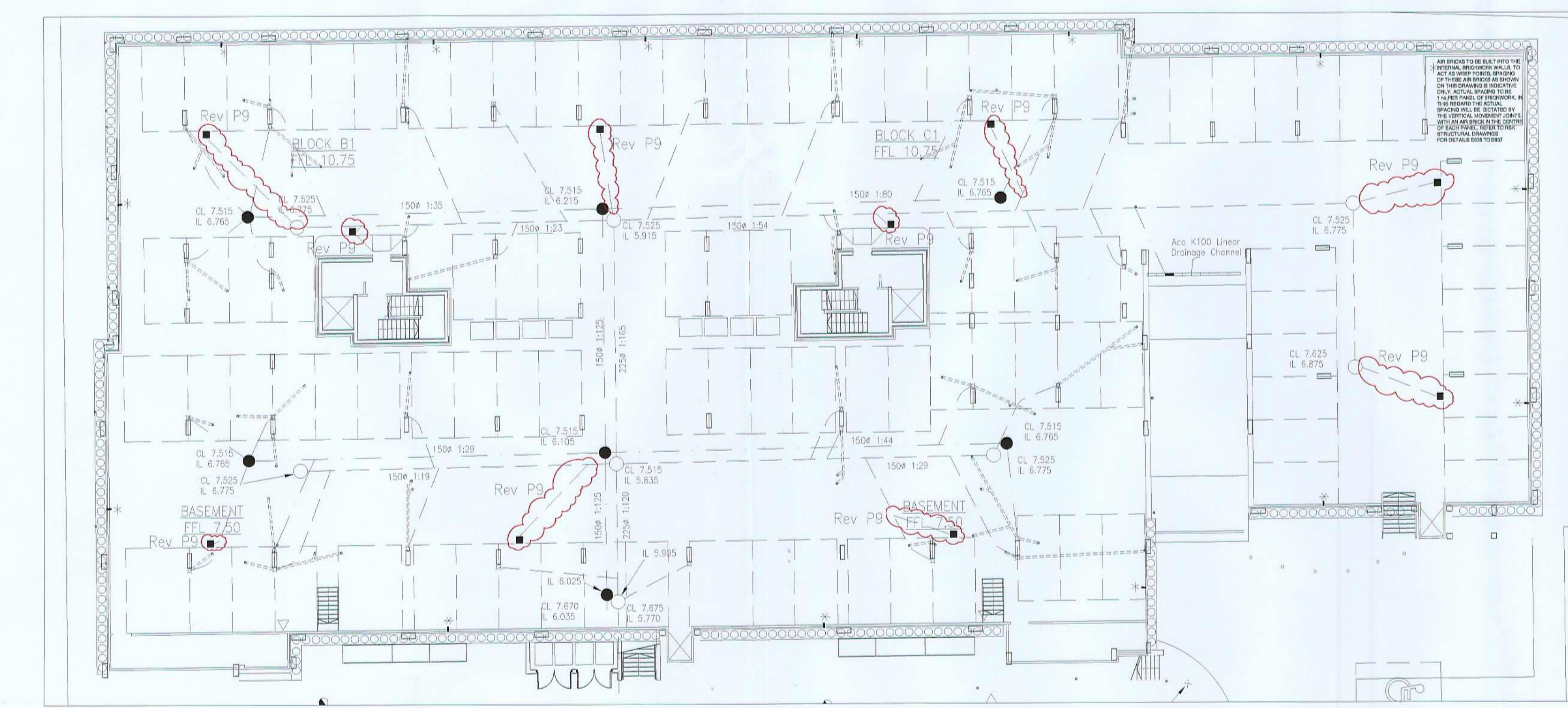
The specific risks associated with the content of this drawing are considered to be:-

- There will be deep excavations for structures and drainage systems. This is a high risk, high severity hazard. Particular attention to be paid to the high risk problem of dewatering to be required. The contractor should provide protection and support in accordance with health and safety legislation.
- Live Services - risks to contractor's personnel - Seek written confirmation from Statutory Authority and/or Building/site owner that all live services - especially electricity services - have been disconnected or diverted prior to construction. If any services are to remain live during the construction work, ensure that the locations of these are identified and clearly marked. All operatives are to be made aware of their presence. Employ hand digging near/adjacent to any known live services.

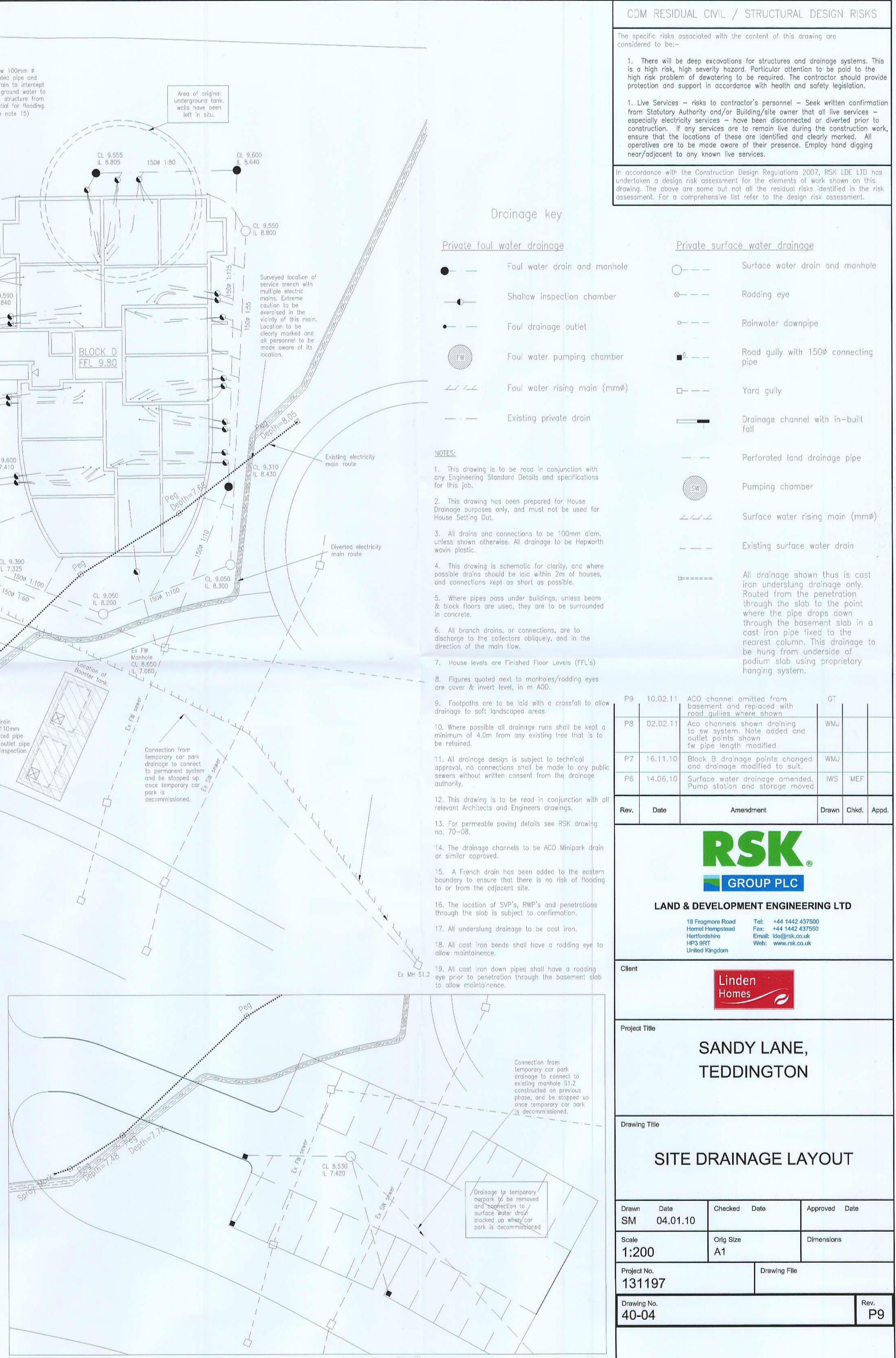
In accordance with the Construction Design Regulations 2007, RSK LDE LTD has undertaken a design risk assessment for the elements of work shown on this drawing. The above are some but not all the residual risks identified in the risk assessment. For a comprehensive list refer to the design risk assessment.



SANDY LANE  
SITE PLAN (EXTERNAL DRAINAGE)



BASEMENT PLAN (INTERNAL DRAINAGE)



TEMPORARY CAR PARK PLAN

Drainage key

- Private foul water drainage**
- Foul water drain and manhole
  - Shallow inspection chamber
  - Foul drainage outlet
  - Foul water pumping chamber
  - Foul water rising main (mmø)
  - Existing private drain
- Private surface water drainage**
- Surface water drain and manhole
  - Roding eye
  - Rainwater downpipe
  - Road gully with 150ø connecting pipe
  - Yard gully
  - Drainage channel with in-built fall
  - Perforated land drainage pipe
  - Pumping chamber
  - Surface water rising main (mmø)
  - Existing surface water drain

NOTES:

- This drawing is to be read in conjunction with any Engineering Standards Details and specifications for this job.
- This drawing has been prepared for House Drainage purposes only, and must not be used for House Setting Out.
- All drains and connections to be 100mm diam, unless shown otherwise. All drainage to be Hepworth woven plastic.
- This drawing is schematic for clarity, and where possible drains should be laid within 2m of houses, and connections kept as short as possible.
- Where pipes pass under buildings, unless beam & block floors are used, they are to be surrounded in concrete.
- All branch drains, or connections, are to discharge to the collectors obliquely, and in the direction of the main flow.
- House levels are Finished Floor Levels (FFL's)
- Figures quoted next to manholes/roding eyes are cover & invert level, in m AOD.
- Footpaths are to be laid with a crossfall to allow drainage to soft landscaped areas.
- Where possible all drainage runs shall be kept a minimum of 4.0m from any existing tree that is to be retained.
- All drainage design is subject to technical approval, no connections shall be made to any public sewers without written consent from the drainage authority.
- This drawing is to be read in conjunction with all relevant Architects and Engineers drawings.
- For permeable paving details see RSK drawing no. 70-08.
- The drainage channels to be ACO Minipark drain or similar approved.
- A French drain has been added to the eastern boundary to ensure that there is no risk of flooding to or from the adjacent site.
- The location of SVP's, RWP's and penetrations through the slab is subject to confirmation.
- All underlaid drainage to be cast iron.
- All cast iron bends shall have a roding eye to allow maintenance.
- All cast iron down pipes shall have a roding eye prior to penetration through the basement slab to allow maintenance.

Rev.	Date	Amendment	Drawn	Chkd.	Appd.
P9	10.02.11	ACO channel omitted from basement and replaced with road gullies where allowed			GT
P8	02.02.11	ACO channels shown draining to sw system. Note added and outlet points shown for pipe length modified			WLU
P7	16.11.10	Block B drainage points changed and drainage modified to suit			WLU
P6	14.06.10	Surface water drainage amended. Pump station and storage moved			IWS MEF



LAND & DEVELOPMENT ENGINEERING LTD

18 Frogmore Road  
Hemel Hempstead  
Hertfordshire  
HP3 9RT  
United Kingdom

Tel: +44 1442 437600  
Fax: +44 1442 437650  
Email: lde@rsk.co.uk  
Web: www.rsk.co.uk



SANDY LANE,  
TEDDINGTON

SITE DRAINAGE LAYOUT

Drawn	Date	Checked	Date	Approved	Date
SM	04.01.10				
Scale	1:200	Orig Size	A1	Dimensions	
Project No.	131197	Drawing File			
Drawing No.	40-04	Rev.	P9		