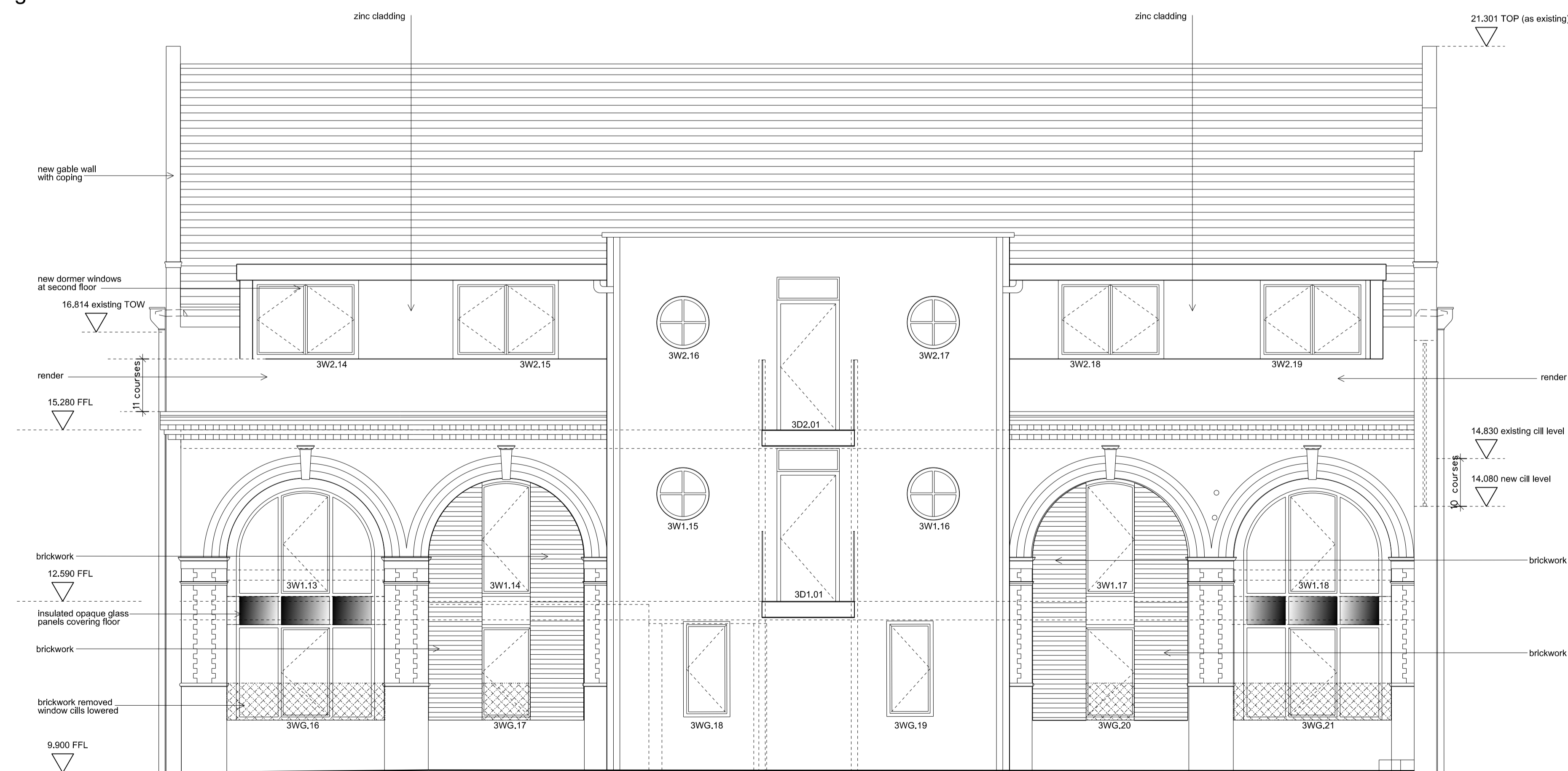


NORTH ELEVATION - Buildings 1 and 3



SOUTH COURTYARD ELEVATION - Building 3

NOTES ON MATERIALS

- INDICATES ALTERATION TO BRICKWORK
- NEW STRUCTURAL OPENING IN EXISTING BRICKWORK
- INSULATED METAL PANEL IN EXISTING WINDOW OPENING

C	Building 3- 1st & 2nd floor windows north elevation revised, Building 1 window 1WG.10 removed, glass entrance canopy added	RC	CR	13.07.12
B	TENDER ISSUE	ST	CR	02.03.12
A	Courtyard elevation added windows/doors revised	RC	CR	06.02.12

Rev	Revision	Drawn	Checked	Date
-----	----------	-------	---------	------

ISSUED FOR
TENDER

ACANTHUS LW ARCHITECTS

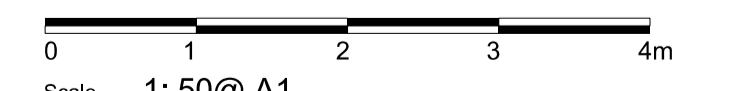
Voysey House, Barley Mow Passage, London W4 4PN
t: 020 8994 2288 f: 020 8747 9001 www.acanthuslw.com

ARCHITECTS HISTORIC BUILDING CONSULTANTS LANDSCAPE ARCHITECTS

Client
HAMILTON LOFTS LIMITED

Project
37 HAMILTON ROAD

Drawing Title
BUILDINGS 1 & 3 NORTH ELEVATION & COURTYARD SOUTH ELEVATION



Drawn	Checked	Date
RC	CR	JAN 2012
Job No.	Drawing No.	Rev.
3903	1300	C