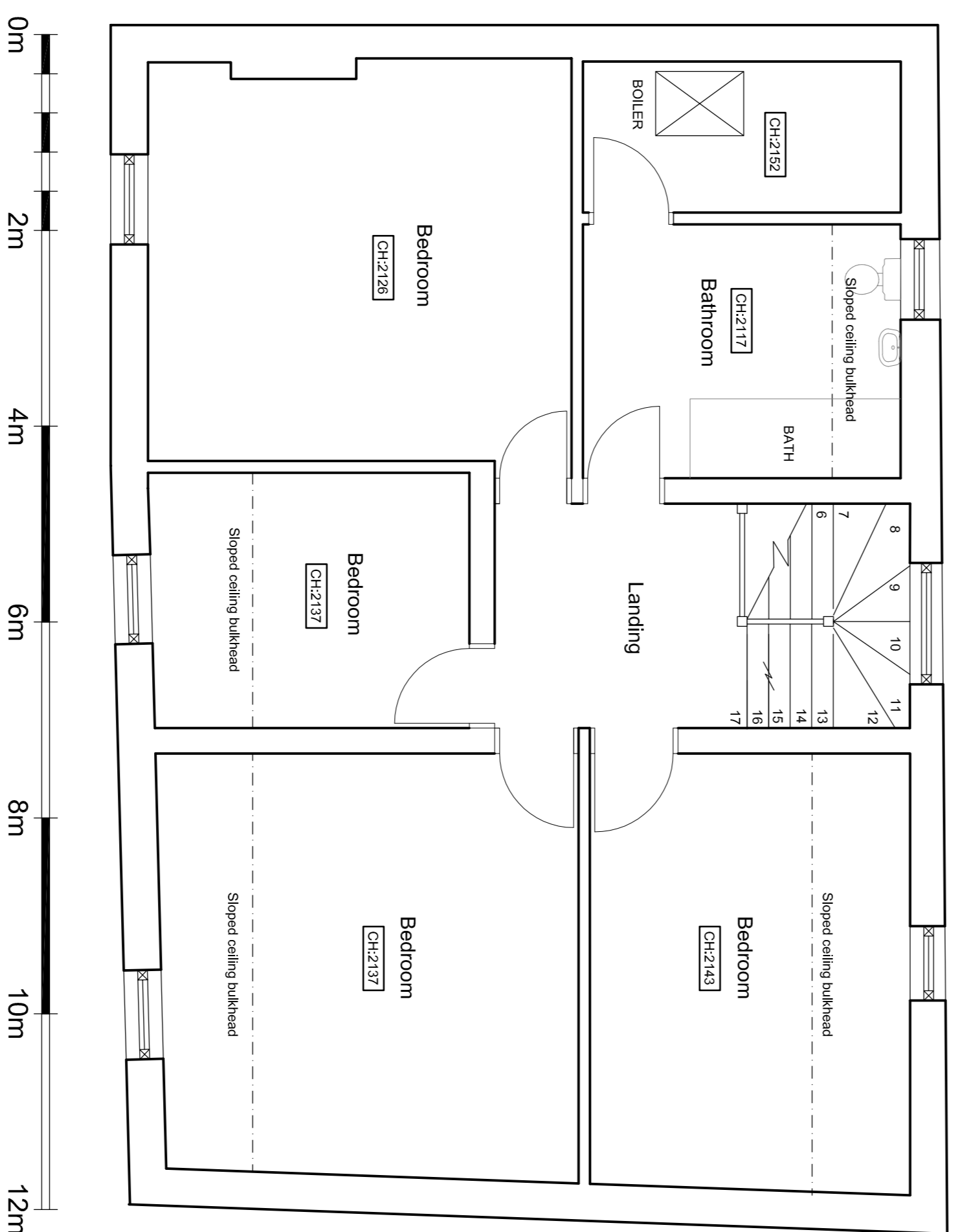
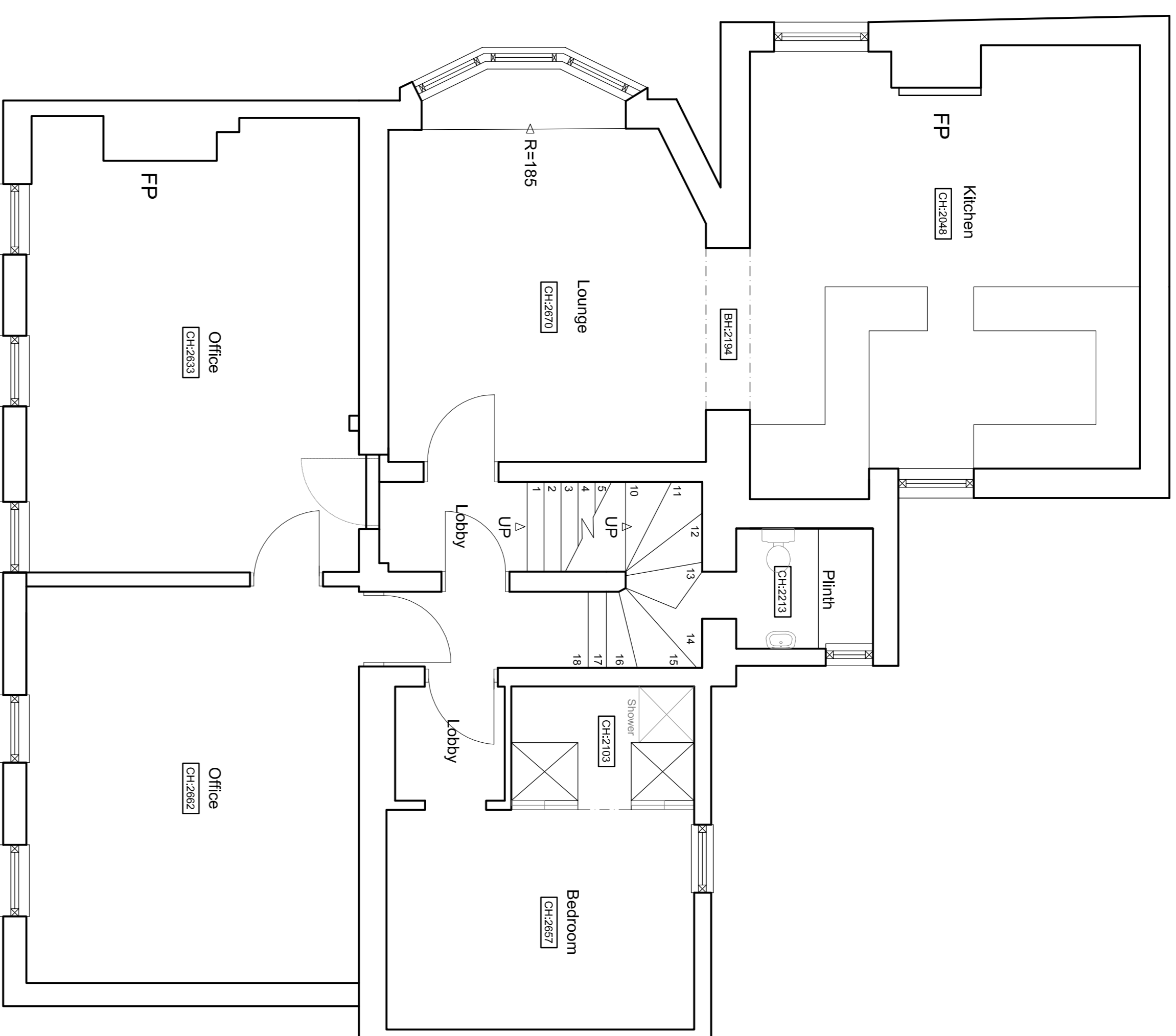


BASEMENT FLOOR PLAN, 1:50 @ A1



SECOND FLOOR PLAN, 1:50 @ A1



FIRST FLOOR PLAN, 1:50 @ A1

rev	date	note	int.
-	23.07.2012	ISSUED FOR PLANNING	BW
-	13.04.2012	Issued For Planning	BW

Stage: **PLANNING**

Client: **RB&AH LTD**

Project: **THE CROWN,  
174 RICHMOND ROAD,  
TWICKENHAM,  
MIDDLESEX,  
TW1 2NH**

Title: **EXISTING BASEMENT, FIRST  
AND SECOND FLOOR PLANS**

Scale	1:50 @A1	Dwg size:	A1
Drawn:	SMH	Date:	MARCH 12
Drawing No.	P1169-01	Revision:	

**BGW DESIGN STUDIO**

South Yorkshire  
Palmer Street  
Hyde Park  
Doncaster  
DN4 5DD

London  
First Floor  
107 Cheapside  
London  
EC2V 6DN

Studio: 01202 321 194  
Fax: 01202 321 324  
www.bgwdesignstudio.com

Studio: 0207 7611 4947