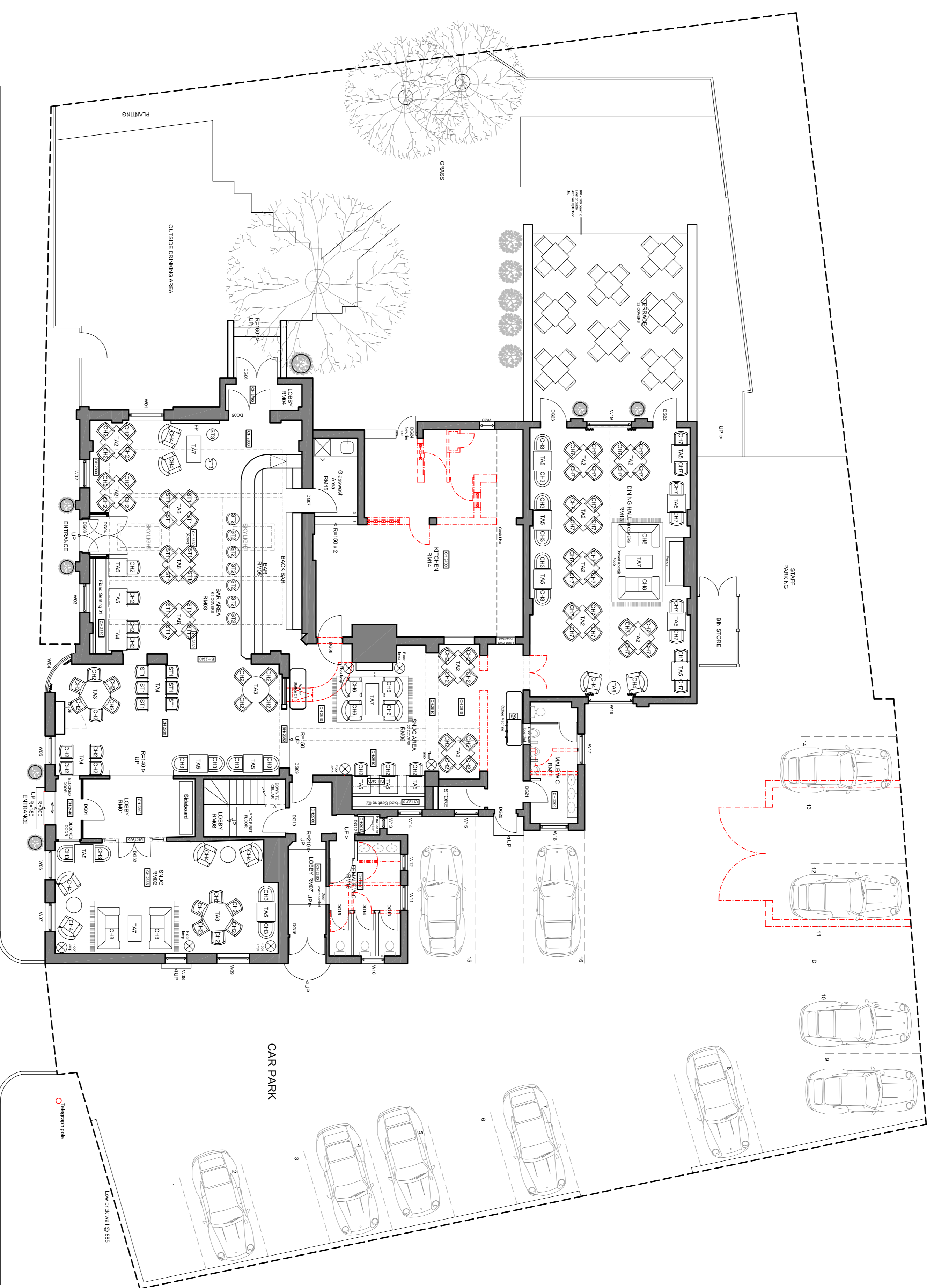


© copyright  
This drawing, design & all information contained herein remains the sole property of BGV DESIGN STUDIO unless permission is obtained in writing.

NOTES:  
- Not scale from this drawing. All dimensions must be checked on site. The contractor must verify all site dimensions, drawings, details & specifications. Any discrepancies must be reported to BGV DESIGN STUDIO prior to any commencement of work.  
- All specified items are to be installed in accordance with the manufacturers' recommendations & instructions.

TOTAL SITE DEMISE :  
TOTAL: 1347m<sup>2</sup>

CAR PARKING PROVISION:  
14 SPACES  
2 DISABLED SPACES



SITE PLAN - 1:100 @ A1

rev	date	note	int.
A	23.07.2012	Issued For Planning	BW
-	13.04.2012	Issued For Planning	BW

Stage: PLANNING  
Client: RB&AH LTD  
Project: THE CROWN,  
174 RICHMOND ROAD,  
TWICKENHAM,  
MIDDLESEX,  
TW1 2NH

Title: PROPOSED SITE PLAN  
Scale: 1:100 @A1  
Dwg size: A1  
Drawn: SWH  
Date: MARCH12  
Drawing No. P1169-14  
Revision: A

**South Yorkshire**  
Palmer Street  
Hyde Park  
Doncaster  
DN4 5DD

Studio:  
01202 351 1924  
01202 321 324  
www.bgvdesignstudio.com

**London**  
First Floor  
107 Cheapside  
London  
EC2V 6DN

Studio: 020 7511 4947