

0779-02-115

Notes:
Do not scale dimensions from this drawing.
Dimensions marked with an asterisk thus * are open site dimensions to be confirmed on site.
All given dimensions are to be checked on site when setting out and any discrepancy reported immediately.

RECEIVED
11 SEP 2012
PLANNING

Rev	Date	Notes	By	Chkd
A	30/8/12	Window reveal depth increased	ods	pbp

Project:
9-19 Paradise Road, Richmond

Client:
Henry Boot Ltd

Drawing title:
Ancillary Accomodation

Ref: -p03
Sheet:

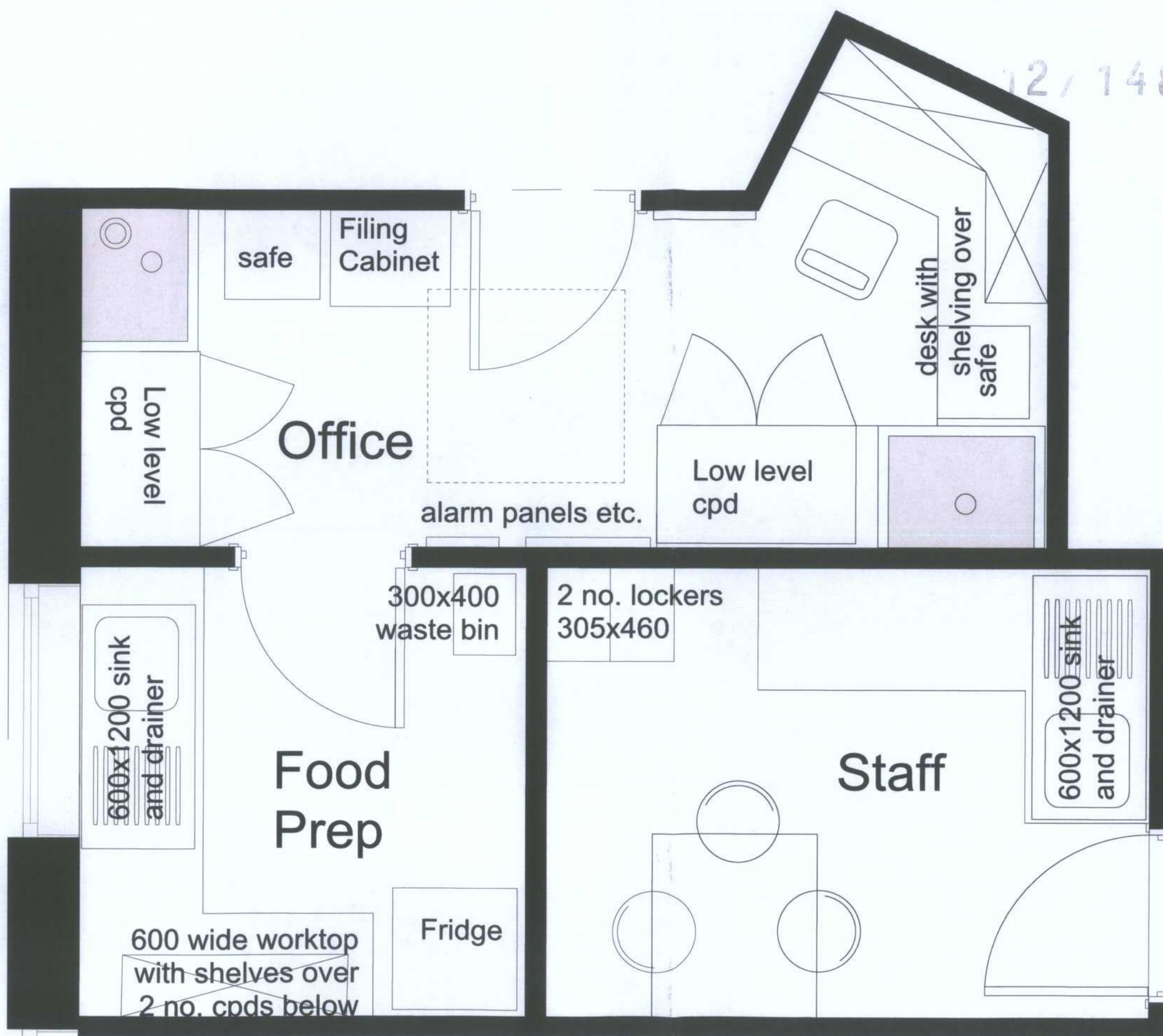
Date: 10.03.2012
Scale: 1:20 @ A3

Drawn by: ods
Checked by: pbp

Drawing no.: 0779-02-115
Revision: A

bpr architects

The Boathouse, Embankment
Putney, London, SW15 1LB
t +44(0)20 8785 9983
f +44(0)20 8780 1507
e info@bprarchitects.com
www.bprarchitects.com



○ Ancillary accomodation