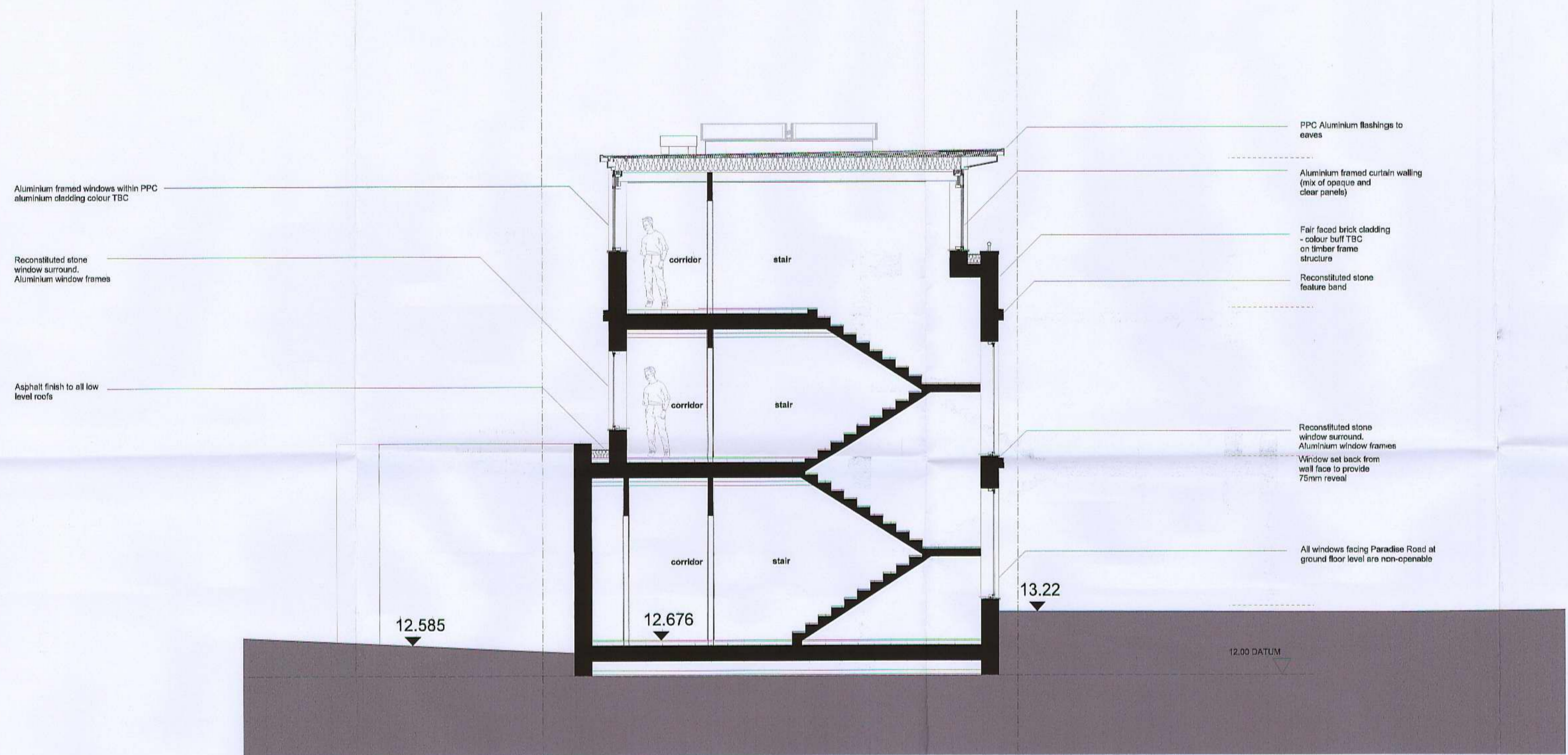


Notes:  
Do not scale dimensions from this drawing.  
Dimensions marked with an asterisk \* are open site  
dimensions to be confirmed on site.  
All given dimensions are to be checked on site when  
setting out and any discrepancy reported immediately.

RECEIVED  
11 SEP 2012  
PLANNING

12/1486/FUL



Proposed Section CC

B	30/8/12	Window reveal depth increased	ods	plp
A	11/8/12	Revised in line with Planning comments	ods	plp
Rev	Date	Notes	By	Chk
Project:				
9-19 Paradise Road, Richmond				
Client:				
Henry Boot Ltd				
Drawing title:				
Proposed Section EE Through Stair				
Ref:				
-p03				
Date:				
19.03.2012				
Scale:				
1:50 @ A1				
Drawn by:				
ods				
Checked by:				
plp				
Drawing no.:				
0779-02-110				
Revision:				
B				

bpr architects  
The Boathouse, Embankment  
Putney, London, SW15 1LB  
t +44(0)20 8785 9983  
f +44(0)20 8780 1507  
e info@bprarchitects.com  
www.bprarchitects.com