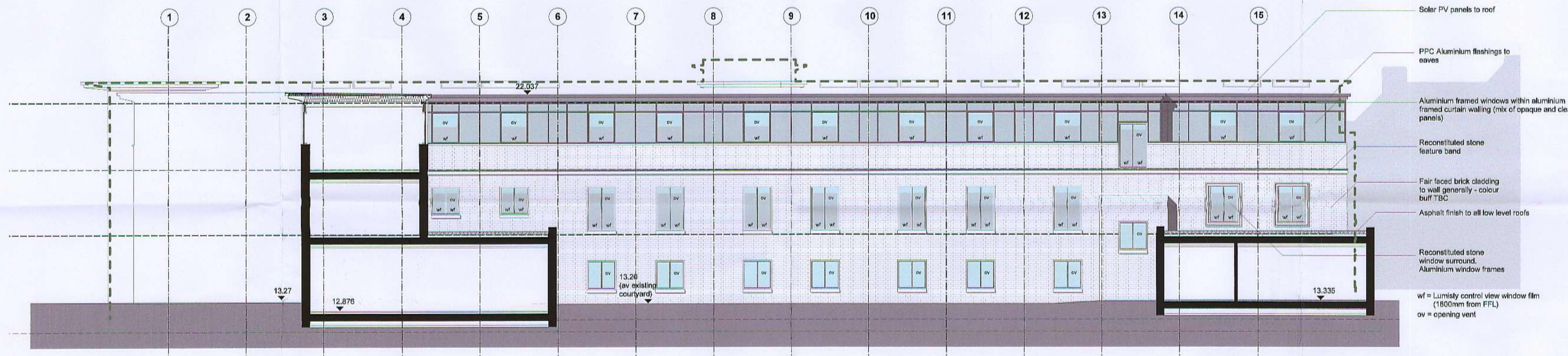


Paradise Road Elevation



Rear Elevation



Halford Road Elevation



Vineyard Passage Elevation

Notes:
Do not scale dimensions from this drawing.
Dimensions marked with an asterisk * are open site dimensions to be confirmed on site.
All given dimensions are to be checked on site when setting out and any discrepancy reported immediately.

RECEIVED
11 SEP 2012
PLANNING

12/1486/FUL

J	28/8/12	ORP windows revised to Aluminium	ods	ptp
H	18/8/12	Notes added for recessed shadow gaps to brickwork	ods	ptp
G	14/6/12	Graphs to front elevation amended	ods	ptp
F	14/6/12	Vertical shadow gaps added to Halford and Paradise Road elevations	ods	ptp
E	11/6/12	Aluminium cladding note amended	ods	ptp
D	7/5/12	Paradise Road plinth revised	ods	ptp
C	8/5/12	Rear elevation windows revised	ods	ptp
B	4/5/12	Halford Road plinth revised	ods	ptp
A	18/4/12	Revised in line with TL comments	ods	ptp

Project:
9-19 Paradise Road, Richmond

Client:
Henry Boot Ltd

Drawing title:
Proposed Elevations

Ref: -p03
Sheet:

Date: 19/03/2012
Scale: 1:100 @ A1

Drawn by: ods
Checked by: ptp

Drawing no.: 0779-02-111
Revision:

bpr architects

The Boathouse, Embankment
Fulney, London, SW15 1LB
t +44(0)20 8785 9983
f +44(0)20 8780 1507
e info@bprarchitects.com
www.bprarchitects.com