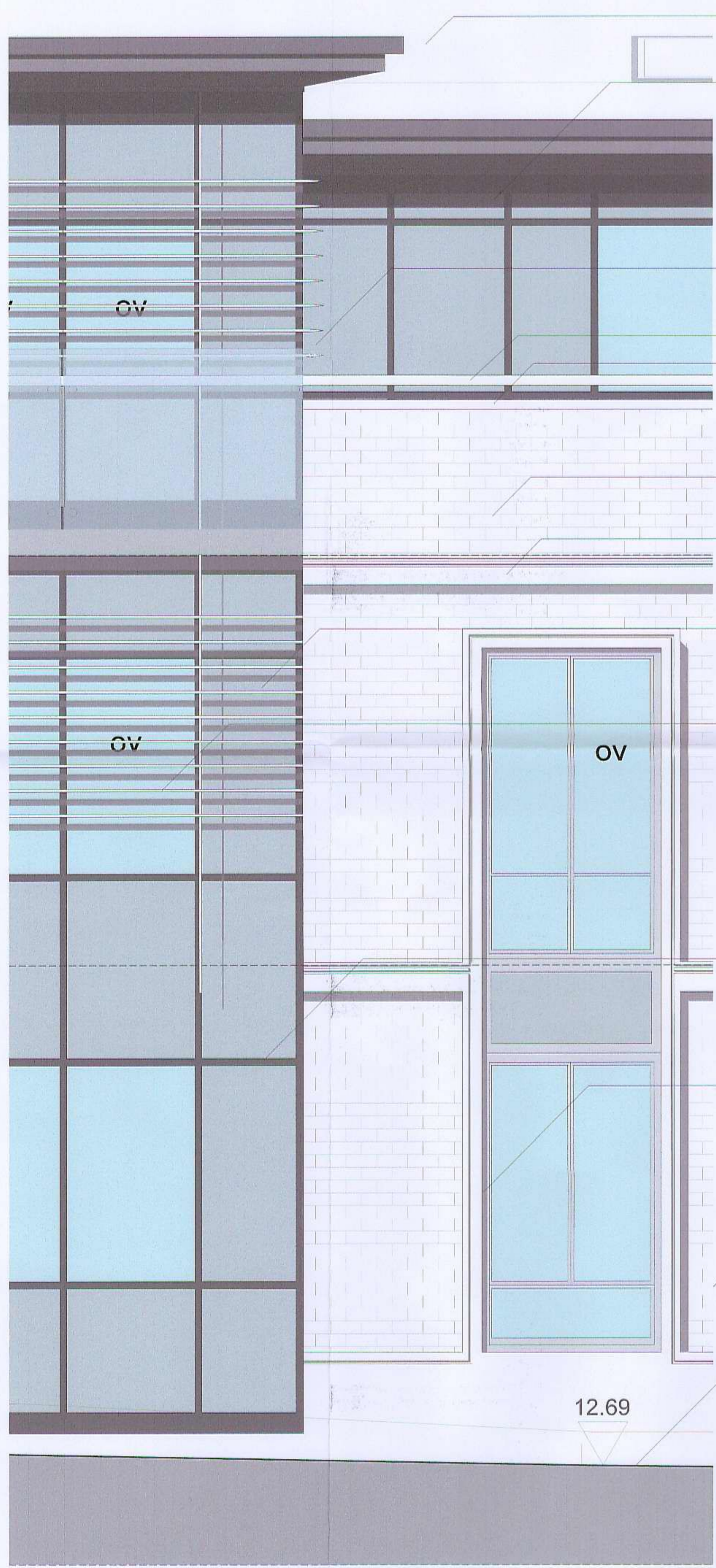


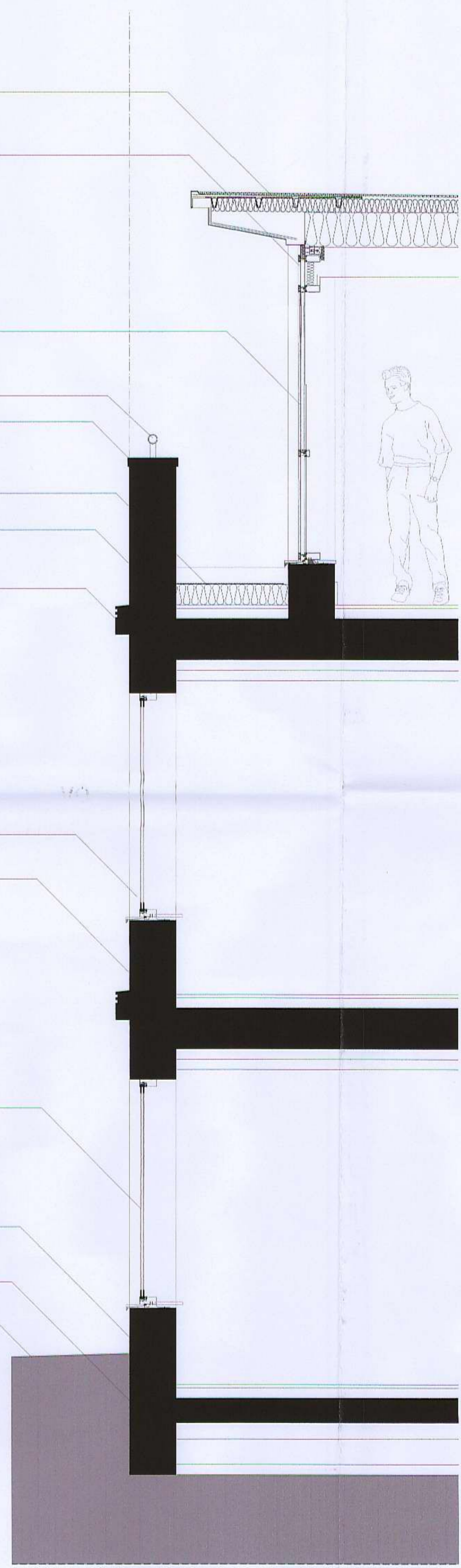
Notes:  
 Do not scale dimensions from this drawing.  
 Dimensions applied with an asterisk (\*) are open site  
 dimensions to be confirmed on site.  
 All given dimensions are to be checked on site when  
 setting out and any discrepancy reported immediately.

12/1486/FUL

RECEIVED  
 11 SEP 2012  
 PLANNING



- PPC aluminium overhanging eaves
- High level opaque panel to glazing system
- PPC aluminium framed full height glazed curtain wall with opaque glass infill panels
- Stainless steel CHS fixed into brick parapet
- Reconstituted stone coping
- Asphalt roof finish to first floor roof areas
- Fair faced brick parapet walls - colour buff, spec TBC
- Reconstituted stone feature band with routed detail
- Aluminium PPC louvres
- PPC aluminium framed full height glazed curtain wall with opaque glass infill panels
- Window set back from wall face to provide 75mm reveal
- Substructure to SE design
- Opaque glass infill spandrel panels to glazing system
- GRP framed full height windows
- Reconstituted stone cladding to plinth
- Substructure to SE design
- Existing pavement - falls away from building



C	30/8/12	Window reveal depth increased	ods	ptp
B	11/8/12	Revised in line Planners comments	ods	ptp
A	8/5/12	Section amended Louvres revised	ods	ptp
Rev	Date	Notes	By	Chkd

Project:  
 9-19 Paradise Road, Richmond

Client:  
 Henry Boot Ltd

Drawing title:  
 Typical Elevation Detail

Ref:  
 -p03

Date:  
 16.03.2012

Scale:  
 1:20 @ A1

Drawn by:  
 ods

Checked by:  
 pbp

Drawing no.:  
 0778-02-116

Revision:  
 C

bpr architects  
 The Boatouse, Embankment  
 Putney, London, SW15 1LB  
 t +44(0)20 8785 9163  
 f +44(0)20 8780 1507  
 e info@bprarchitects.com  
 www.bprarchitects.com