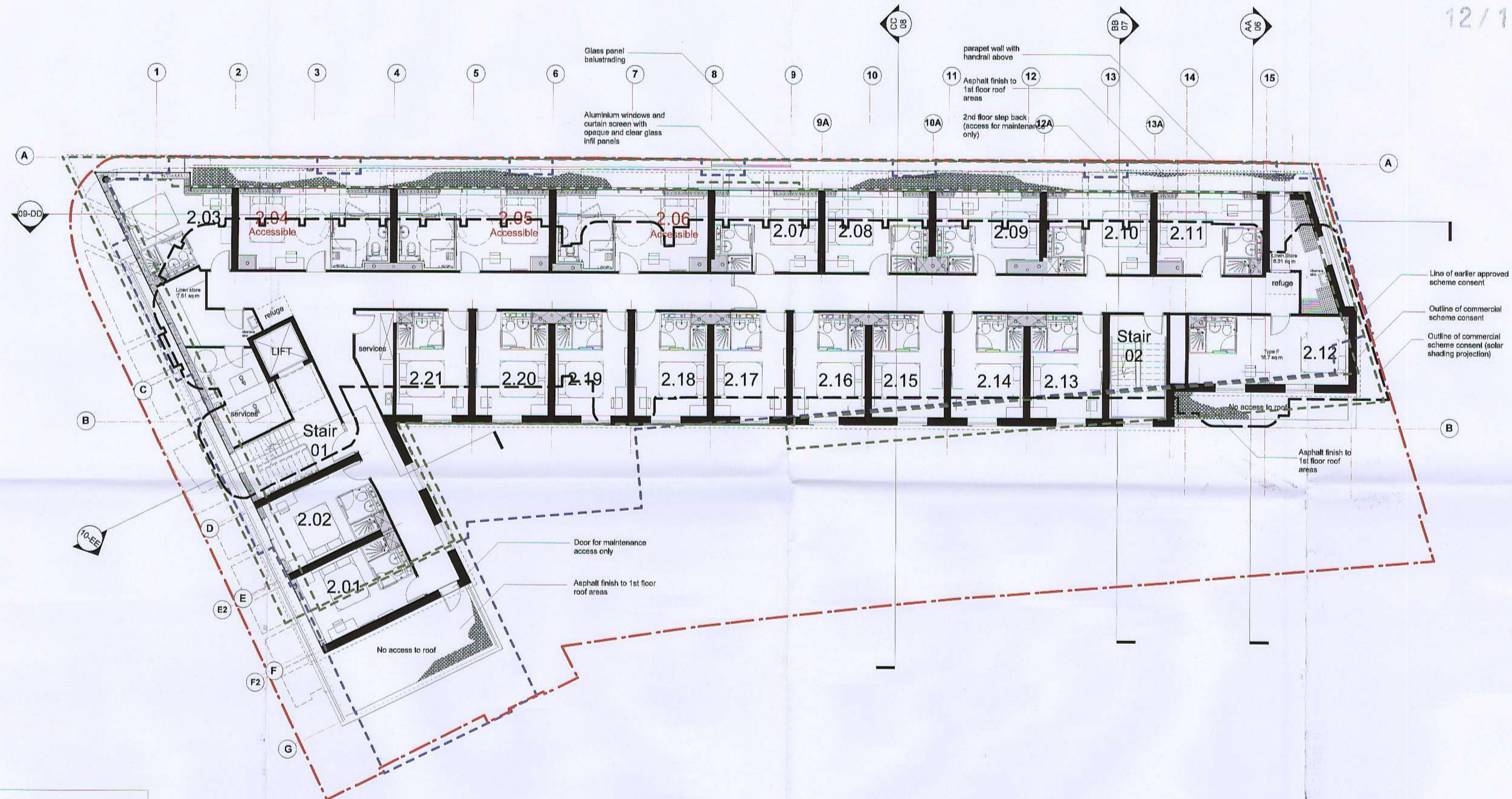


RECEIVED
11 SEP 2012
PLANNING

12/1486/FUL



Key to boundaries

- - - Site Boundary
- - - Outline of existing building to be demolished
- - - Outline of earlier commercial consent. Planning ref AM/JLH0132
- - - Outline of commercial consent Planning ref 06/1406/FUL

Second Floor Plan

Notes:
Do not scale dimensions from this drawing.
Dimensions marked with an asterisk (*) are open site dimensions to be confirmed on site.
All green dimensions are to be checked on site when setting out and any discrepancy reported immediately.

003-05 Hazard Notes

Please be aware of the following Hazards have been identified in relation to the works shown on this drawing

ID	Hazard	Action
1	Cladding installation	Reduce large elements for work at height
2	Glazing	Provide safe working platform for working at height
3	Roof works	provide barriers for working close to edge
4	Access to roof	provide safe access to roof
5	Roof finish vulnerable to damage during works	protect roof finish at all times
6	Low level roofs vulnerable	Specified as asphalt to avoid cigarette burns

Rev	Date	Notes	By	Chkd
D	30/8/12	Window reveal depth increased	ods	plp
C	11/8/12	Revised in line with TL comments	ods	plp
B	4/6/12	Room 2.03 curtain wall revised Section EE reference added	ods	epc
A	18/4/12	Revised in line with TL comments	ods	apc

Project:
9-19 Paradise Road, Richmond

Client:
Henry Boot Ltd

Drawing title:
Proposed New Hotel
Second Floor Plan

Ref:
-p03

Date:
19.03.2012

Scale:
1:100 @ A1

Drawn by:
ods

Checked by:
plp

Drawing no.:
0779-02-104

Revision:
D

bpr architects
The Boathouse, Embankment
Putney, London, SW15 1LB
t +44(0)20 8786 9983
f +44(0)20 8786 1507
e info@bprarchitects.com
www.bprarchitects.com