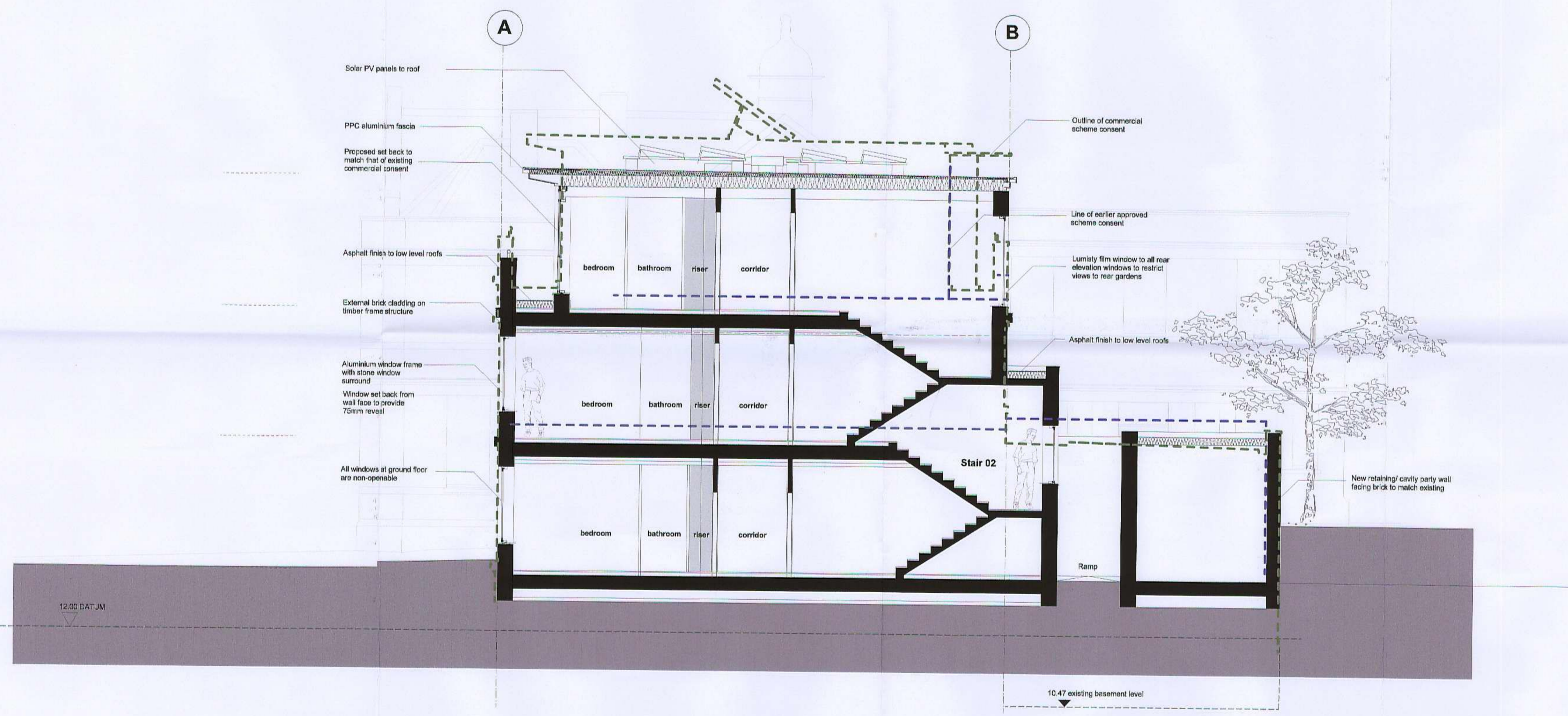
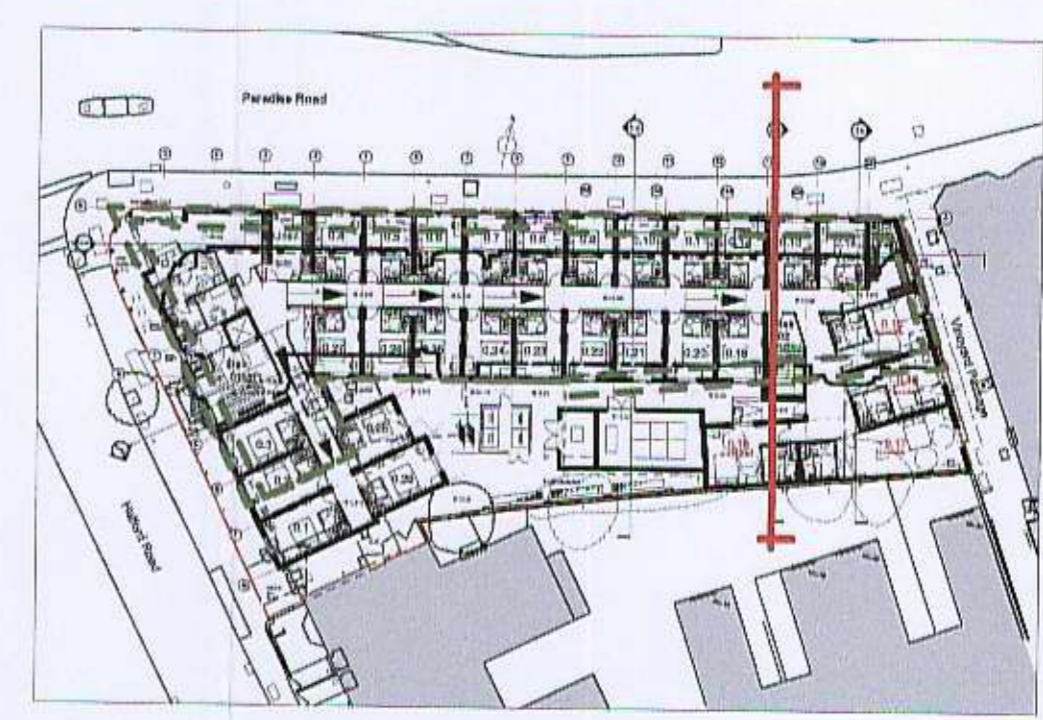


Notes:
 Do not scale dimensions from this drawing.
 Dimensions marked with an asterisk "*" are open site
 dimensions to be confirmed on site.
 All given dimensions are to be checked on site upon
 setting out and any discrepancy reported immediately.

RECEIVED
 11 SEP 2012
 PLANNING

12/1486/FUL



Proposed Section AA

B	30/8/12	Window reveal depth increased	ods	ptp
A	11/8/12	Revised in line Planners comments	ods	spc
Rev	Date	Notes	By	Chkd

Project:
 9-19 Paradise Road, Richmond

Client:
 Henry Boot Ltd

Drawing title:
 Proposed Section BB

Ref: -p03
 Sheet:
 Date: 19.03.2012
 Scale: 1:50 @ A1

Drawn by: ods
 Checked by: ptp

Drawing no.: 0779-02-107
 Revision: B

bpr architects
 The Boathouse, Embankment
 Putney, London, SW15 1LB
 t +44(0)20 8785 9903
 f +44(0)20 8780 1507
 e info@bprarchitects.com
 www.bprarchitects.com