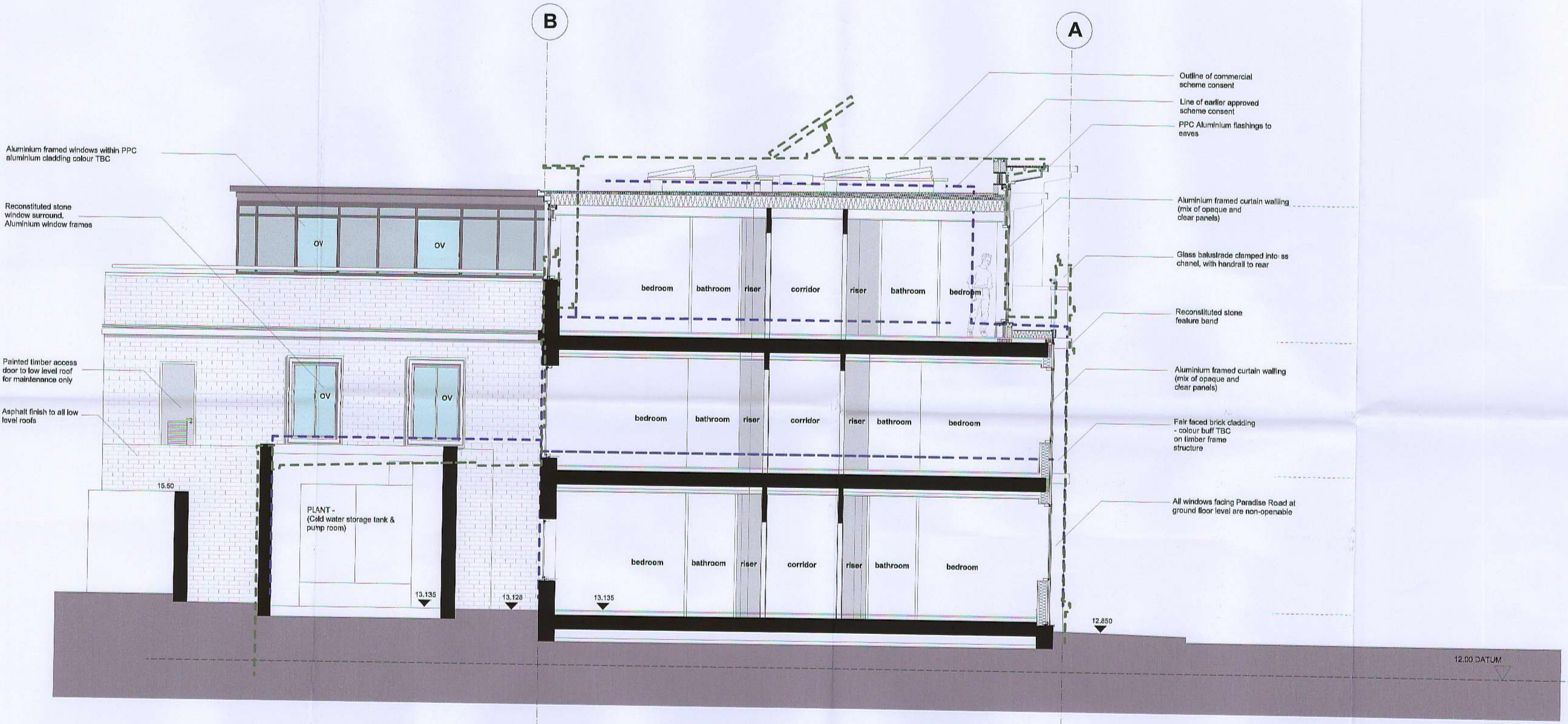


Notes:
 Do not scale dimensions from this drawing.
 Dimensions marked with an asterisk (*) are open site
 dimensions to be confirmed on site.
 All given dimensions are to be checked on site when
 setting out and any discrepancy reported immediately.

RECEIVED
 11 SEP 2012
 PLANNING

12/1486/FUL



Proposed Section CC

Rev.	Date	Notes	By	Chkd
B	30/8/12	Window reveal depth increased	ods	plp
A	11/8/12	Revised in line Planners comments	ods	spc

Project:
 9-19 Paradise Road, Richmond

Client:
 Henry Boot Ltd

Drawing title:
 Proposed Section CC
 Through Water Tank Room

Ref:
 -p03

Date:
 19.03.12

Scale:
 1:50 @ A1

Drawn by:
 ods

Checked by:
 plp

Drawing no.:
 0779-02-108

Revision:
 B

bpr architects
 The Boat House, Embankment
 Putney, London, SW15 1LB
 t +44(0)20 8785 9983
 f +44(0)20 8780 1507
 e info@bprarchitects.com
 www.bprarchitects.com