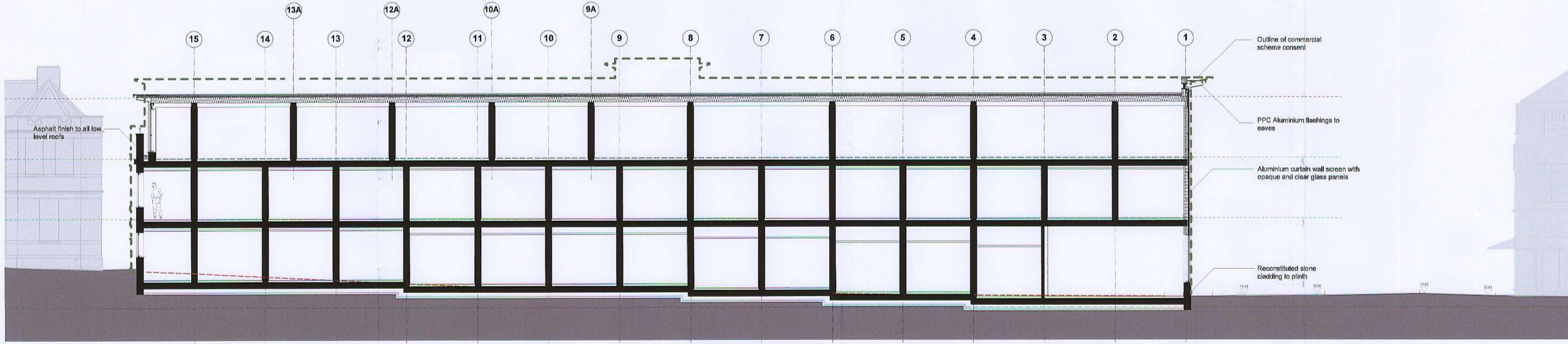


Notes:
Do not scale dimensions from this drawing.
Dimensions marked with an asterisk * are open site
dimensions to be confirmed on site.
All given dimensions are to be checked on site when
setting out and any discrepancy reported immediately.

RECEIVED
11 SEP 2012
PLANNING

1486/ FUL



Section DD (1.100)



Front Elevation in context (1.200)

E	30/8/12	Window reveal depth increased	ods	pbp
D	18/5/12	Graphic to front elevation amended	ods	pbp
C	15/8/12	Vertical shadow gaps added to Halford and Paradise Road elevations	ods	pbp
B	11/8/12	Revised in line Planners comment	ods	pbp
A	01/5/12	Lowrise revised	ods	apc
Rev	Date	Notes	By	Chkd

Project:
9-19 Paradise Road, Richmond

Client:
Henry Boot Ltd

Drawing title:
Proposed Section DD
+ Front Elevation in context

Ref: Sheet:
-p03

Date: Scale:
19.03.2012 see drawing

Drawn by: Checked by:
ods pbp

Drawing no.: Revision:
0779-02-109 E

bpr architects
The Bathhouse, Embankment
Putney, London, SW15 1LB
t +44(0)20 8785 9963
f +44(0)20 8780 1587
e info@bprarchitects.com
www.bprarchitects.com