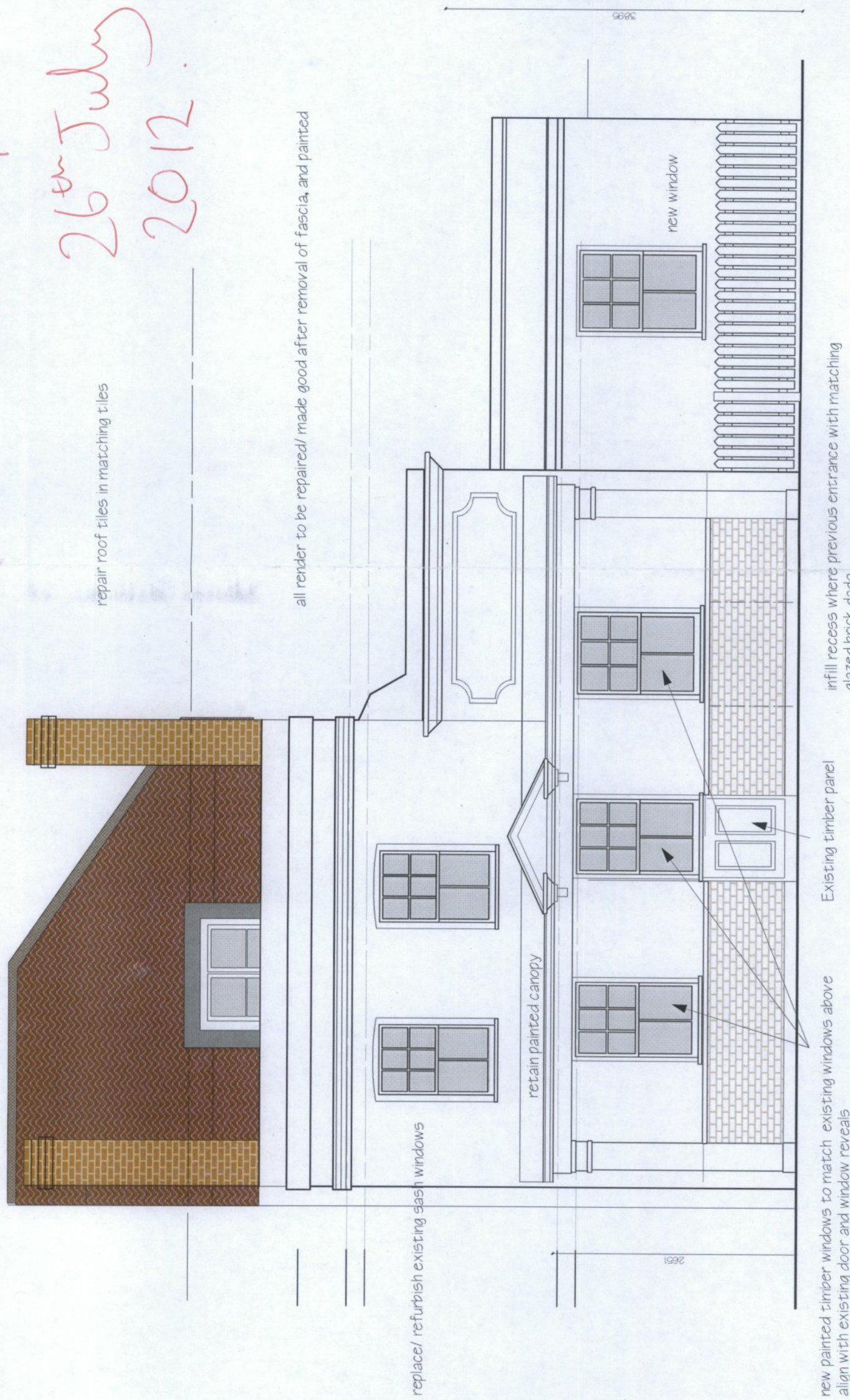
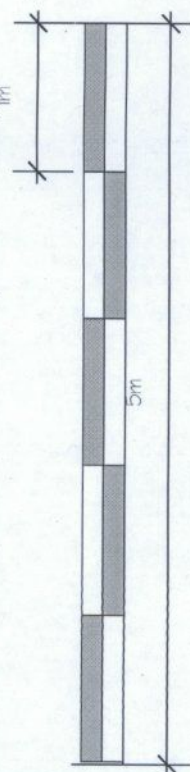


12/0524/FUL
 26th July
 2012



FRONT ELEVATION

Rev -A 3/4/2012 photovoltaics and rainwater butt shown
 Rev -B 26/7/2012 original roof profile retained (eaves not raised) 1m



PROJECT: ROYAL OAK, HAM, SURREY TWIO 7HN

DRAWING: PROPOSED HAM STREET ELEVATION SCALE 1:50

Job No. 736

Dwg No. 206

Revision No.-B

Date May 2012

VC DESIGN
 Architecture + Interiors

T: 07984 069145

81 South Worple Way, London SW14 8NG
 veronicacongdon@blueyonder.co.uk