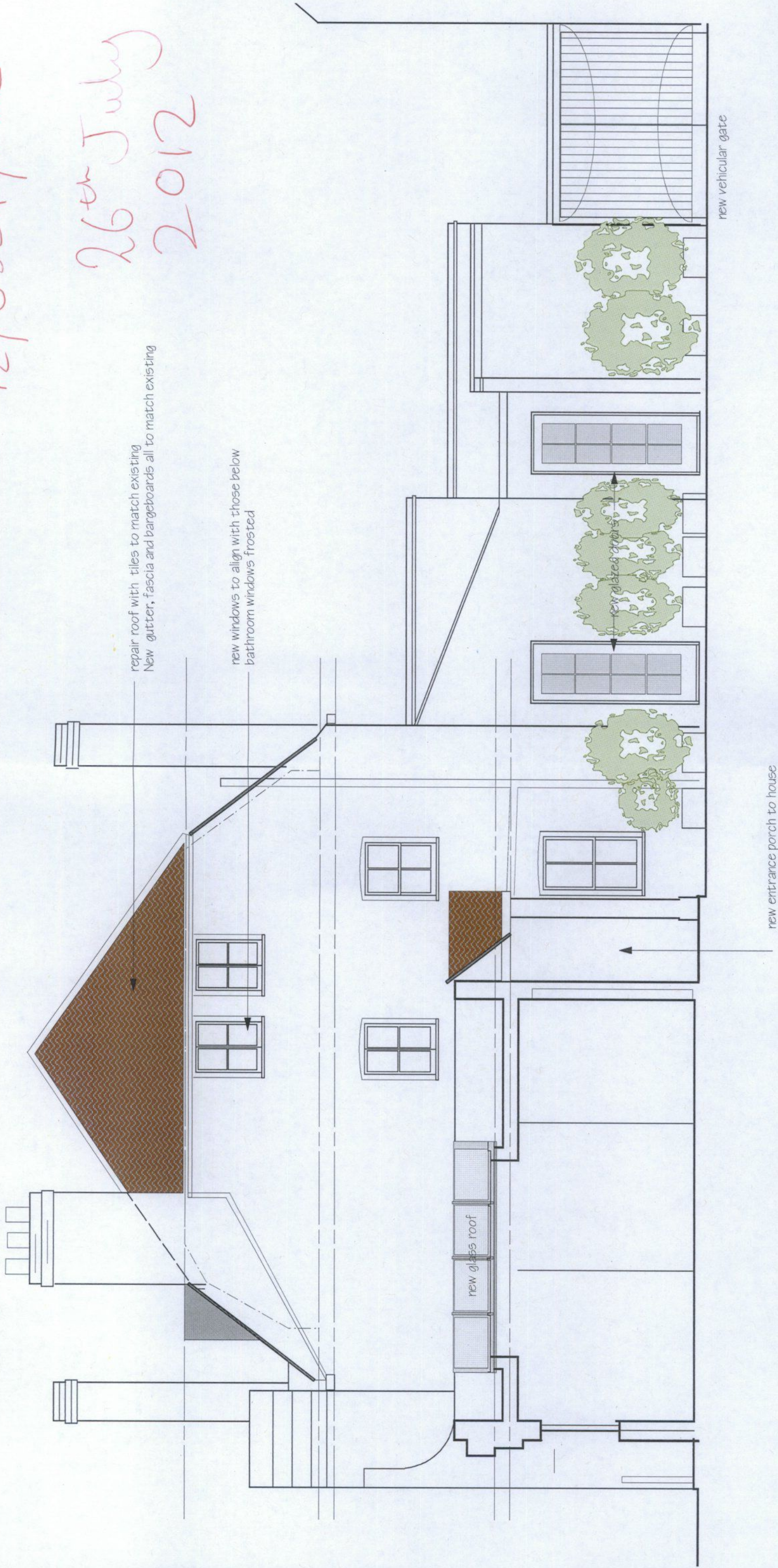
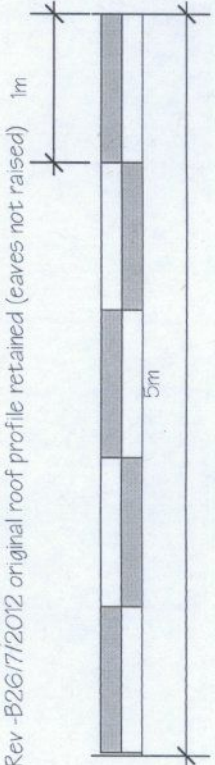


12/0524/FUL

26th July
2012



Rev -A 3/4/2012 photovoltaics and rainwater butt shown
Rev -B 26/7/2012 original roof profile retained (eaves not raised)



PROJECT: ROYAL OAK, HAM, SURREY TW10 7HN

DRAWING: PROPOSED SIDE ELEVATION/ CROSS SECTION SCALE 1:50

Job No. 736

Dwg No. 203

Revision No.-B

Date May 2012



Architecture + Interiors

T: 07984
069145

81 South Worple Way, London SW14 8NG
veronicacongdon@blueyonder.co.uk