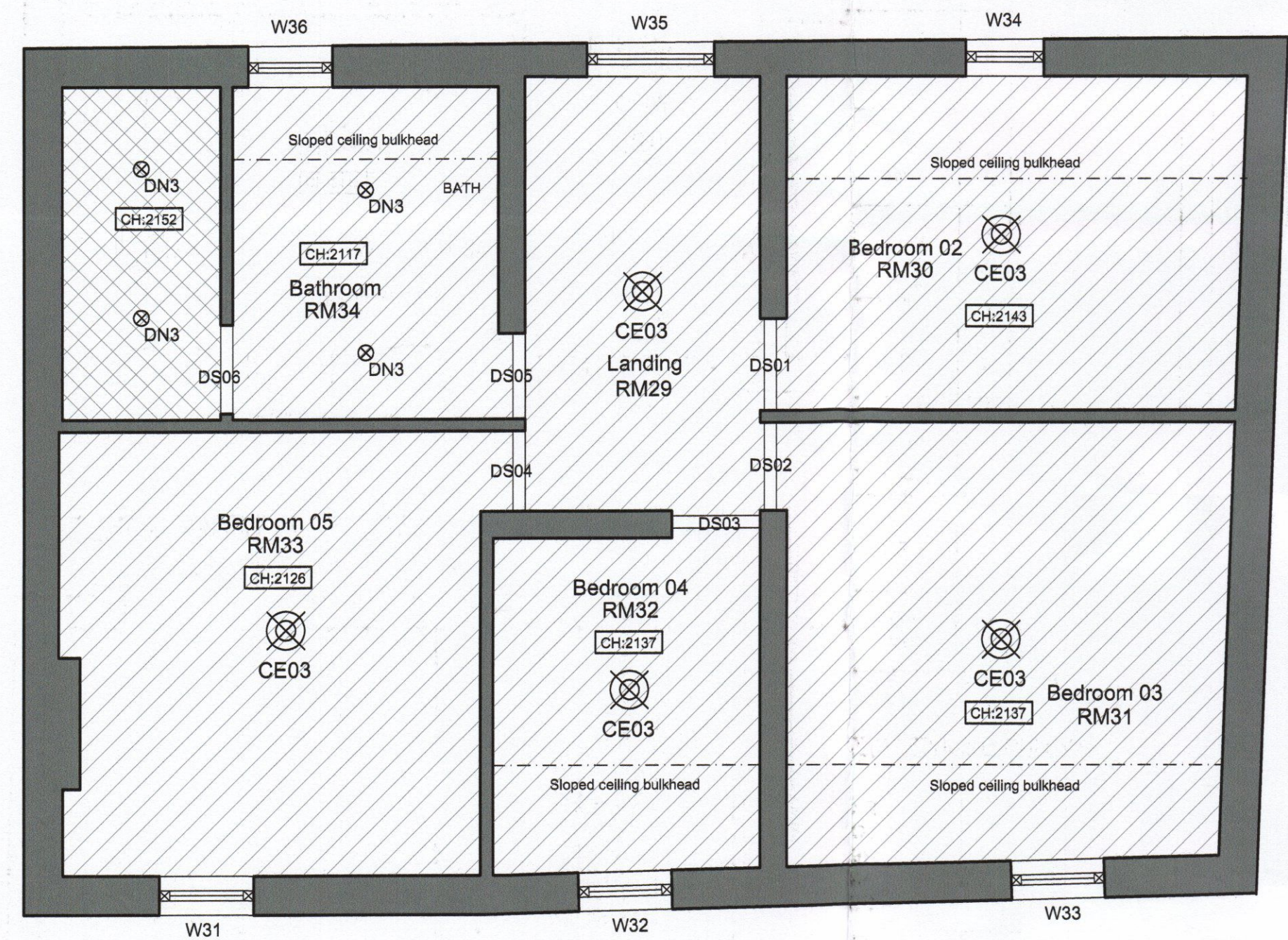
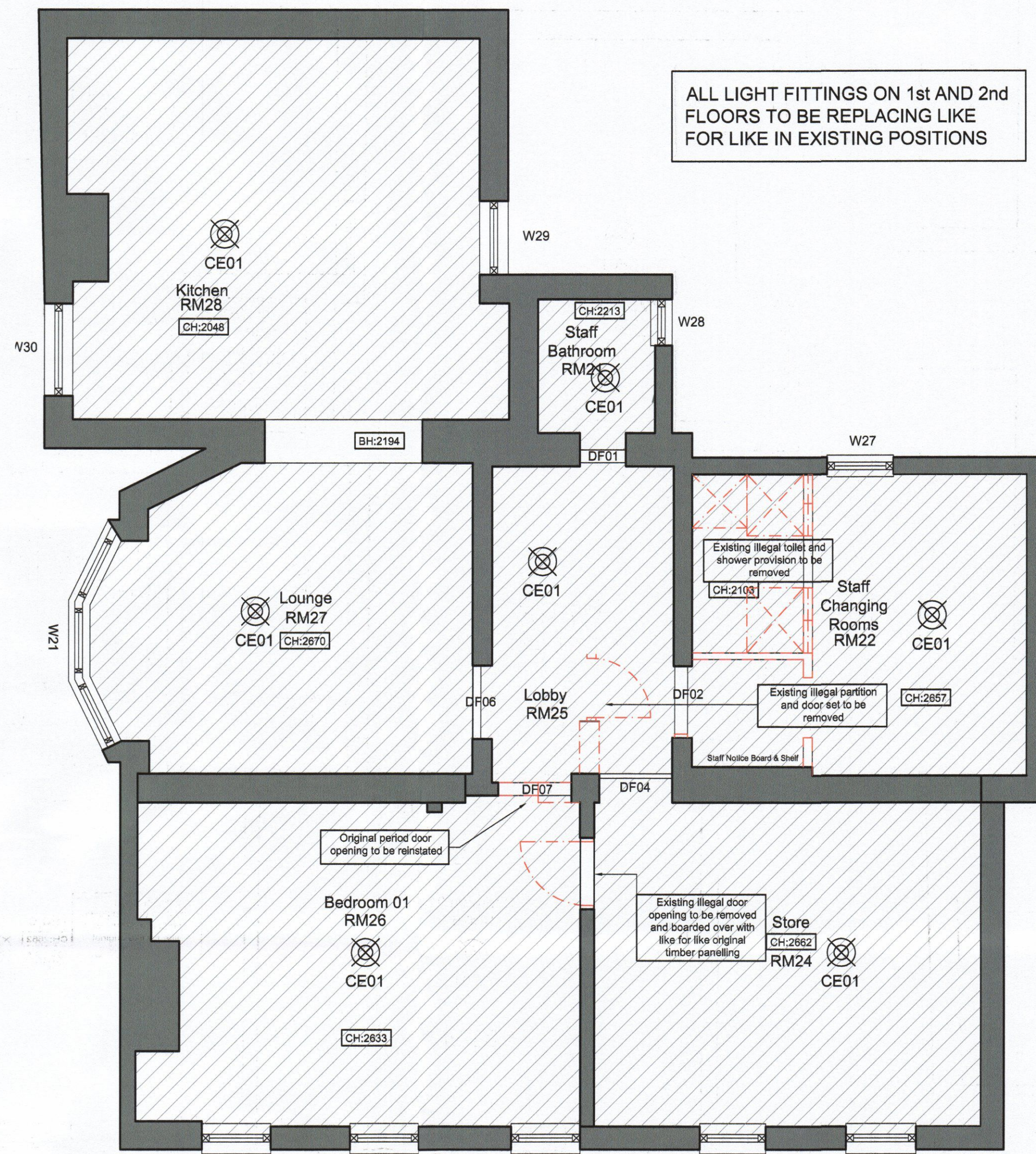
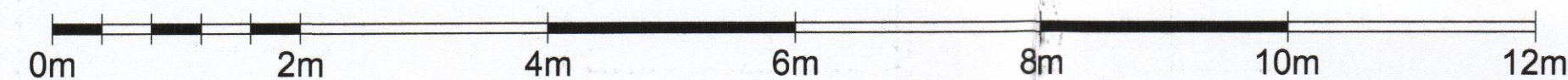


BASEMENT FLOOR PLAN. 1:50 @ A1



SECOND FLOOR PLAN. 1:50 @ A1



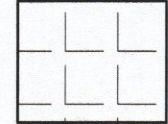


FIRST FLOOR PLAN. 1:50 @ A1

ALL LIGHT FITTINGS ON 1st AND 2nd FLOORS TO BE REPLACING LIKE FOR LIKE IN EXISTING POSITIONS

LIGHTING - REFER TO SCHEDULE		
QTY	SYMBOL	LIGHTING SCHEDULE
4	PM	PENDANT - ABOVE BAR
4	PM	PENDANT - HALL
18	DN1	RECESSED LV DOWNLIGHTER
3	DN2	RECESSED DOWNLIGHTER (GIMBLE - AR60)
39	DN3	RECESSED DOWNLIGHTER (ELECTRICIAN SPEC - BOH)
9	TR1	SURFACE MOUNTED TRACK SYSTEM - FINISH TBC HALOGEN BULBS ON GIMBLE FITTINGS. REFER TO LIGHTING SCHEDULE
6	DN4	RECESSED DOWNLIGHTER INTO BACK-BAR BULKHEAD
2	CE01	SURFACE MOUNTED CEILING LIGHT (BULKHEAD LIGHT)
7	CE02	INTEGRATED CEILING LIGHT INTO KITCHEN LAY-IN GRID
4	WL1	FEATURE WALL LIGHT
22	WL2	FEATURE WALL LIGHT
5	WL3	FEATURE WALL LIGHT
10	WL4	FEATURE WALL LIGHT
7	WL5	FEATURE WALL LIGHT
9	WL6	FEATURE WALL LIGHT
6	WL7	FEATURE WALL LIGHT (MALE W.C.)
2	WL7	FEATURE WALL LIGHT (FEMALE W.C.)
2	EX1	EXTERNAL WALL LIGHT
8	EX2	EXTERNAL WALL LIGHT
5	CE03	PENDANT LIGHT FITTING (STAFF BEDROOMS - ELECTRICIAN SPEC)

CEILING FINISHES - GROUND FLOOR

-  EXISTING CEILING RETAINED. MADE GOOD LOCALLY WHERE EXISTING FITTINGS REMOVED. ALLOW FOR NEW PAINT FINISH AND NEW LIGHT FITTINGS - REFER TO SCHEDULES.
-  ALLOW FOR NEW LATHE AND PLASTER CEILING WHERE NEW CEILINGS INSTALLED. PAINTED FINISH. REFER TO FINISH SCHEDULE. (NOTE: CELLAR TO BE 1 HOUR FIRE RATED PB) (NOTE: SECOND FLOOR - ORIGINAL LATHE AND PLASTER CEILING INSTALLED)
-  ALLOW FOR NEW HYGENIC LAY-IN GRID CEILING TILE TO KITCHEN.

© copyright  
This drawing, design & all information contained herein remains the sole copyright of BGW DESIGN STUDIO & reproduction in any form is strictly forbidden unless permission is obtained in writing.

NOTES:  
- Do not scale from this drawing, all dimensions must be checked on site. The contractor must verify all site dimensions, drawings, details & specifications. Any discrepancies must be reported to BGW DESIGN STUDIO prior to any commencement of work.  
- Figured dimensions to take preference over those scaled.  
- All specified items are to be installed in accordance with the manufacturers recommendations & instructions.

COVERS:  
INTERNAL - 150  
EXTERNAL - 32

GROUND FLOOR AREA :  
TOTAL: 370m2  
TRADE SPACE: 241.7m2  
KITCHEN / BAR AND W.Cs: 128.3m2

TOTAL SITE DEMISE :  
TOTAL: 1347m2

DENOTES DEMOLITION

RECEIVED  
15 OCT 2012

rev	date	note	init.
C	11.10.2012	Issued For Planning	BW
B	23.07.2012	General Revision - builders works added	BW
A	27.04.2012	General Revision - builders works added	BW
-	13.04.2012	Issued For Planning	BW

Stage: **PLANNING**

Client: **RB&AH LTD**

Project: **THE CROWN, 174 RICHMOND ROAD, TWICKENHAM, MIDDLESEX, TW1 2NH**

Title: **PROPOSED CEILING PLAN - BASEMENT, 1ST & 2ND FLOORS**

Scale: 1:50 @ A1      Dwg size: A1

Drawn: SWH      Date: MARCH 12

Drawing No. P1169-12      Revision: C

**BGW DESIGN STUDIO**

South Yorkshire  
Palmer Street  
Hyde Park  
Doncaster  
DN4 5DD

Studio: 01302 361 024  
Fax: 01302 321 343  
www.bgwdesignstudio.com

LONDON  
First Floor  
107 Cheapside  
London  
EC2V 6DN

Studio: 020 7611 4947