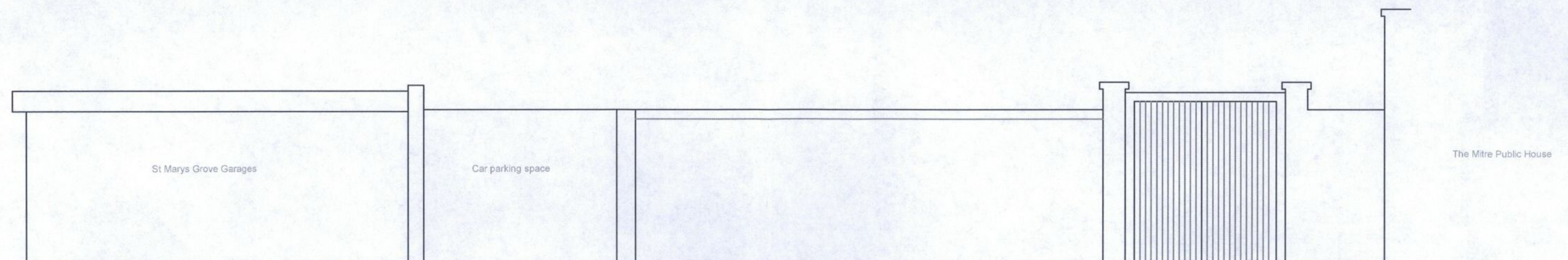


EXISTING SOUTHERN SIDE ELEVATION



PROPOSED SIDE (SOUTH) ELEVATION

THE MITRE PUBLIC HOUSE,  
ST MARYS GROVE, RICHMOND,  
SURREY,  
EXISTING AND PROPOSED SIDE  
ELEVATIONS  
Rev: A  
17/12/2012  
SS/RC105/02  
SCALE: 1:50

Shaw and Company  
9-11 The Quadrant,  
Richmond,  
TW9 1BP