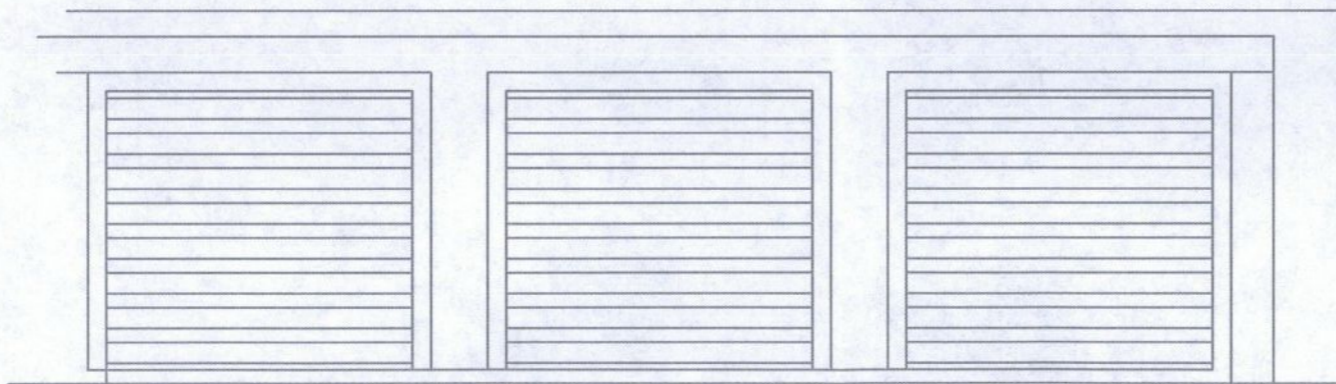


RECEIVED  
- 4 JAN 2013  
PLANNING

13 / 0070 / FUL



EXISTING REAR (WEST) ELEVATION



PROPOSED REAR (WEST) ELEVATION

THE MITRE PUBLIC HOUSE,  
ST MARYS GROVE, RICHMOND,  
SURREY,  
EXISTING AND PROPOSED REAR  
ELEVATIONS

Rev: A

17/12/2012

SS/RC105/03

SCALE: 1:50

Shaw and Company  
9-11 The Quadrant,  
Richmond,  
TW9 1BP