

Tree Images



● *Acer platanoides* Columnare



● *Carpinus betulus* 'Frans Fontaine'



● *Corylus colurna*



● *Cornus mas*



● *Pinus nigra*



● *Tilia cordata* 'Greenspire'



● *Carpinus betulus* (pleached)



● *Amelanchier lamarckii*



● *Crataegus prunifolia*

Plan

1:500

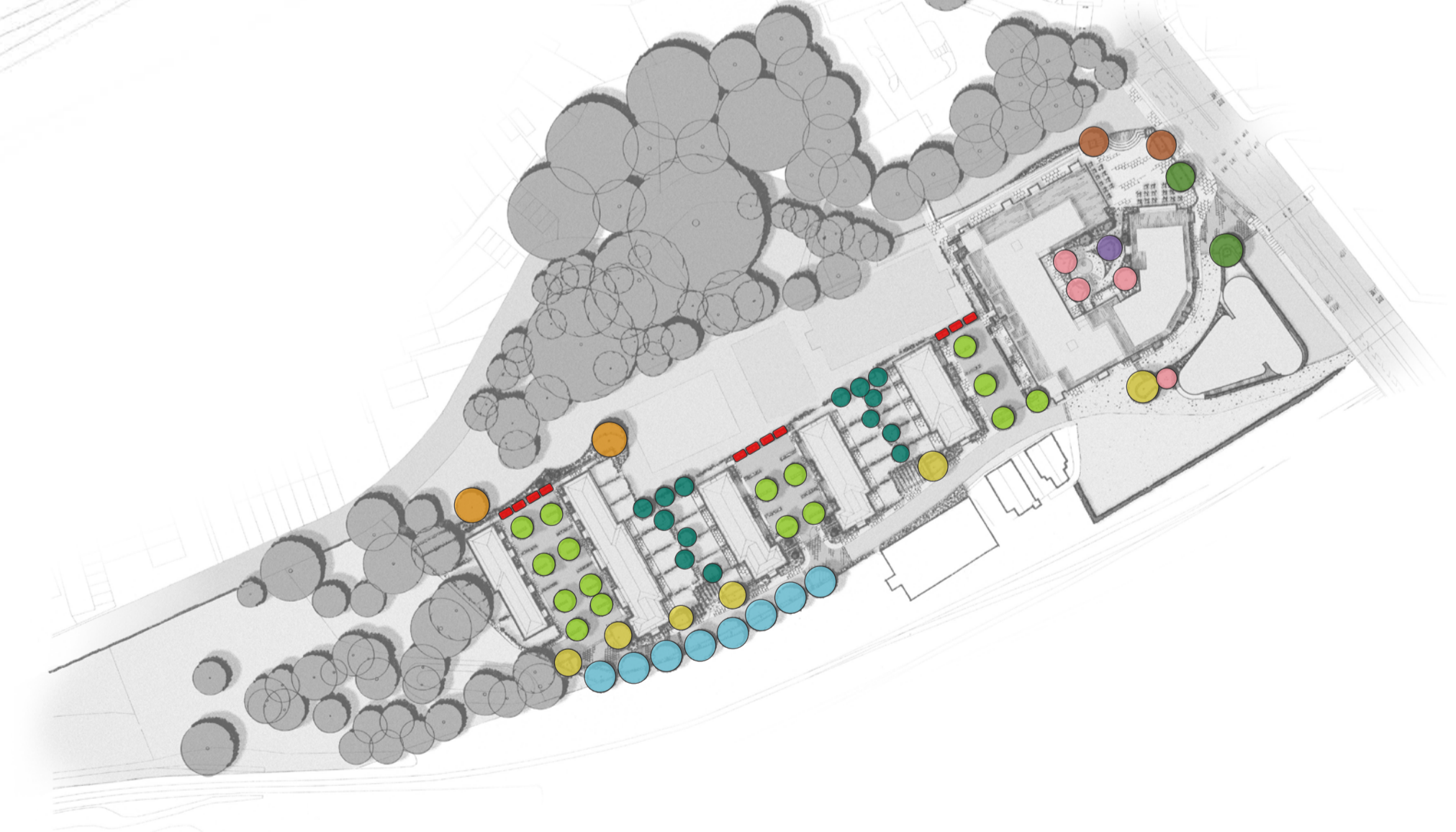


Legend

- Existing trees
- Proposed trees
- Shrub planting
- Hedging
- Climbers to fence/wall
- Private grass
- Amenity grass
- Bitumen macadam
- Granite flag paving
- Tegula block paving
- Gravel surface dressing
- Timber decking
- Granite set rumble strip
- Porous block paving
- Boundary line



Tree Location Plan



Tree Schedule

Proposed Trees & Multi-stems

● <i>Amelanchier lamarckii</i> (multi stem umbrella, 2-3m spread)	3-3.5m high
● <i>Acer platanoides</i> Columnare	25-30cm girth
● <i>Carpinus betulus</i> (Pleached)	20-25cm girth
● <i>Carpinus betulus</i> 'Frans Fontaine'	20-25cm girth
● <i>Corylus colurna</i>	20-25cm girth
● <i>Crataegus prunifolia</i> (multi stem umbrella, 3-4m spread)	3.5-4m high
● <i>Cornus mas</i> (multi stem umbrella, 3-4m spread)	3.5-4m high
● <i>Pinus nigra</i> (standard)	25-30cm girth
● <i>Tilia cordata</i> 'Greenspire'	40-45cm girth

Trees for Rear Gardens

● <i>Acer campestre</i>	10-12cm girth
● <i>Crataegus laevigata</i>	10-12cm girth
● <i>Malus sylvestris</i>	10-12cm girth
● <i>Prunus avium</i>	10-12cm girth
● <i>Prunus padus</i>	10-12cm girth
● <i>Sorbus aria</i>	10-12cm girth
● <i>Sorbus aucuparia</i>	10-12cm girth