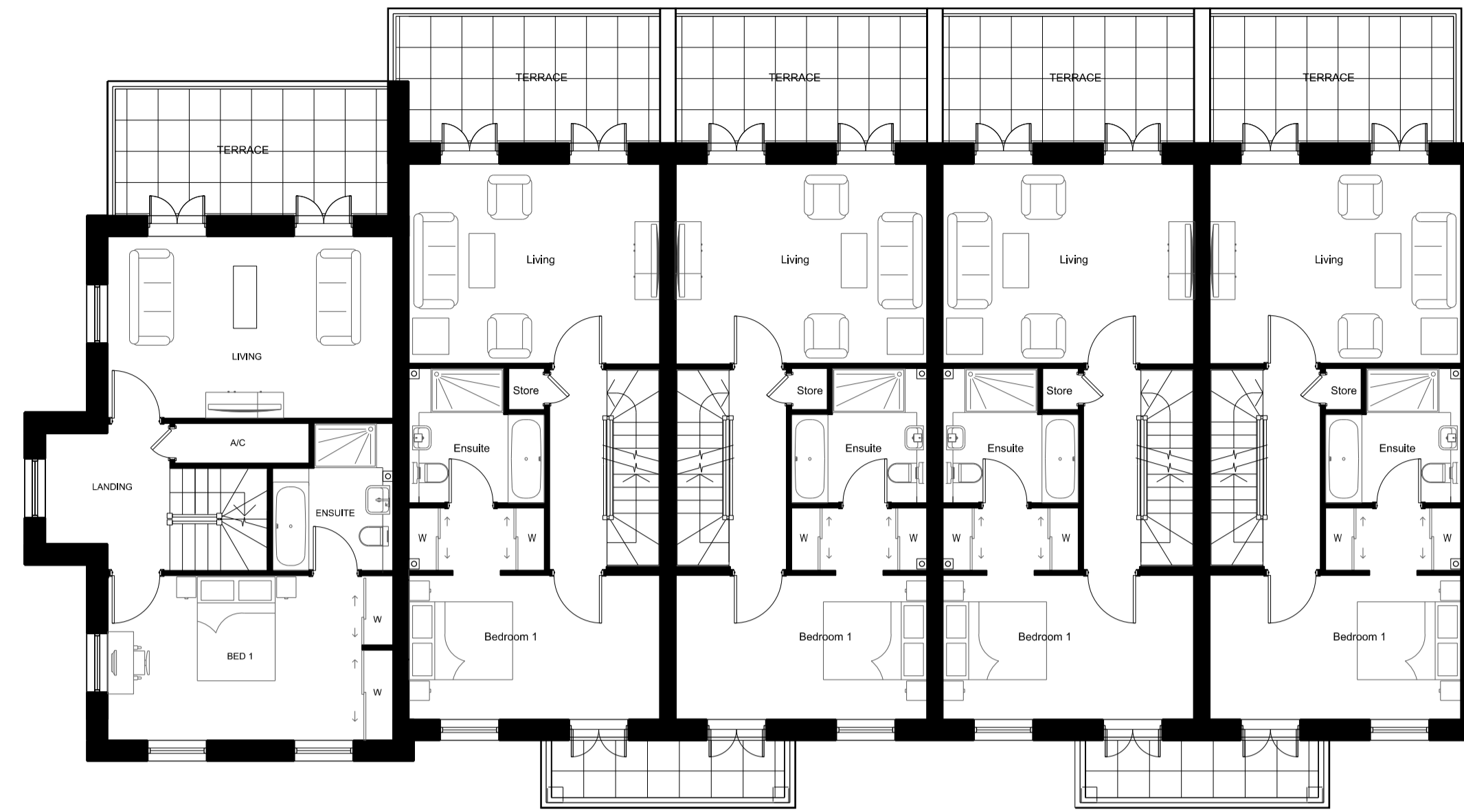
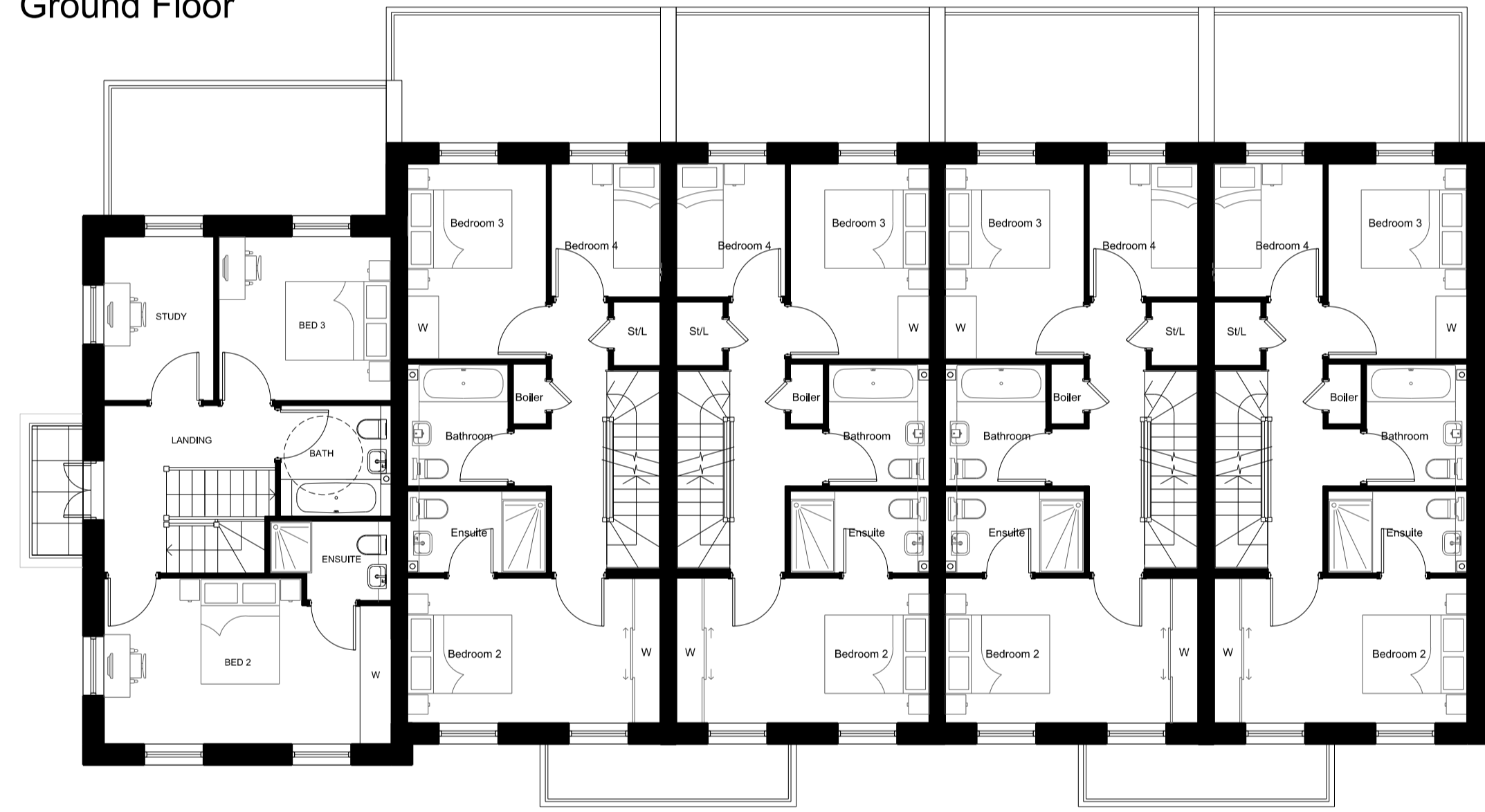




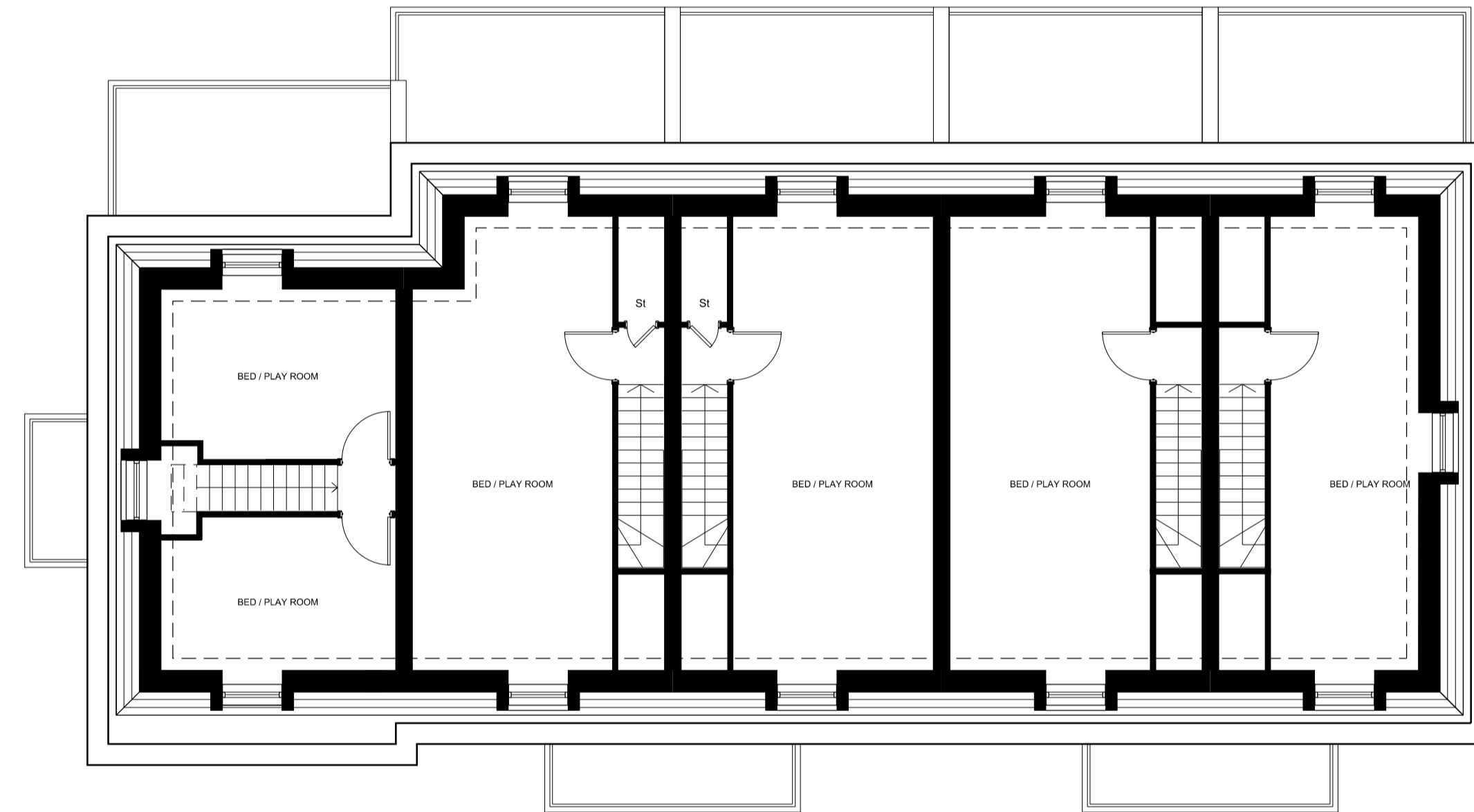
Ground Floor



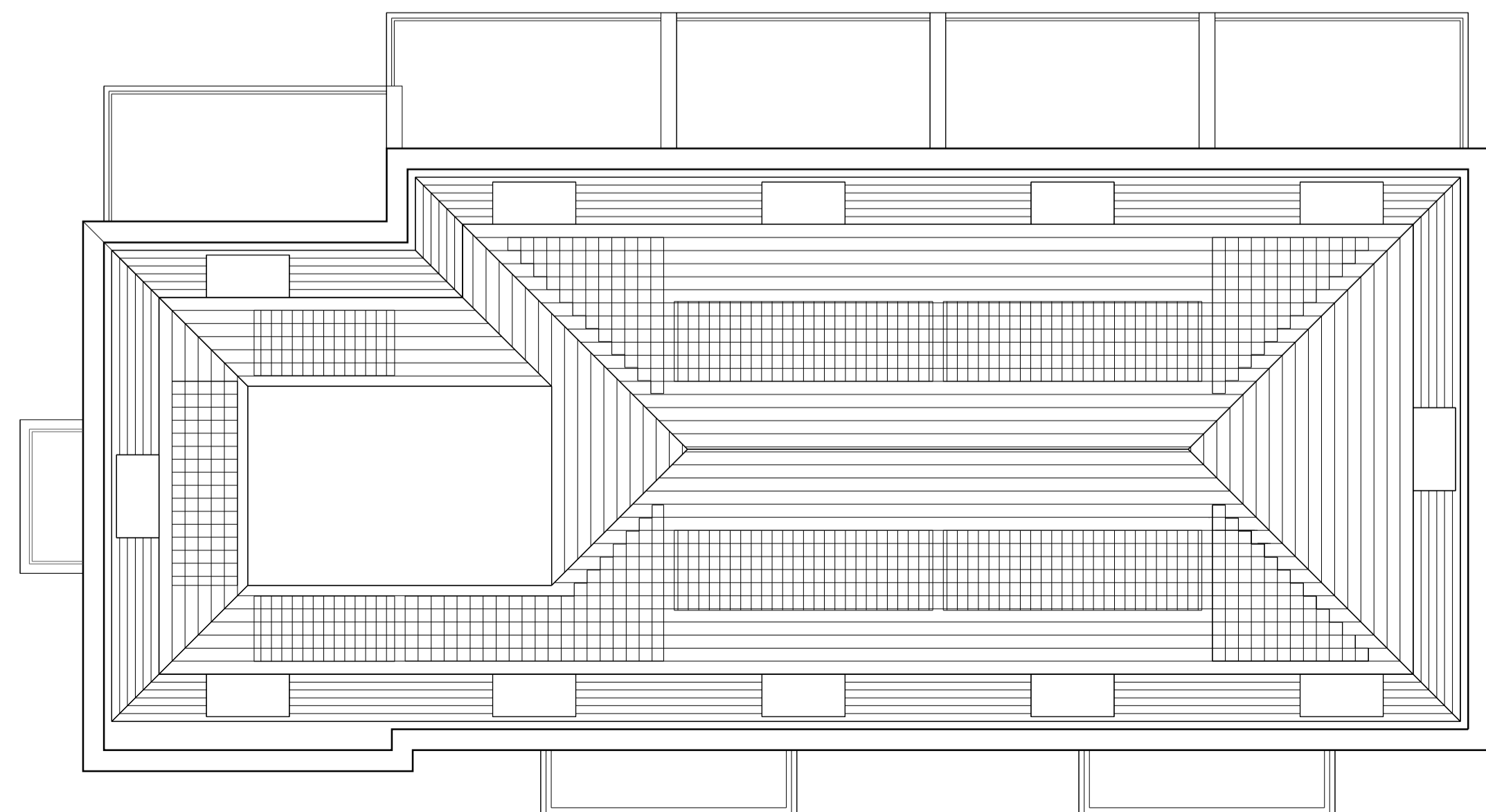
First Floor



Second Floor



Third Floor



Roof Plan

Notes:  
Do not scale from this drawing.  
All contractors must visit the site and be responsible for taking and checking Dimensions.  
All construction information should be taken from figured dimensions only.  
Any discrepancies between drawings, specifications and site conditions must be brought to the attention of the supervising officer.  
This drawing & the works depicted are the copyright of John Thompson & Partners.

This drawing is for planning purposes only. It is not intended to be used for construction purposes, whilst all reasonable efforts are used to ensure drawings are accurate, John Thompson & Partners accept no responsibility or liability for any reliance placed on, or use made of, this plan by anyone for purposes other than those stated above.

Key

House Type A1 = 207 sq.m. ; 2228 sq.ft.  
House Type A2 = 208 sq.m. ; 2238 sq.ft.  
House Type A3 = 199 sq.m. ; 2142 sq.ft.  
House Type B1 = 210 sq.m. ; 2260 sq.ft.

P1 24.08.12 Planning Submission RA IF

Rev | Date | Description | Drawn | Chkd

Drawing Status

Planning

Client

St. James Group Ltd

**St James**  
Designed for life

JOHN THOMPSON & PARTNERS

**jtp** 23-25 Great Sutton Street  
London, EC1V 0DN  
T: +44 (0)20 7017 1780  
F: +44 (0)20 7017 1781  
W: www.jtp.co.uk

Project

The Former Royal Mail  
Sorting Office, Twickenham

Drawing Title

Terrace A/B - Plans  
(Plot Nos. 1 - 5)

Scale @ A1 1:100 Job Ref. 00545

Drawing No. HT\_01 Revision P1

Scale Bar 0 1 2 3 4 5m

