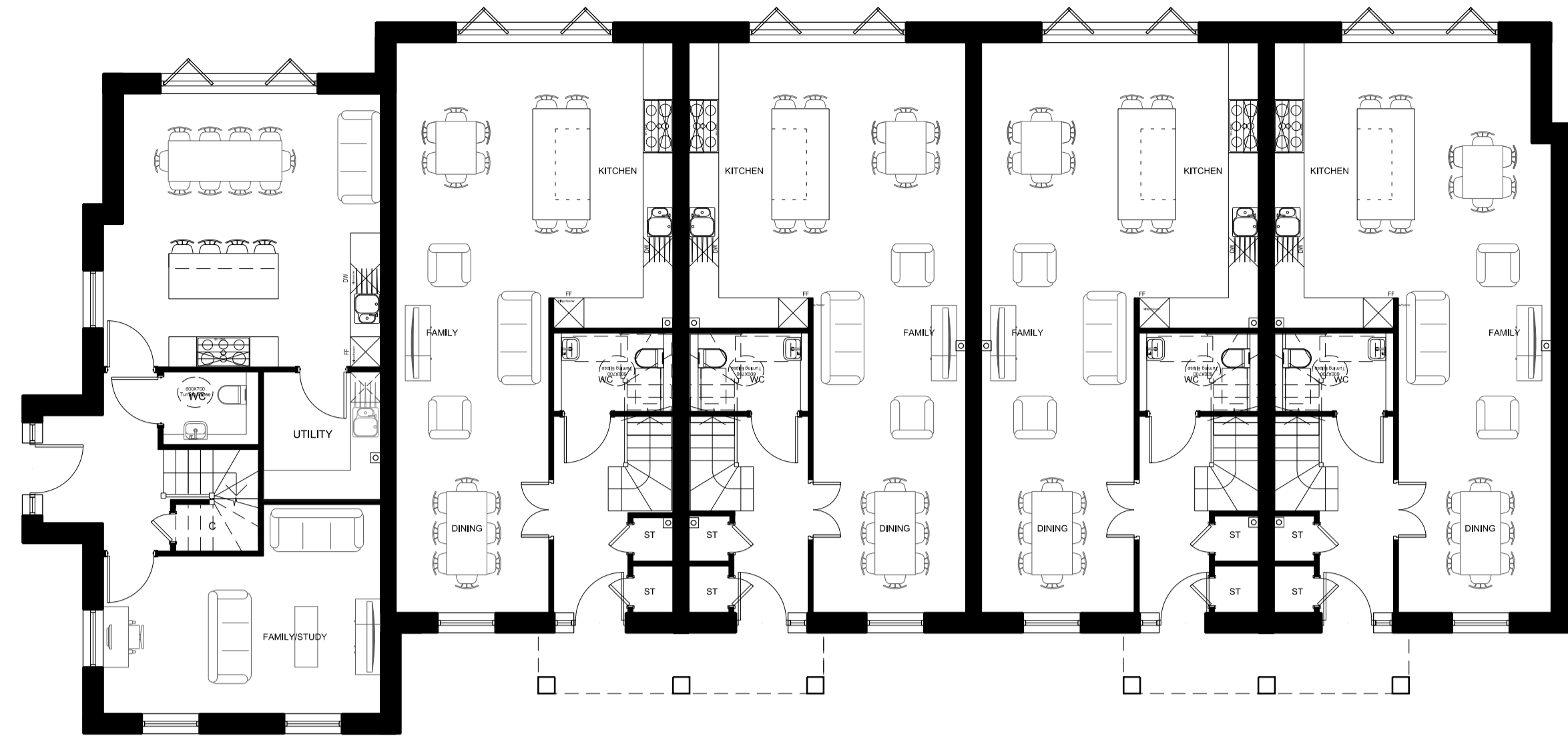


Notes:
 Do not scale from this drawing.
 All contractors must visit the site and be responsible for taking and checking Dimensions.
 All construction information should be taken from figured dimensions only.
 Any discrepancies between drawings, specifications and site conditions must be brought to the attention of the supervising officer.
 This drawing & the works depicted are the copyright of John Thompson & Partners.

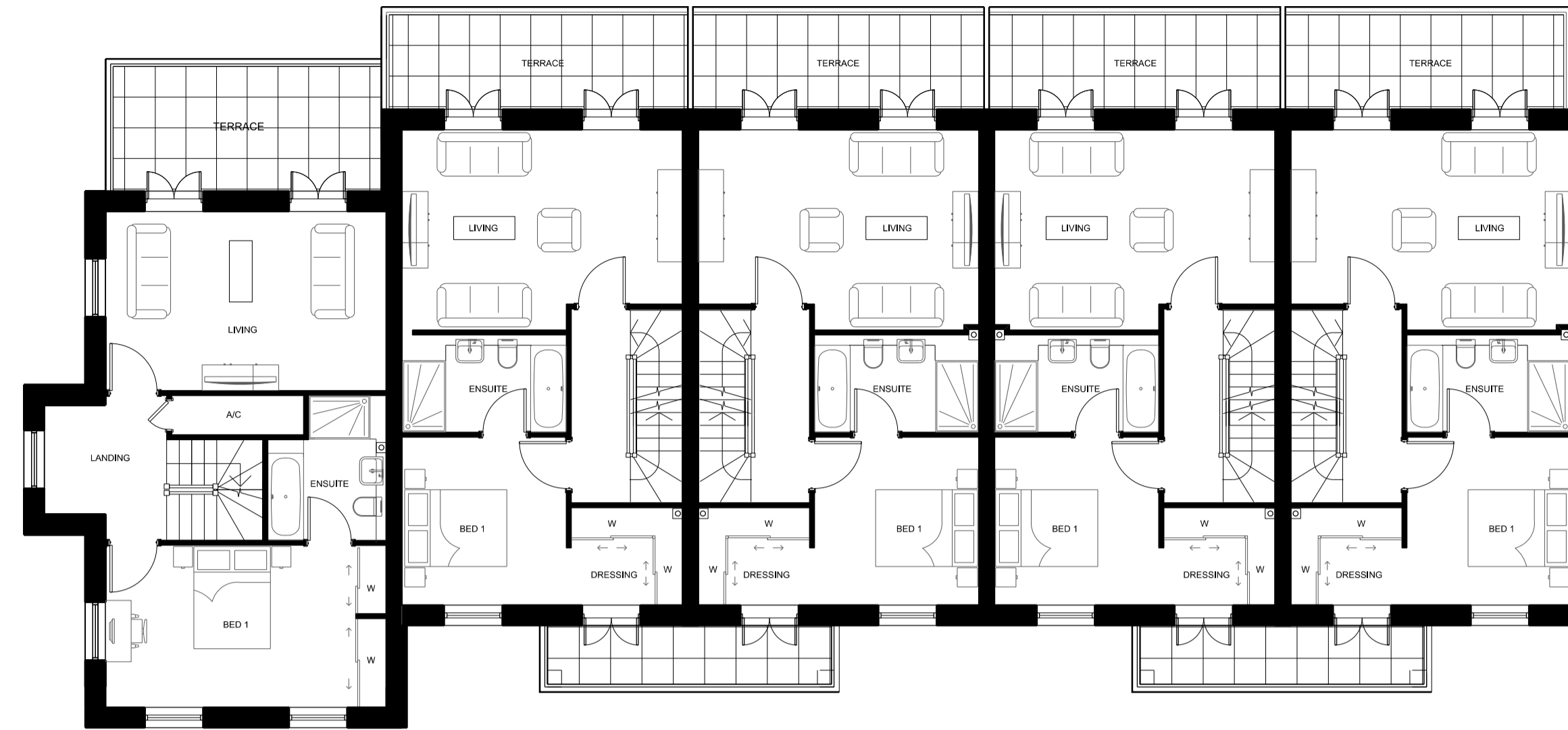
This drawing is for planning purposes only. It is not intended to be used for construction purposes, whilst all reasonable efforts are used to ensure drawings are accurate, John Thompson & Partners accept no responsibility or liability for any reliance placed on, or use made of, this plan by anyone for purposes other than those stated above.

Key

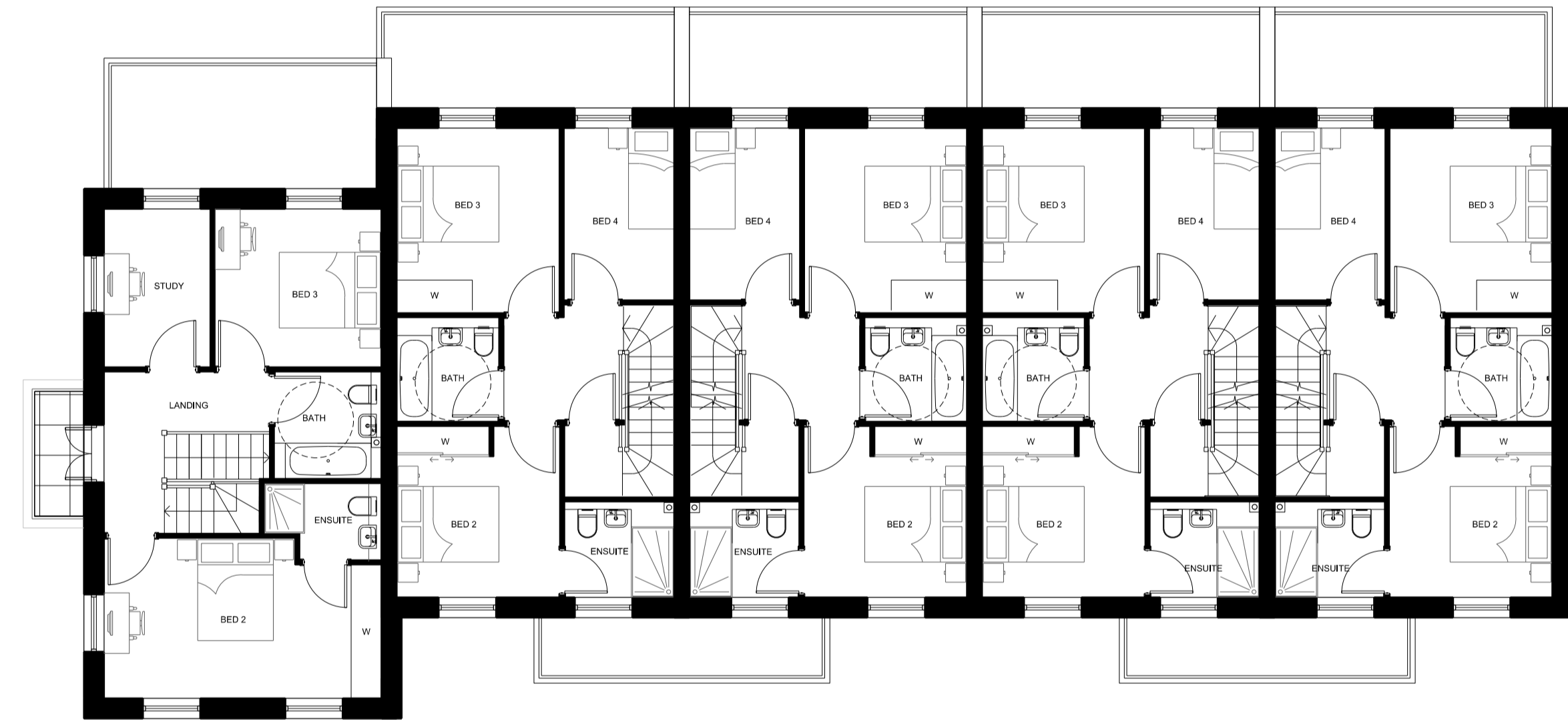


H. No. 6/15 House Type B2
 H. No. 7/14 House Type C1
 H. No. 8/13 House Type C2
 H. No. 9/12 House Type C2
 H. No. 10/11 House Type C3

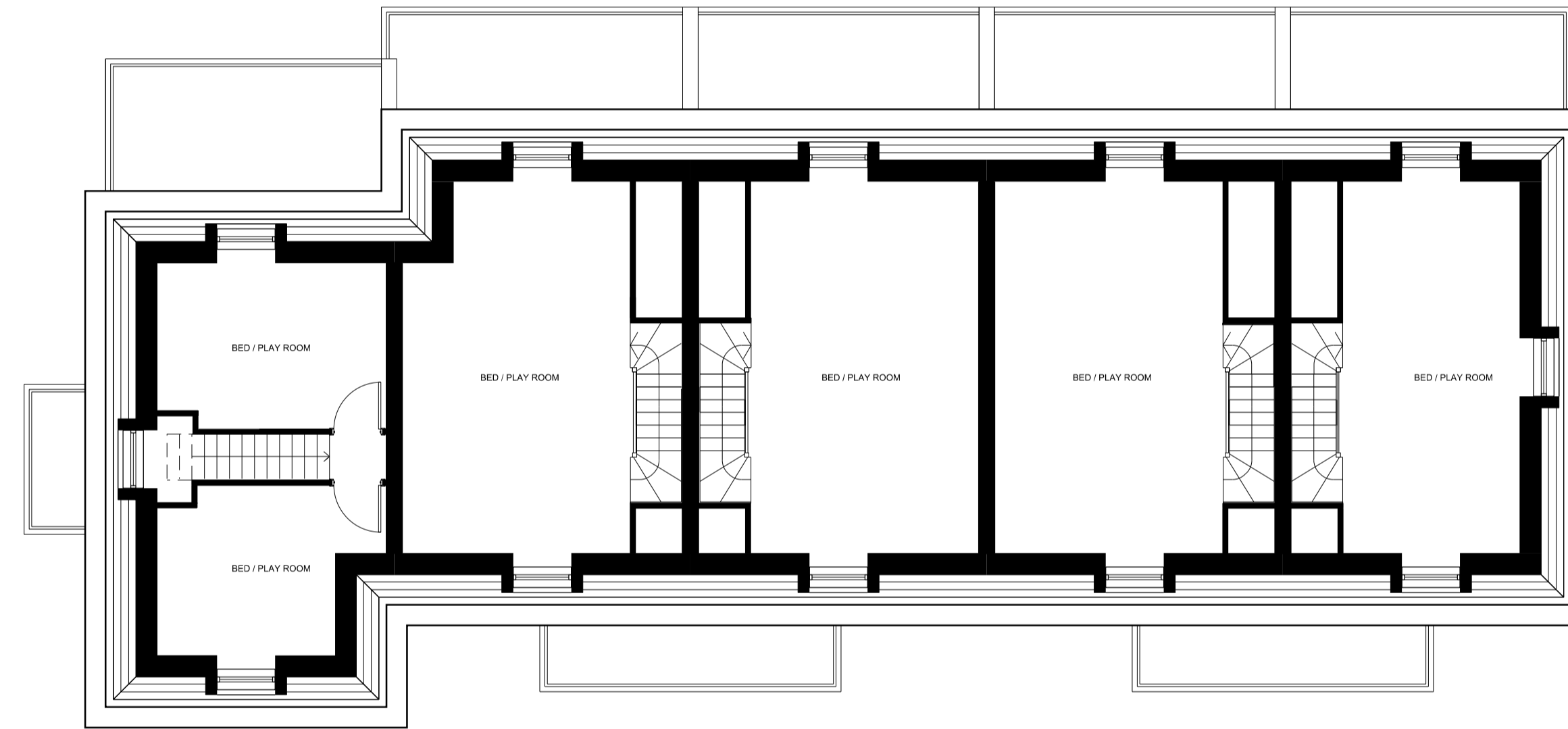
Ground Floor



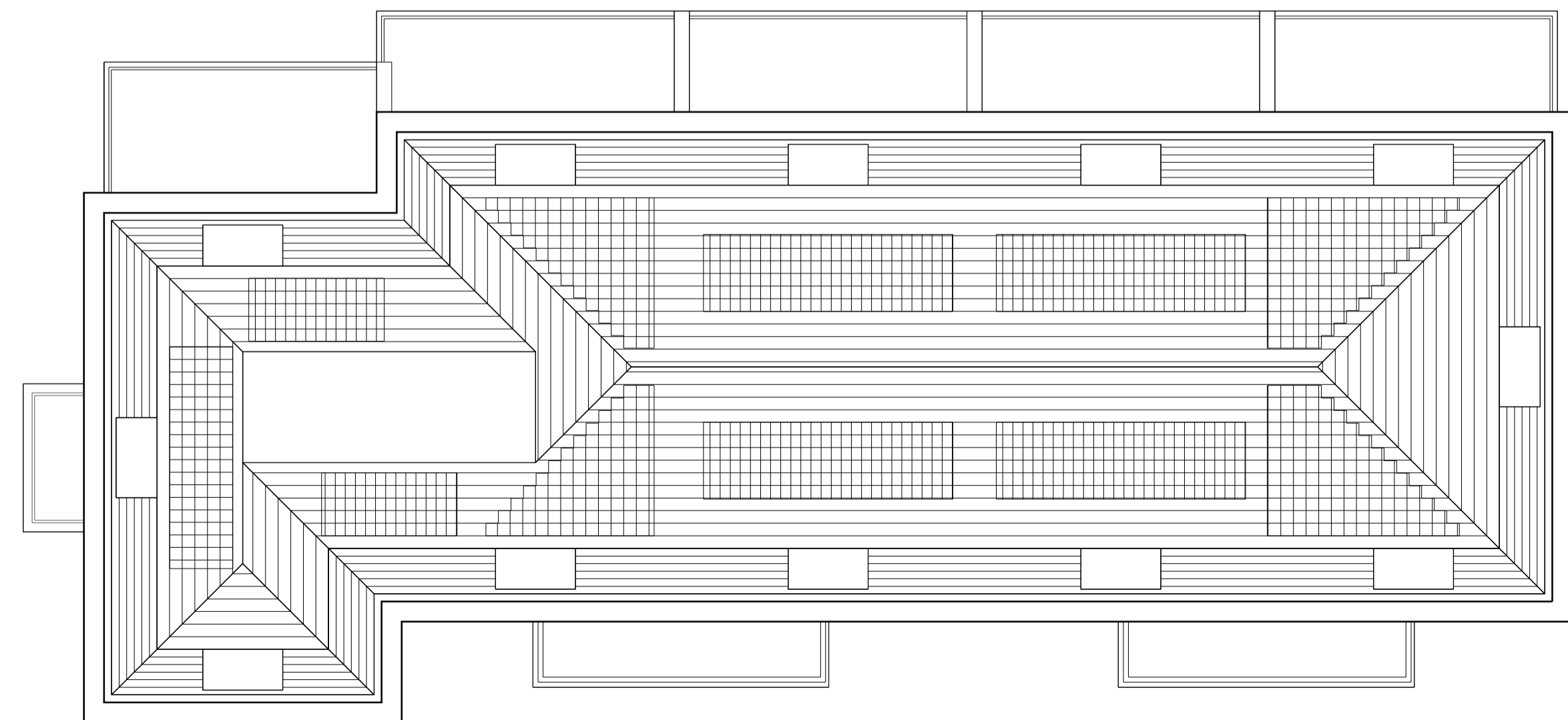
First Floor



Second Floor



Third Floor



Roof Plan

House Type B2 = 210 sq.m. ; 2260 sq.ft.
 House Type C1 = 203 sq.m. ; 2185 sq.ft.
 House Type C2 = 204 sq.m. ; 2195 sq.ft.
 House Type C3 = 197 sq.m. ; 2120 sq.ft.

P1 24.08.12 Planning Submission RA IF

Rev | Date | Description | Drawn | Chkd

Drawing Status

Planning

Client

St. James Group Ltd

St James
 Designed for life

JOHN THOMPSON & PARTNERS

jtp 23-25 Great Sutton Street
 London, EC1V 0DN
 T: +44 (0)20 7017 1780
 F: +44 (0)20 7017 1781
 W: www.jtp.co.uk

Project

The Former Royal Mail
 Sorting Office, Twickenham

Drawing Title

Terrace B/C - Plans
 (Plot Nos. 11-15 & 6-10 mirrored)

Scale @ A1 1:100 Job Ref. 00545

Drawing No. HT_03 Revision P1

Scale Bar 0 1 2 3 4 5m

