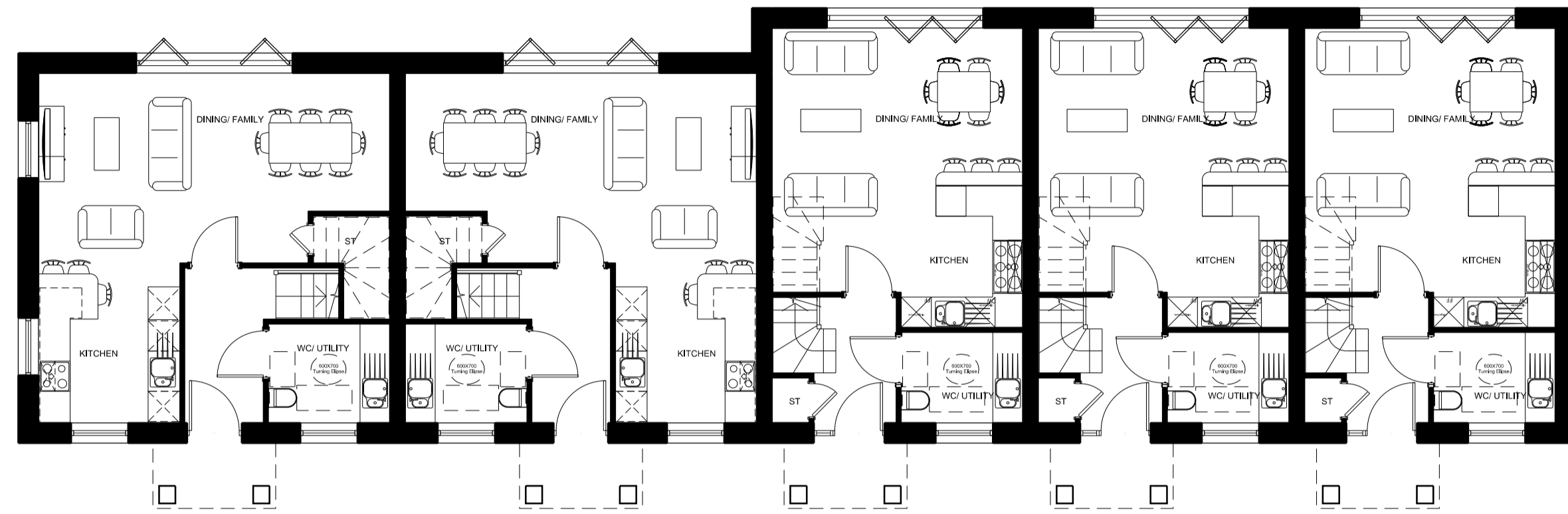


Notes:
 Do not scale from this drawing.
 All contractors must visit the site and be responsible for taking and checking Dimensions.
 All construction information should be taken from figured dimensions only.
 Any discrepancies between drawings, specifications and site conditions must be brought to the attention of the supervising officer.
 This drawing & and the works depicted are the copyright of John Thompson & Partners.

This drawing is for planning purposes only, it is not intended to be used for construction purposes, whilst all reasonable efforts are used to ensure drawings are accurate, John Thompson & Partners accept no responsibility or liability for any reliance placed on, or use made of, this plan by anyone for purposes other than those stated above.

Key



H. No. 28
House Type E

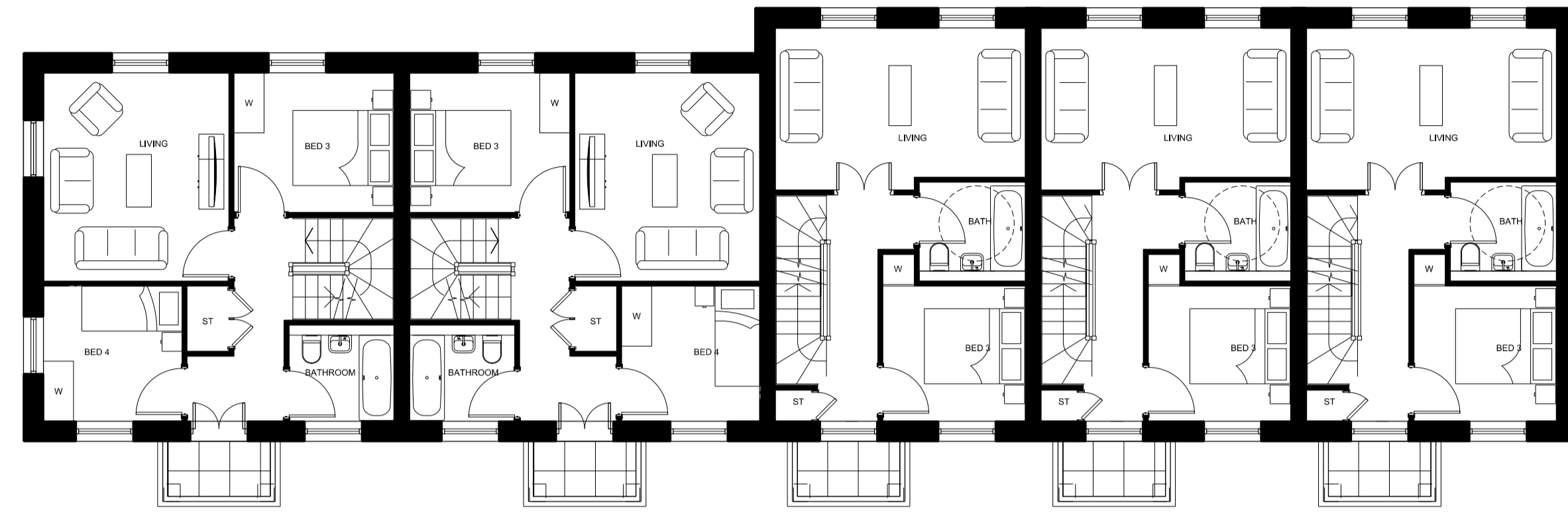
H. No. 27
House Type E

H. No. 26
House Type D

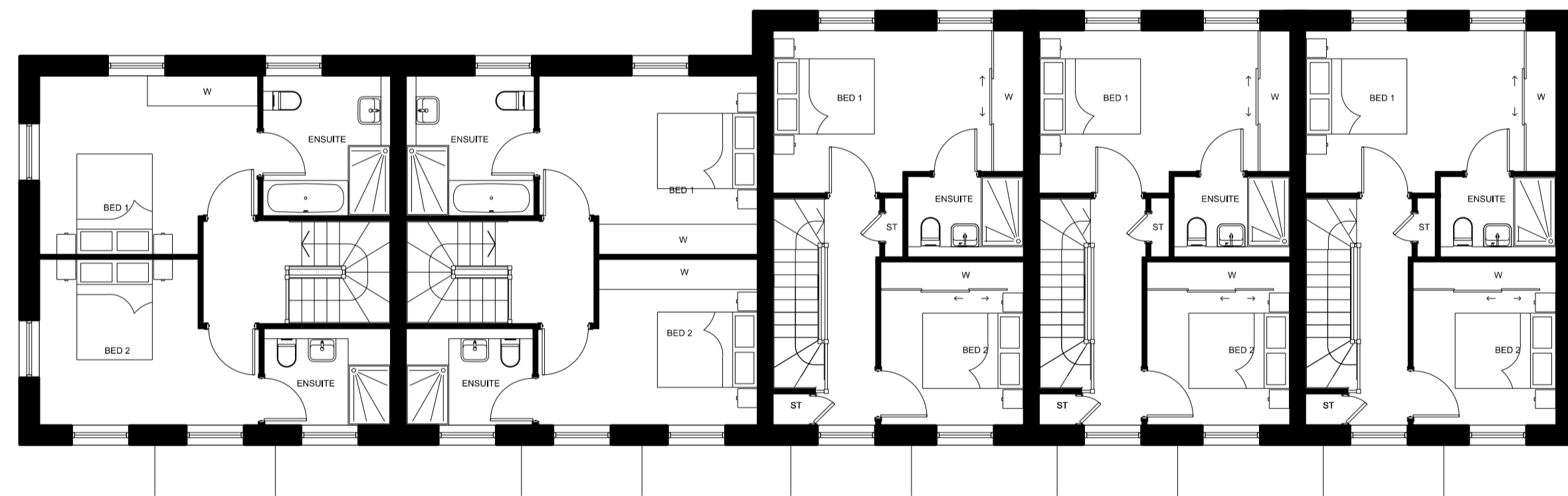
H. No. 25
House Type D

H. No. 24
House Type D

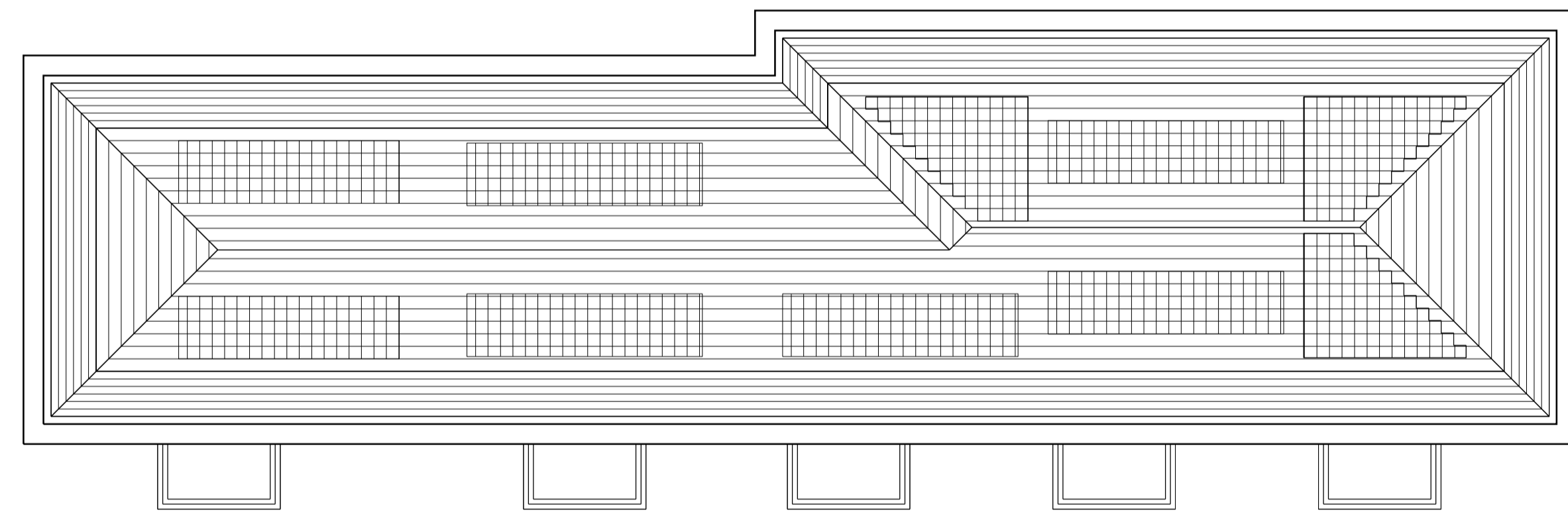
Ground Floor



First Floor



Second Floor



Roof Plan

House Type D = 117 sq.m. ; 1259 sq.ft.

House Type E = 144 sq.m. ; 1550 sq.ft.

P1 24.08.12 Planning Submission RA IF

Rev | Date | Description | Drawn | Chkd

Drawing Status

Planning

Client

St. James Group Ltd

St James
Designed for life

JOHN THOMPSON & PARTNERS

jtp 23-25 Great Sutton Street
London, EC1V 0DN
T: +44 (0)20 7017 1780
F: +44 (0)20 7017 1781
W: www.jtp.co.uk

Project

The Former Royal Mail
Sorting Office, Twickenham

Drawing Title

Terrace D/E - Plans
(Plot Nos. 24 - 28)

Scale @ A1 1:100 Job Ref. 00545

Drawing No. HT_08 Revision P1

Scale Bar 0 1 2 3 4 5m

