

Notes:
 Do not scale from this drawing.
 All contractors must visit the site and be responsible for taking and checking Dimensions.
 All construction information should be taken from figured dimensions only.
 Any discrepancies between drawings, specifications and site conditions must be brought to the attention of the supervising officer.
 This drawing & the works depicted are the copyright of John Thompson & Partners.

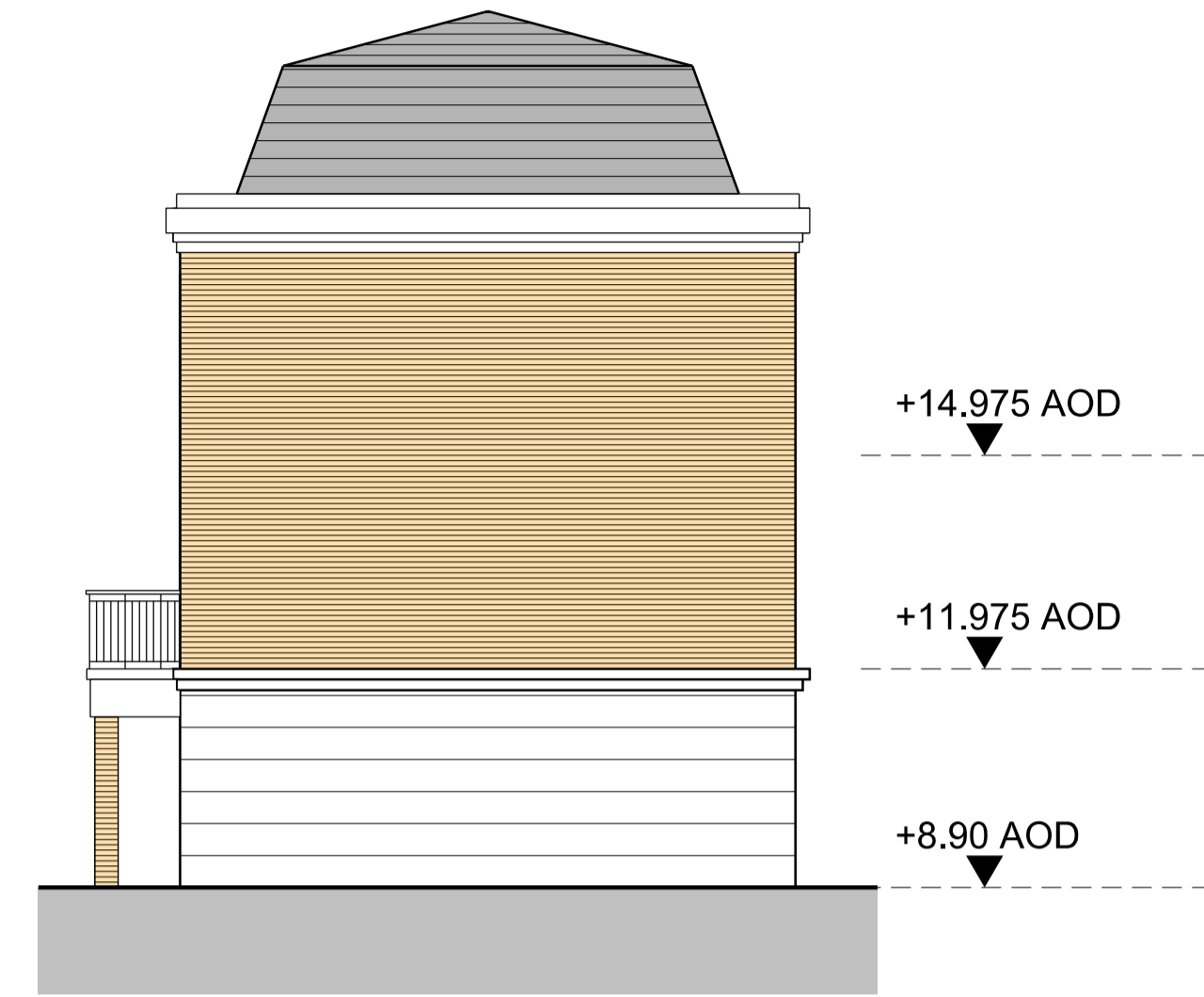
This drawing is for planning purposes only, it is not intended to be used for construction purposes, whilst all reasonable efforts are used to ensure drawings are accurate, John Thompson & Partners accept no responsibility or liability for any reliance placed on, or use made of, this plan by anyone for purposes other than those stated above.

Key

1. Yellow London Stock brick
2. Yellow facing brick
3. Orange stock facing brick
4. Charcoal grey facing brick
5. Metal Cladding System
6. Photogravure white concrete slabs
7. White through-colour render system
8. Bottle green colour glazed brick
9. Re-con stone banding
10. Re-con stone coping
11. Slate roof
12. Lead-lined dormer window
13. Double glazed windows RAL 7009
14. Double glazed windows RAL 7005
15. White colour double glazed windows
16. Metal balcony with glass balustrade RAL
17. Metal balcony with vertical metal railed-balustrade RAL 7005
18. Pressed metal coping RAL 7009
19. Steel lintel detail RAL 7009
20. White feature lettering
21. Stainless steel light fitting
22. Round-section rwp's black
23. Grey colour rwp's to match windows
24. Grey colour cladding panels
25. Curtain-wall glazing



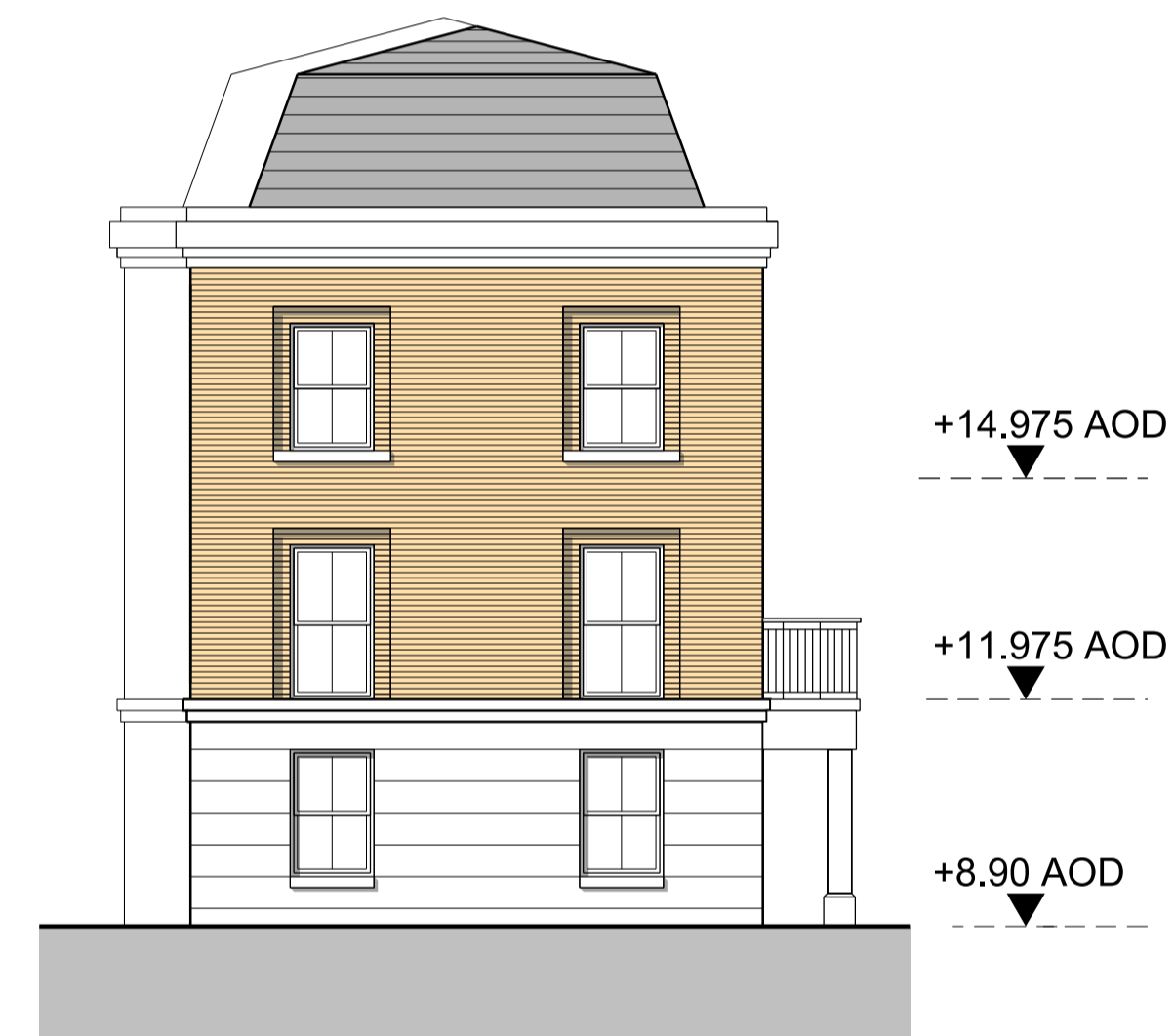
East Elevation



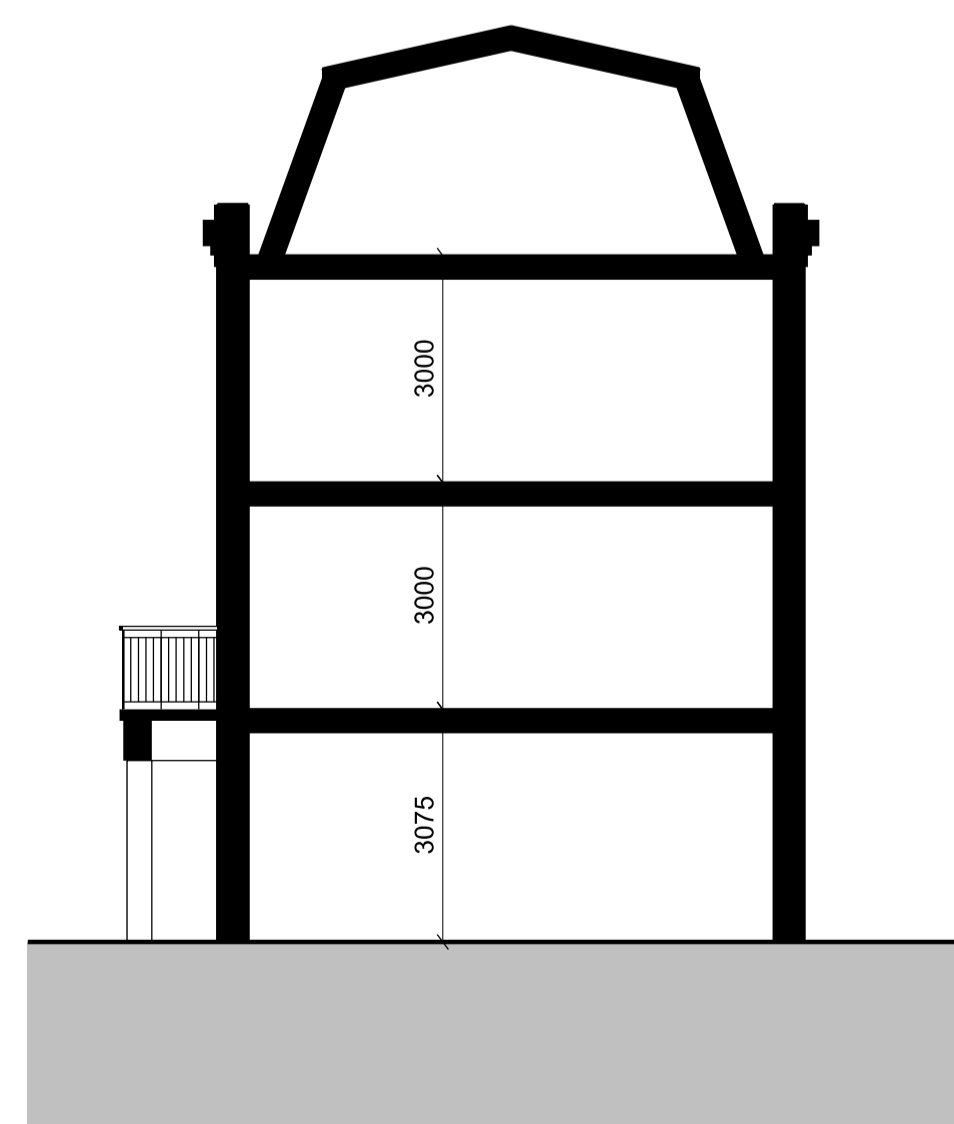
North Elevation



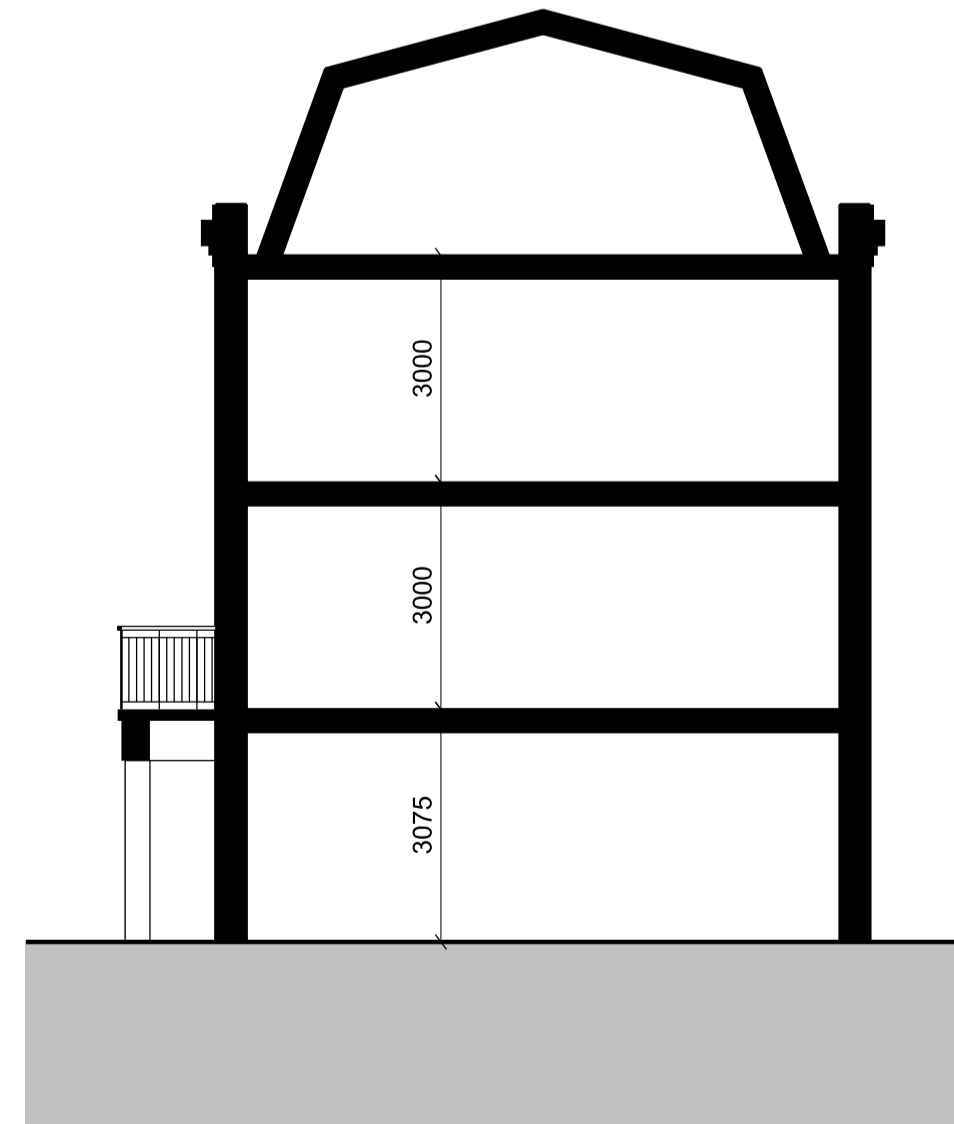
West Elevation



South Elevation



House Type D Section



House Type E Section

P1 16.11.12 Planning Submission RA IF

Rev	Date	Description	Drawn	Chkd

Drawing Status

Planning

Client

St. James Group Ltd

JOHN THOMPSON & PARTNERS



Project

The Former Royal Mail
 Sorting Office, Twickenham

Drawing Title

Terrace D/E - Elevations &
 Sections (Plot Nos. 24 - 28)

Scale @ A1 1:100 Job Ref. 00545

Drawing No. HT_09 Revision P1

