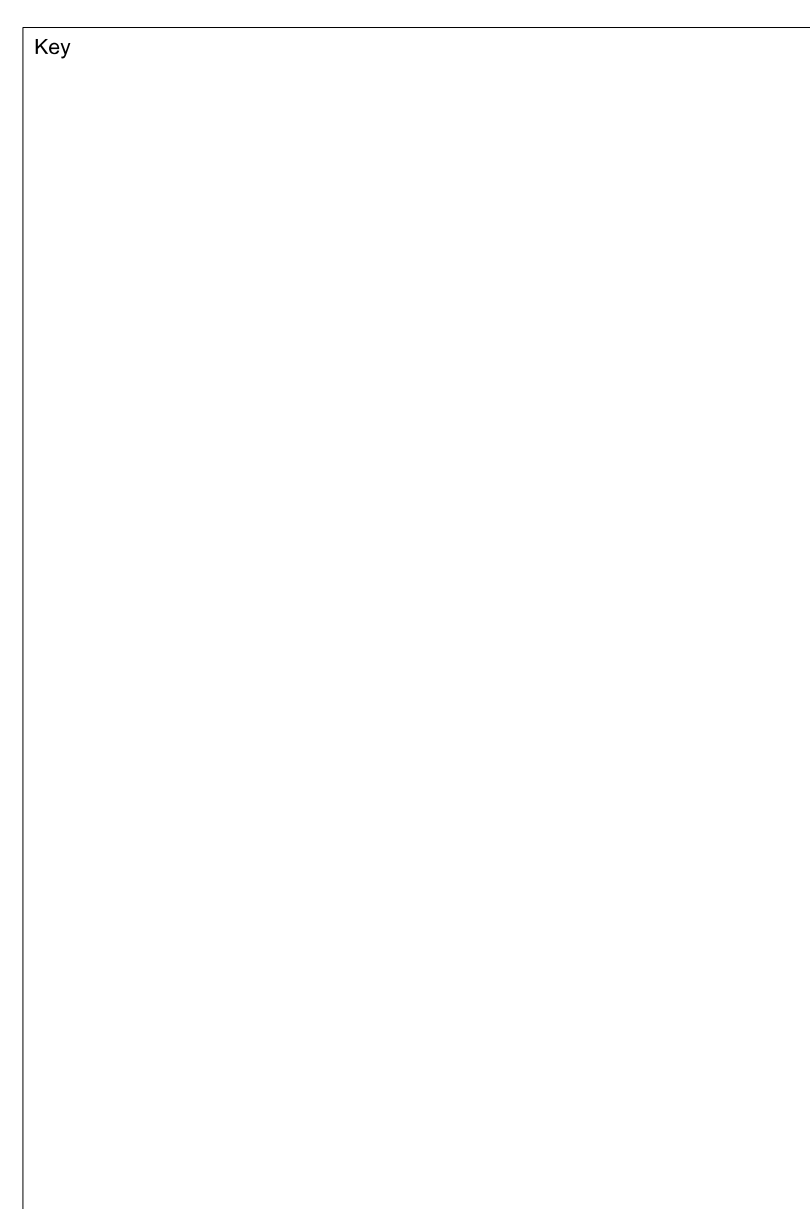
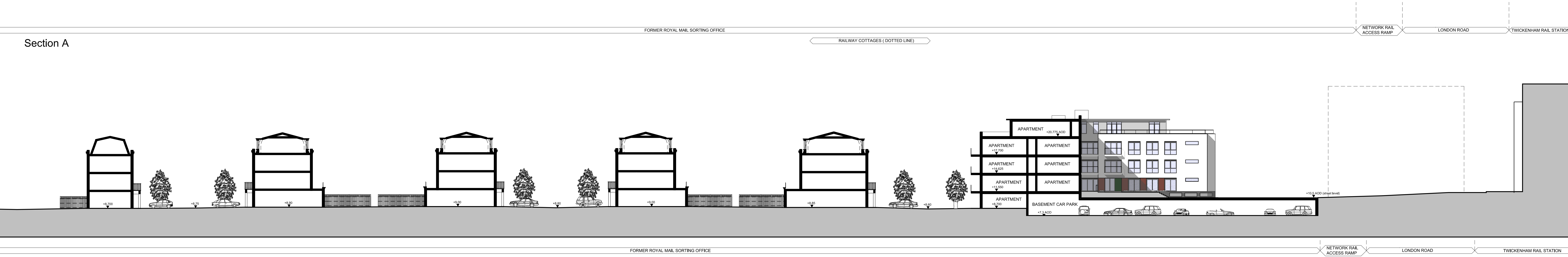


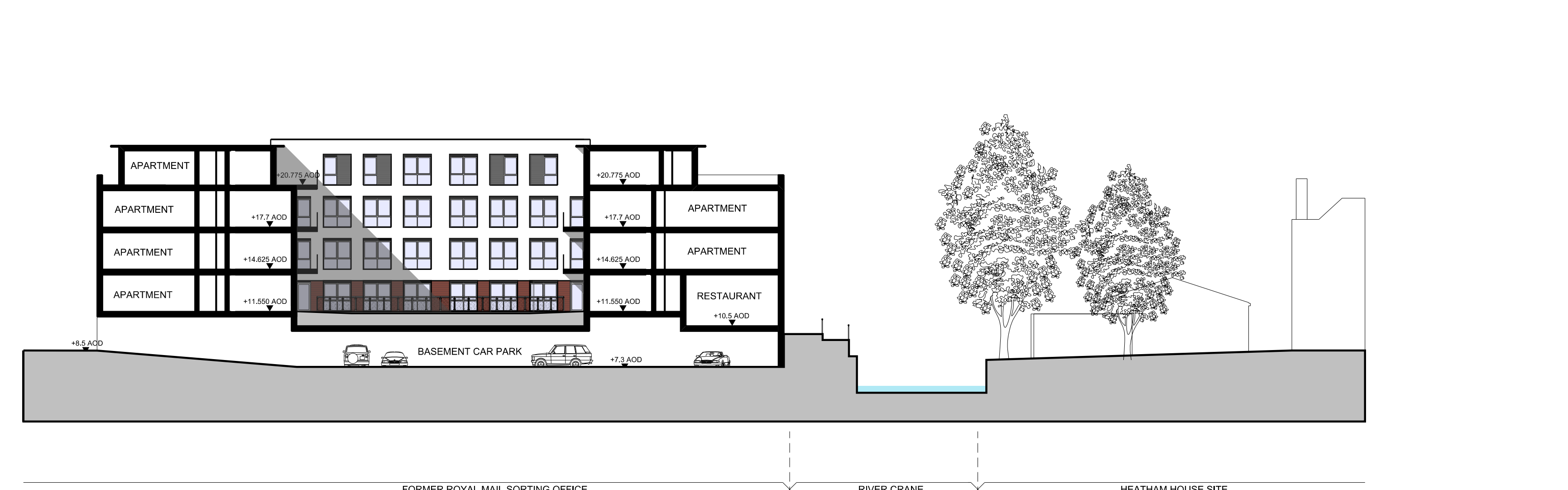
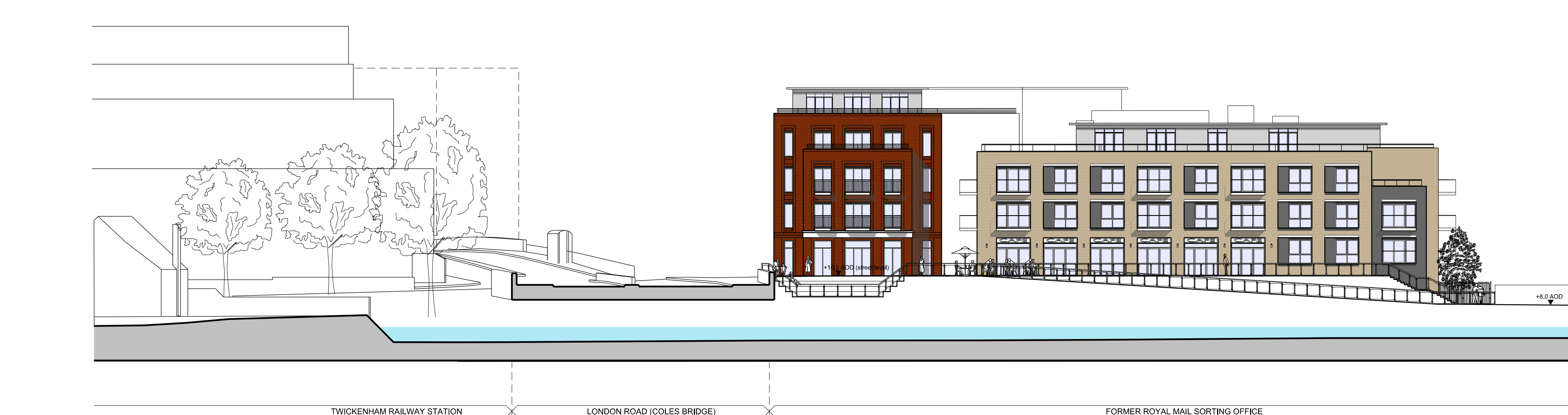
Note:  
 Do not scale from this drawing.  
 All contractors must visit the site and be responsible for taking and checking Dimensions.  
 All construction information should be taken from figured dimensions only.  
 Any discrepancies between drawings, specifications and site conditions must be brought to the attention of the supervising officer.  
 This drawing & the works depicted are the copyright of John Thompson & Partners.  
 This drawing is for planning purposes only. It is not intended to be used for construction purposes, whilst all reasonable efforts are used to ensure drawings are accurate, John Thompson & Partners accept no responsibility or liability for any reliance placed on, or use made of, this plan by anyone for purposes other than those stated above.



Section A



Section B



Section C



Section E

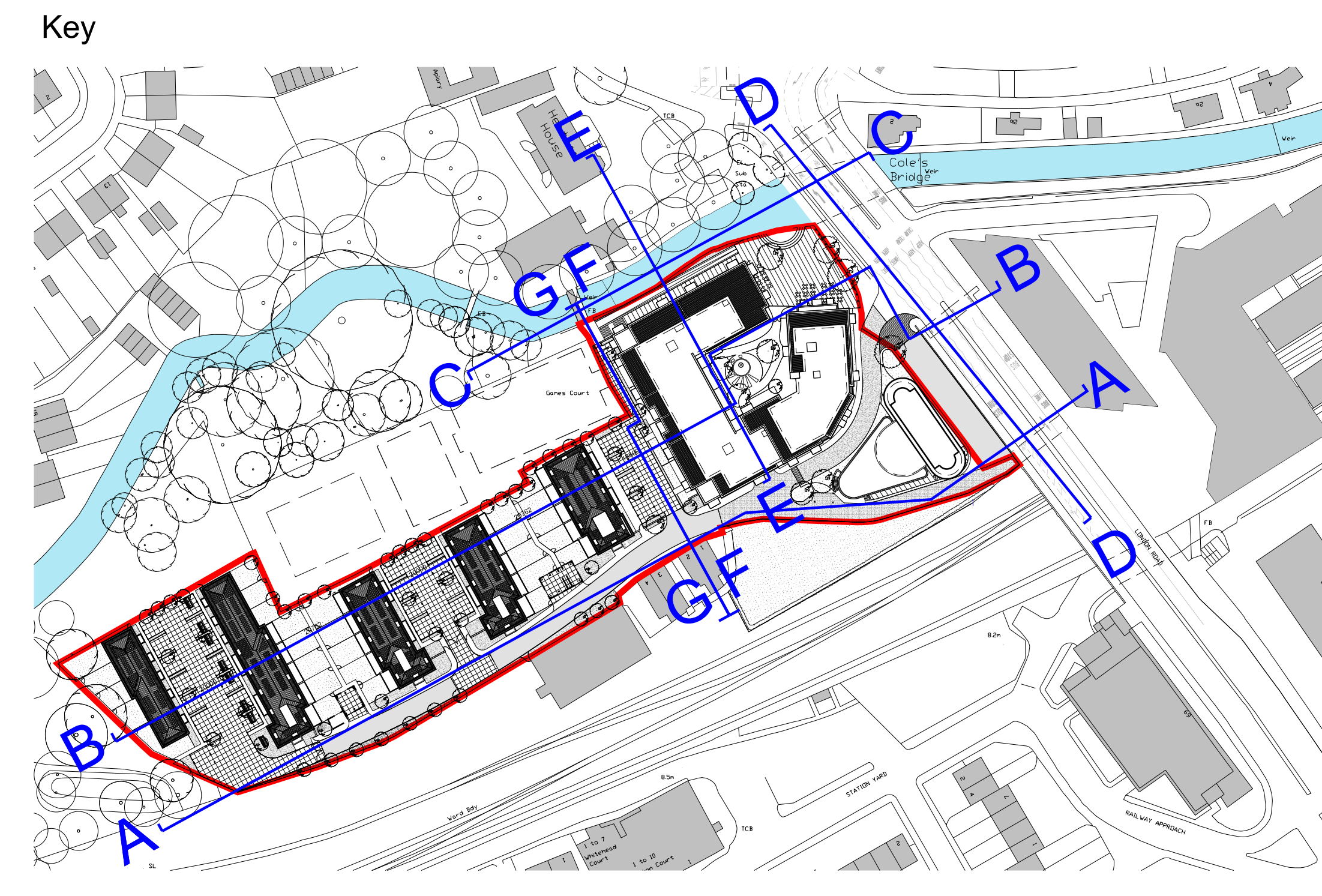
Section D



Section G



Section F



P1	16.11.12	Planning Submission	RA	JP
Rev	Date	Description	Drawn	Chkd
Drawing Status				
<b>Planning</b>				
Client				
St. James Group Ltd				
<b>St James</b>				
Designed for life				
JOHN THOMPSON & PARTNERS				
<b>jtp</b>				
23-25 Great Sutton Street London, EC1V 3JN T: +44 (0)20 7517 1780 F: +44 (0)20 7517 1781 W: www.jtp.co.uk				
Project				
The Former Royal Mail Sorting Office, Twickenham				
Drawing Title				
Site Sections				
Scale @ A0 1:250		Job Ref. 00545		
Drawing No. SS_01		Revision P1		
Scale Bar 0 1 2 3 4 5 6m				