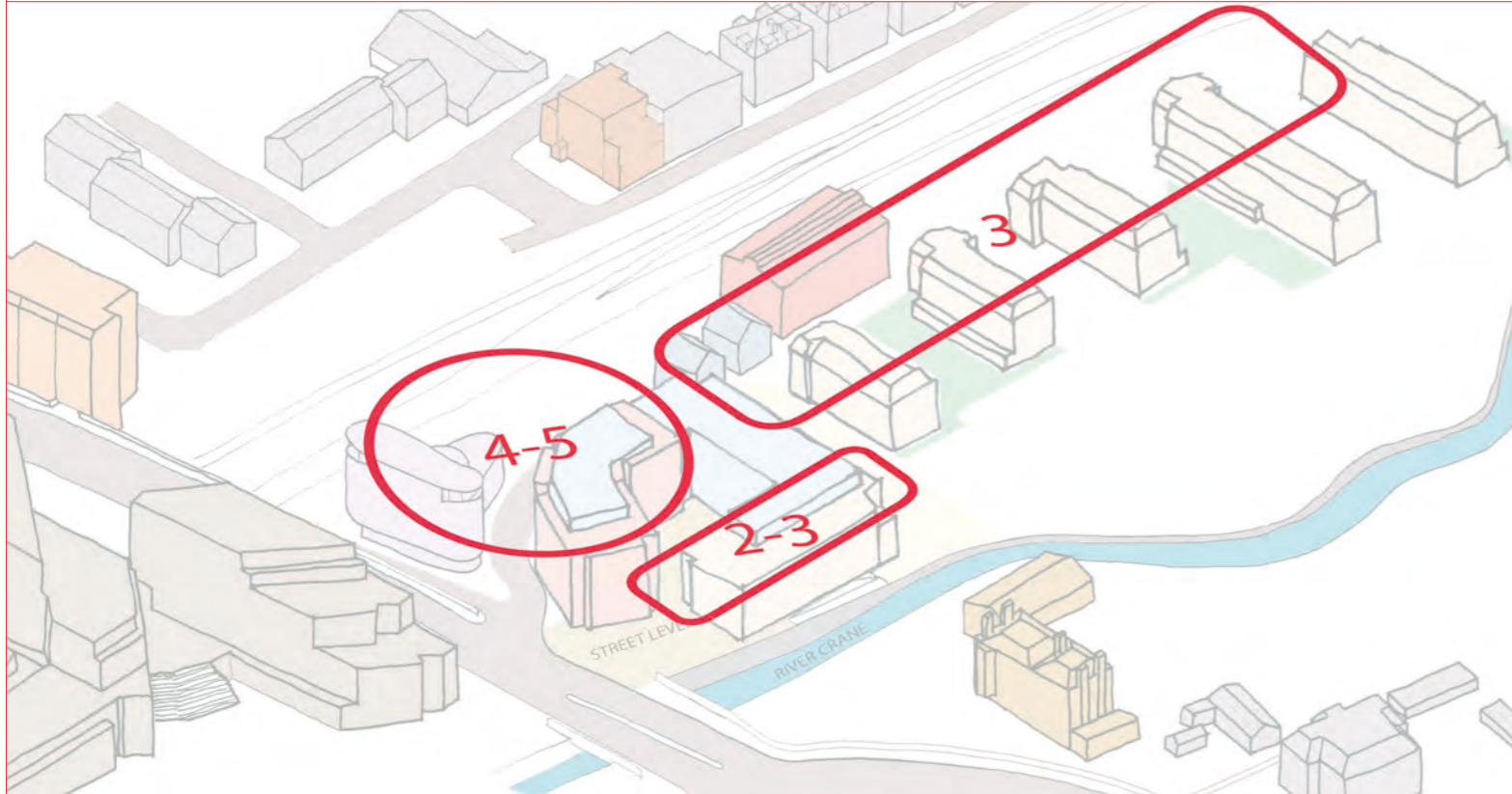
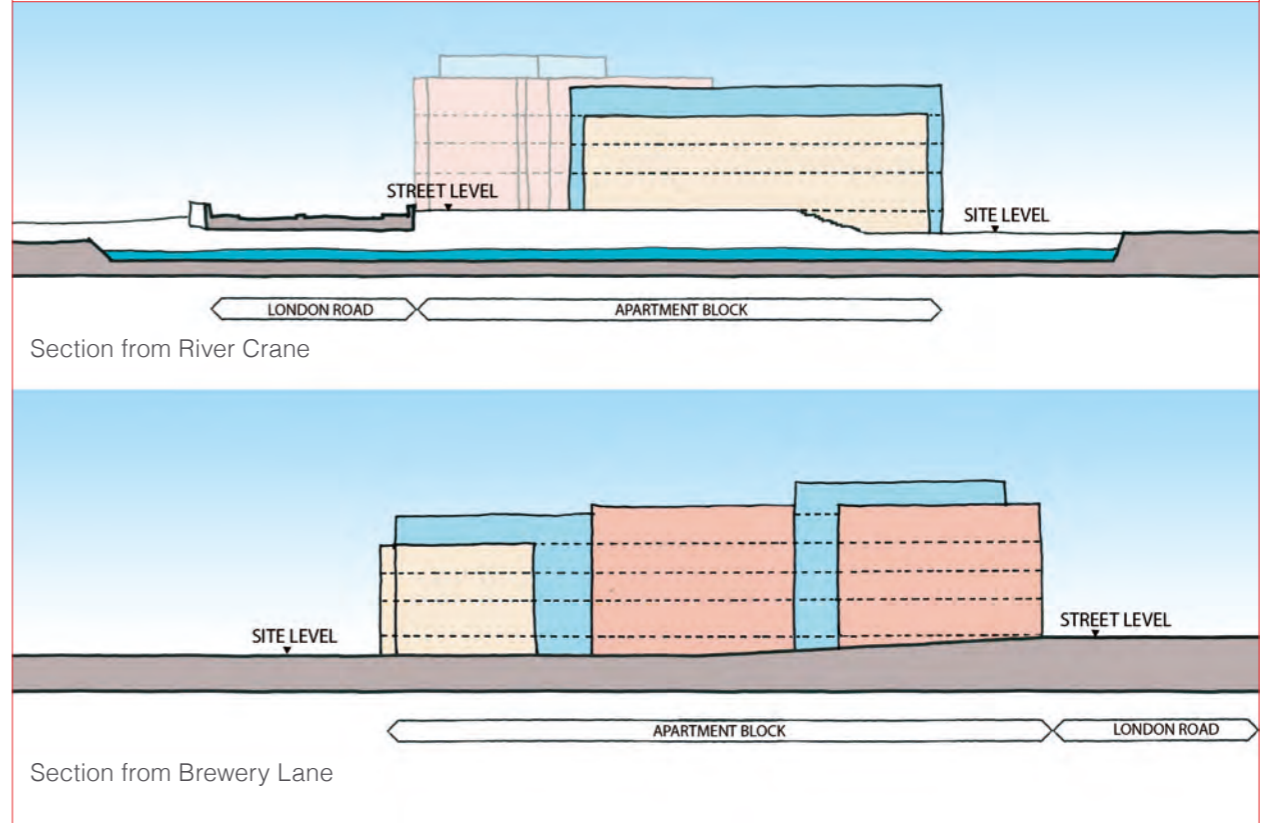


Overview of proposals with proposed building heights from Twickenham Station and Surroundings SPD



Indicative Development Sections



Site Section along Brewery Lane

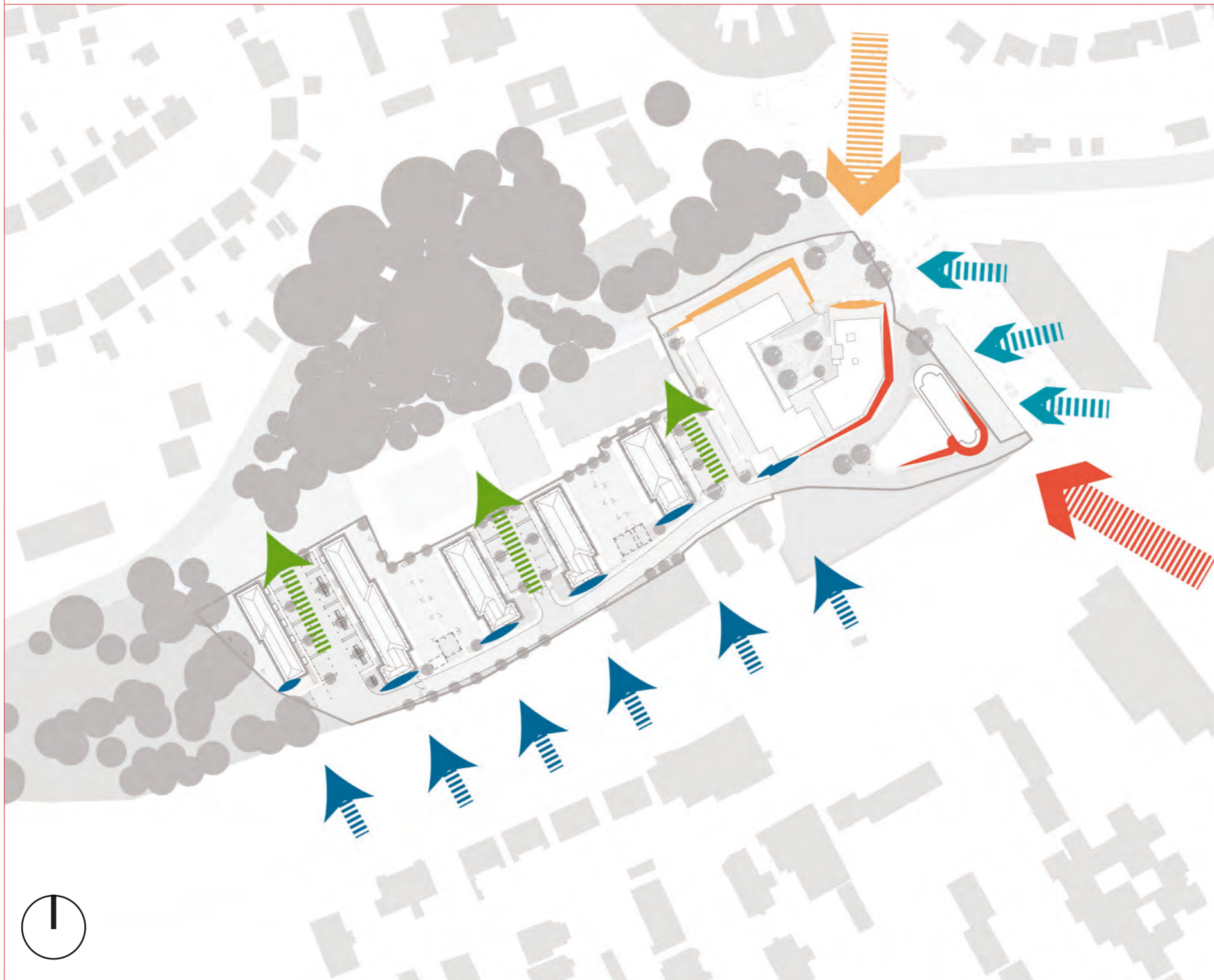
Design Response

Aerial

Aerial Perspective



Views & Vistas








The masterplan responds to existing localised and key public viewpoints – a new public space has been located to the northern corner of the Site adjacent to the River Crane frontage to respond to the view from the junction of Whitton Road and London Road. Building orientation and location helps define this view.

From the London Road bridge, placing the Community Building adjacent to the railway lines provides a focus – this 5 storey building will sit partly below the street level at this point but will nevertheless greatly assist in animating the streetscene.

The orientation of the houses to the western half of the Site purposefully reflects the more historic and prevalent nature of those to the south, in that they run perpendicular to the railway and allow visual permeability through the Site from north to south. The end house is double-fronted to allow an articulated streetscene facing the railway.

On arrival at Twickenham Rail Station, users will view the new Community Building in the foreground, and the Mixed Use Building behind, with views of Heatham House retained as the Mixed Use Building at the front of the Site has been set back from London Road.

-  Visual permeability through scheme
-  Focal views from south (Station Road)
-  Key view from London Road
-  Key views from London Road/Whitton Road
-  Key views from Twickenham Rail Station