

# Design Response

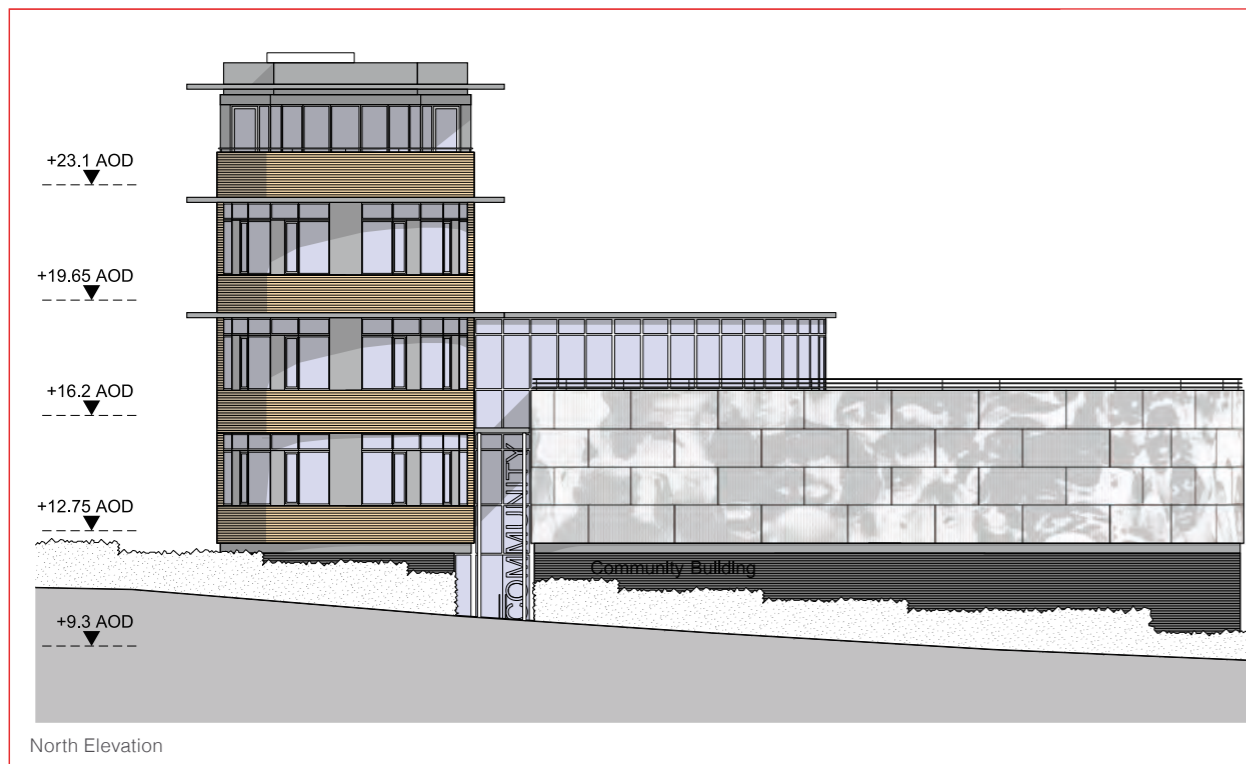
## Character Area - Community Building



The elevations emphasise a horizontal proportion using banded windows and associated brise-soleil, broken only by a panel of vertical glazing, where the stair and lift in the building are expressed opposite the Rail Station, allowing glimpses of activity within the building. The middle three floors of the building are clad in a yellow London stock brick. At ground floor a grey brick is used to relate the building back to the proposed Mixed Use Building.

### Auditorium

Curved forms have been used for the auditorium to soften the building in its context and sweep pedestrians in to the glazed atrium. As there is a need to make the interior space dark, the lower floor is articulated using tall, and banded windows that relate to the London Road elevation. The same boarding material is also used to unite the two elements. The unglazed upper floor of the auditorium is created from photo-engraved concrete panels, which are very durable, and extend up to form the parapet to the roof terrace above. The proposals show an image of an audience to reflect the use of the building, but in the finished building this could reflect the history and culture of Twickenham.



### Glazed Atrium

The glazed link structure provides a visual separation between the two main elements of the Community Building, and allows light to penetrate into the centre of the building. The form rises two storeys before wrapping over the auditorium to form the conservatory. The external materials of the building are carried around into the atrium to emphasise the two separate forms.

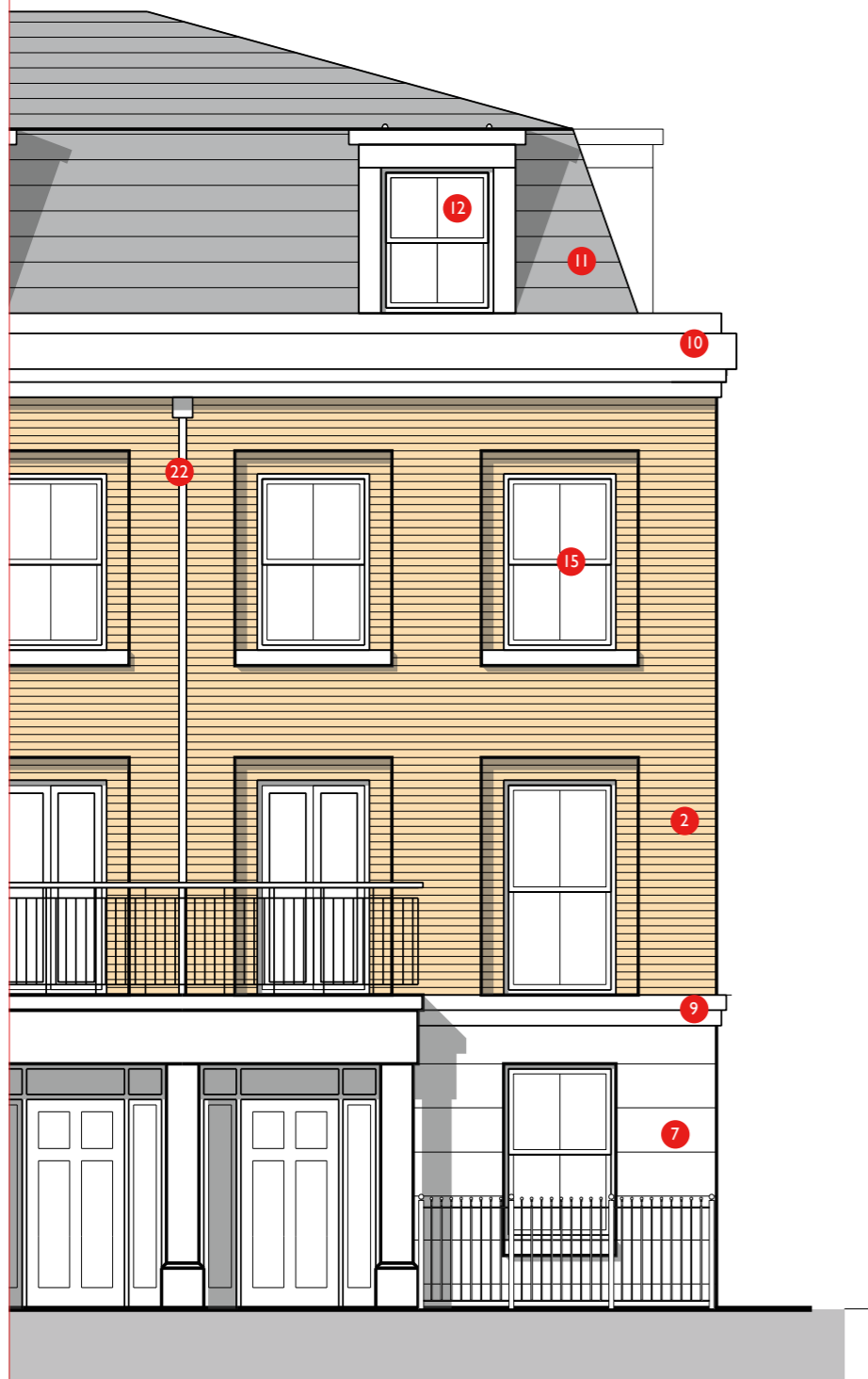
View of Community Building from London Road



# Design Response

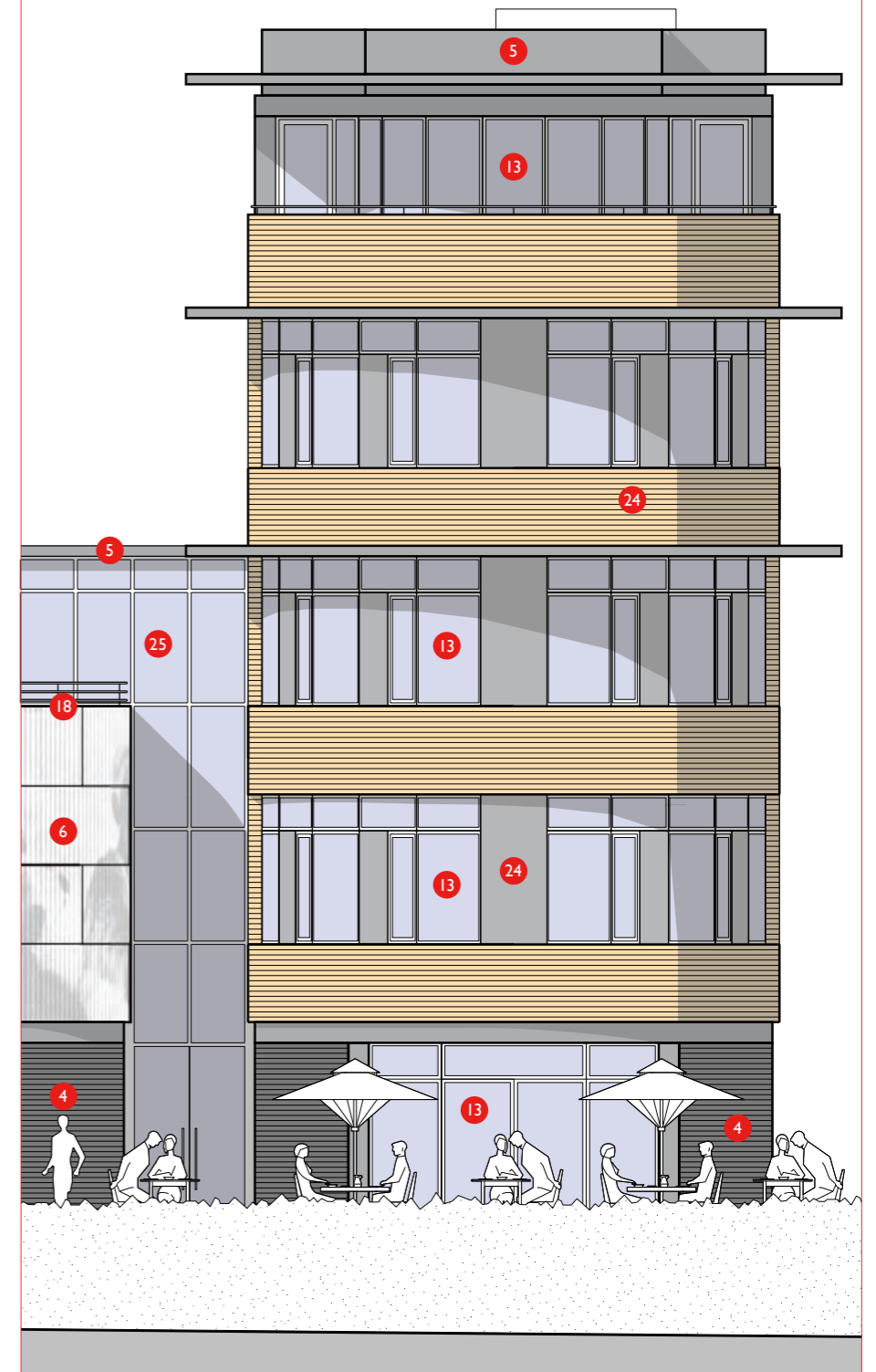
## Materials

House

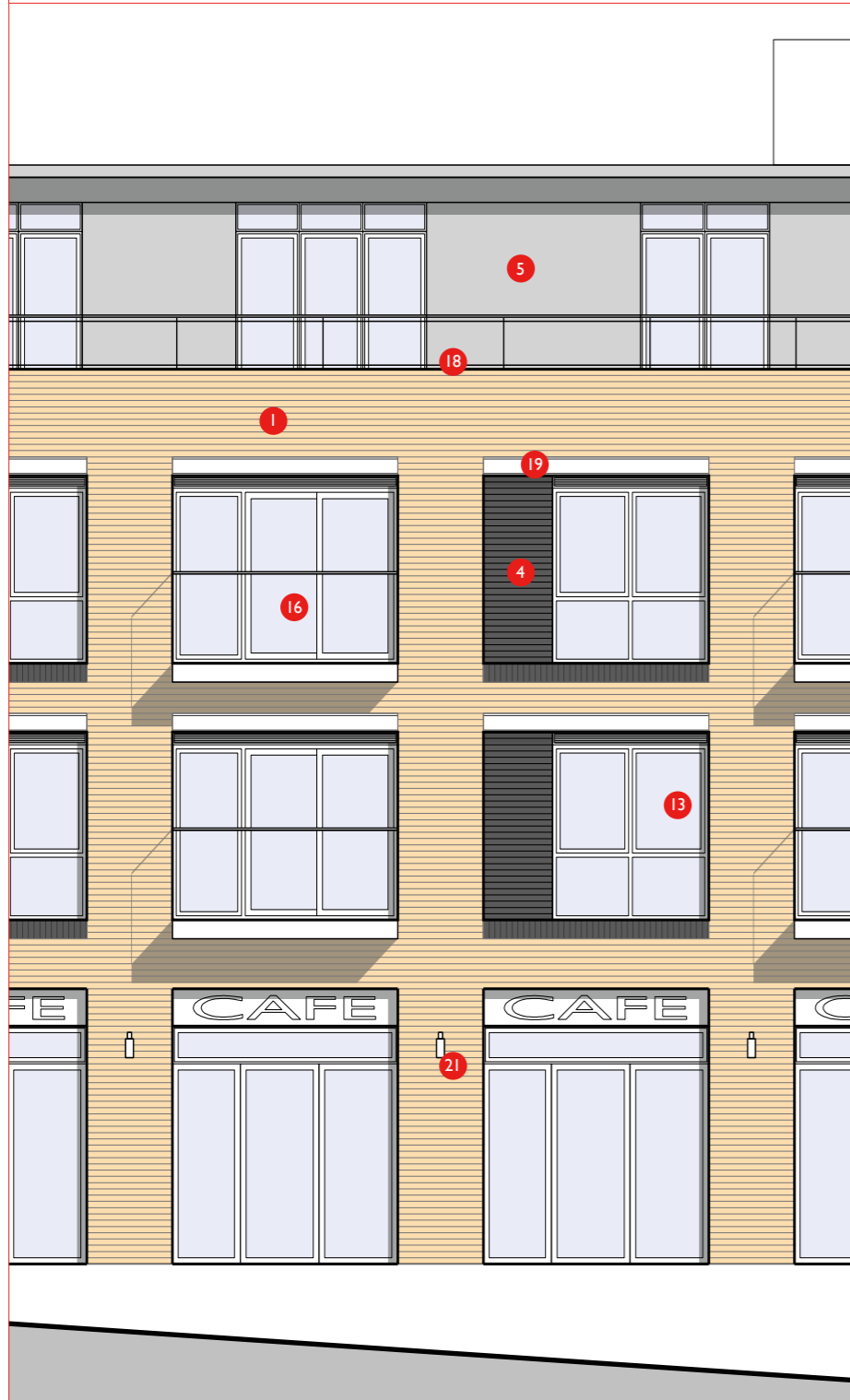


1. Yellow London stock brick
2. Yellow facing brick
3. Orange stock facing brick
4. Charcoal grey facing brick
5. Metal cladding system
6. Photogravure white concrete slabs
7. White through-colour render system
8. Bottle green colour glazed brick
9. Re-con stone banding
10. Re-con stone coping
11. Slate roof
12. Lead-lined dormer window
13. Double glazed windows RAL 7009
14. Double glazed windows RAL 7005
15. White colour double glazed windows
16. Metal balcony with glass balustrade RAL 7009
17. Metal balcony with vertical metal railed-balustrade RAL 7005
18. Pressed metal coping RAL 7009
19. Steel lintel detail RAL 7009
20. White feature lettering
21. Stainless steel light fitting
22. Round-section rwp's black
23. Grey colour rwp's to match windows
24. Grey colour cladding
25. Curtain-wall glazing

Community Building



Mixed Use Building – Warehouse Aesthetic



1. Yellow London stock brick
2. Yellow facing brick
3. Orange stock facing brick
4. Charcoal grey facing brick
5. Metal cladding system
6. Photogravure white concrete slabs
7. White through-colour render system
8. Bottle green colour glazed brick
9. Re-con stone banding
10. Re-con stone coping
11. Slate roof
12. Lead-lined dormer window
13. Double glazed windows RAL 7009
14. Double glazed windows RAL 7005
15. White colour double glazed windows
16. Metal balcony with glass balustrade RAL 7009
17. Metal balcony with vertical metal railed-balustrade RAL 7005
18. Pressed metal coping RAL 7009
19. Steel lintel detail RAL 7009
20. White feature lettering
21. Stainless steel light fitting
22. Round-section rwp's black
23. Grey colour rwp's to match windows
24. Grey colour cladding
25. Curtain-wall glazing

Mixed Use Building – Heritage Aesthetic

