

Design Response

Landscape – Masterplan

Landscape Masterplan



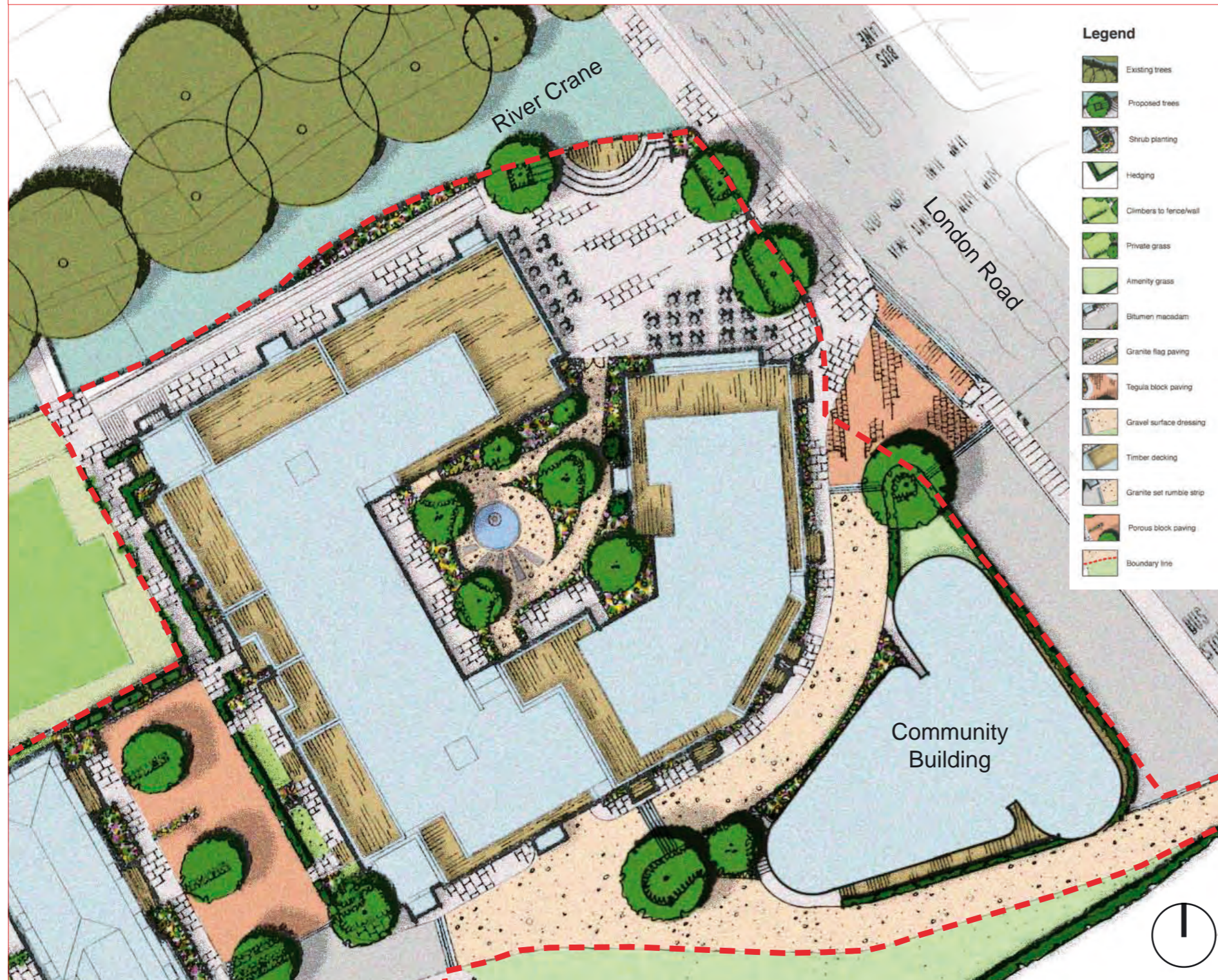
Legend

-  Existing trees
-  Proposed trees
-  Shrub planting
-  Hedging
-  Climbers to fence/wall
-  Private grass
-  Amenity grass
-  Bitumen macadam
-  Granite flag paving
-  Tegula block paving
-  Gravel surface dressing
-  Timber decking
-  Granite set rumble strip
-  Porous block paving
-  Boundary line

Design Response

Landscape – Mixed Use Quarter

The Mixed Use Quarter



The Civic Piazza

At the front of the Site adjacent to the London Road and opposite the Rail Station it is proposed to create a new contemporary public piazza. This area will be at street level which will create a positive relationship and dialogue with the surrounding streetscape. The space will be animated with a curved seating amphitheatre overlooking the river and opposite the landscaped bank. Three large specimen trees will be planted to provide a sense of vertical enclosure and filter screen to the very busy London Road. The active frontage from the adjacent restaurants will further animate the architectural backdrop and an 'Al Fresco' culture will be encouraged. The space will be paved with high quality masonry materials set in a simple pattern which will provide great flexibility of public uses and civic functions.

The Riverside Promenade

Adjacent to the river it is proposed to provide a ramped pedestrian link from the adjoining LBRuT land up to the piazza level. Adjacent to the building elevation it is proposed to provide a level linear terrace overlooking the river and adjacent landscape. To minimise the visual vertical height difference between the river and the new promenade it is proposed to provide a tiered landscaped terrace.

The Landscape Curtilage to the Community Building

Along the curved ramped access road it is proposed to plant a line of semi-mature street trees in front of the new Community Building. This will help express a defined curtilage and provide an element of visual softening. Two further breakout landscape spaces are provided to cater for outdoor seating and general relaxation.

The Communal Courtyard Garden

At the centre to the Mixed Use Building it is proposed to provide a high quality landscaped communal garden. This space will be embraced with raised planters planted with specimen multi-stem trees and shrubs. A central water feature will provide a quiet focal seating space.

Design Response

Landscape – Housing Quarter

The Mews Style Entrance Courts

A series of three mews styled courtyard spaces will be created to provide feature entrances to the town houses. The mews will also cater for private car parking and be laid out in a formal manner, framed with mature tree planting. The ends adjacent to the sports pitches will be finished with 3m high boundary treatment walls which will act as appropriate acoustic barriers. They will be planted with climbers and pleached trees to visually soften the impact.

Brewery Lane

It is proposed to plant an evergreen hedge and line of trees along the boundary adjacent to the railway line. This will provide visual screening and an attractive tree lined access road.

The Housing Quarter





1



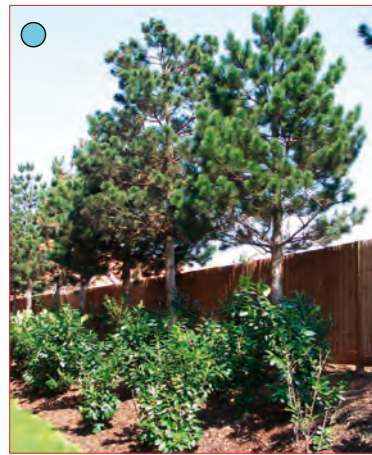
2



3



4



5



6



7



Tree Location Plan



Tree Schedule

Proposed Trees & Multi-stems

1. Acer platanoides Columnare
 2. Carpinus betulus 'Frans Fontaine'
 3. Corylus columna
 4. Cornus mas
 5. Pinus nigra
 6. Tilia cordata 'Greenspire'
 7. Carpinus betulus (pleached)
 8. Amelanchier lamarckii
 9. Crataegus prunifolia
- Amelanchier lamarckii (multi stem umbrella, 2-3m spread) 3-3.5m high
 - Acer platanoides Columnare 25-30cm girth
 - Carpinus betulus (Pleached) 20-25cm girth
 - Carpinus betulus 'Frans Fontaine' 20-25cm girth
 - Corylus columna 20-25cm girth
 - Crataegus prunifolia (multi stem umbrella, 3-4m spread) 3.5-4m high
 - Cornus mas (multi stem umbrella, 3-4m spread) 3.5-4m high
 - Pinus nigra (standard) 25-30cm girth
 - Tilia cordata 'Greenspire' 40-45cm girth

Trees for Rear Gardens

- Acer campestre 10-12cm girth
- Crataegus laevigata 10-12cm girth
- Malus sylvestris 10-12cm girth
- Prunus avium 10-12cm girth
- Prunus padus 10-12cm girth
- Sorbus aria 10-12cm girth
- Sorbus aucuparia 10-12cm girth

Design Response

Landscape – Play

Although no formal play space is proposed within the development, the scheme has been designed to offer informal play space through recreational landscaping features. Public space has been designed to be multi functional in order to be able to offer informal play opportunities for children of all ages.

The scheme is intended to create recreational opportunities within the public piazza, along the newly created River Crane environment and along Brewery Lane. Examples of play features which could be incorporated into these spaces could include interactive water features such as water jets in addition to nature and heritage boards.

Play – on – the – way features could be located throughout the Site whereby music lyrics or poetry could be inlaid into the paving of footpaths and walkways. Brass rubbings situated in more prominent locations could detail Twickenham's rich musical and historical past.

Water Jets



Nature Boards



Text inlaid into Landscape

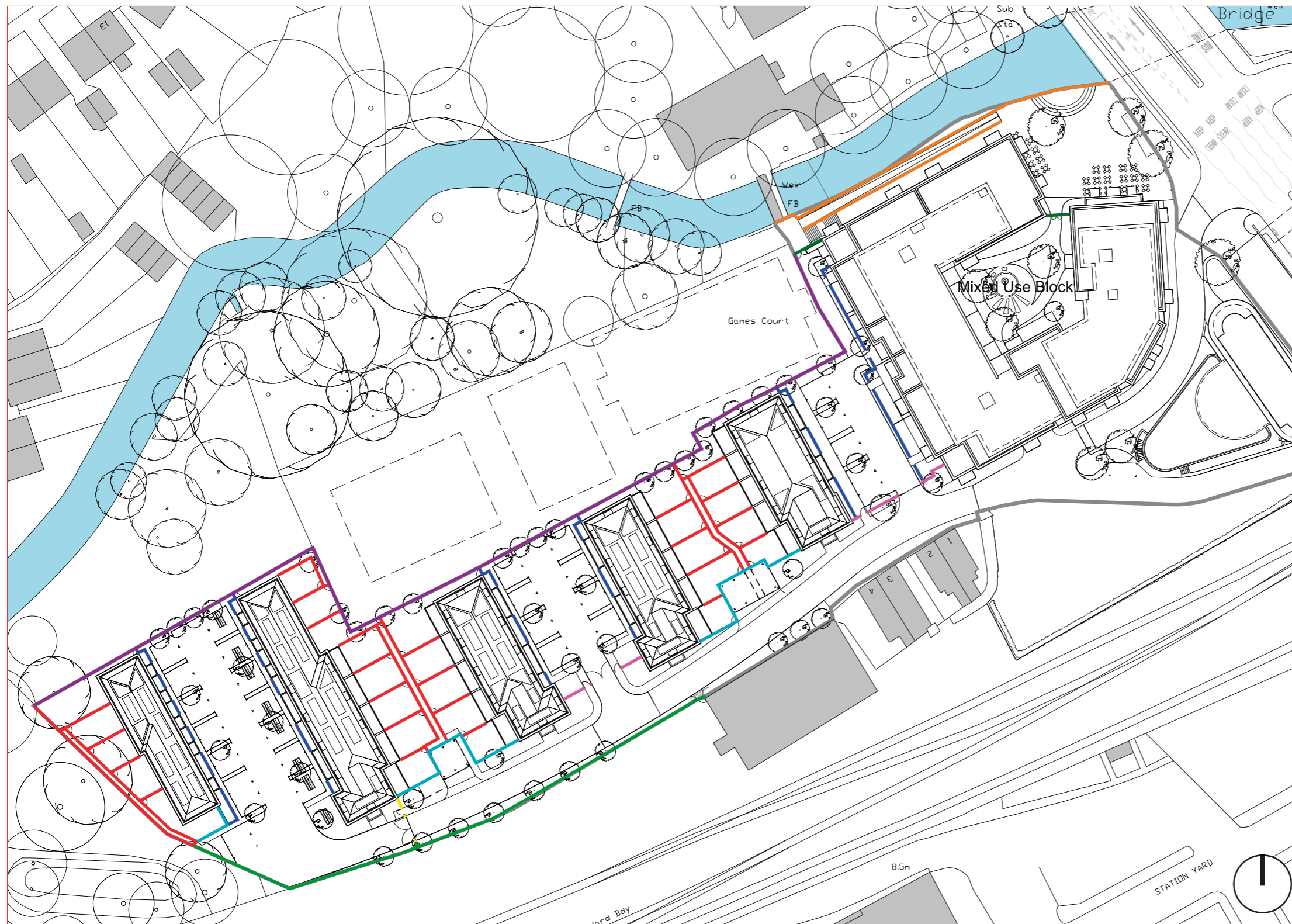


Heritage Boards



Design Response

Landscape – Boundary Treatments



- Boundary Treatment Type A (1100mm high metal railings)
- Boundary Treatment Type B1 (2000mm high metal railings)
- Boundary Treatment Type B2 (2000mm high metal railings & gates)
- Boundary Treatment Type C (1800mm high timber fence)
- Boundary Treatment Type D (1100mm high glass balustrade)
- Boundary Treatment Type E1 (2100mm high Brick Wall)
- Boundary Treatment Type E2 (3000mm high brick wall / fence)
- Boundary Treatment Type E3 (2100mm high Brick Wall & Gates)
- Boundary Treatment Type E4 (1500mm high brick wall with metal railings & Gates)

