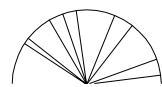
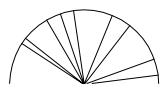
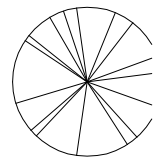
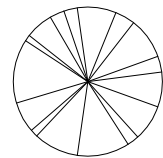
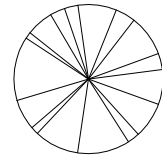
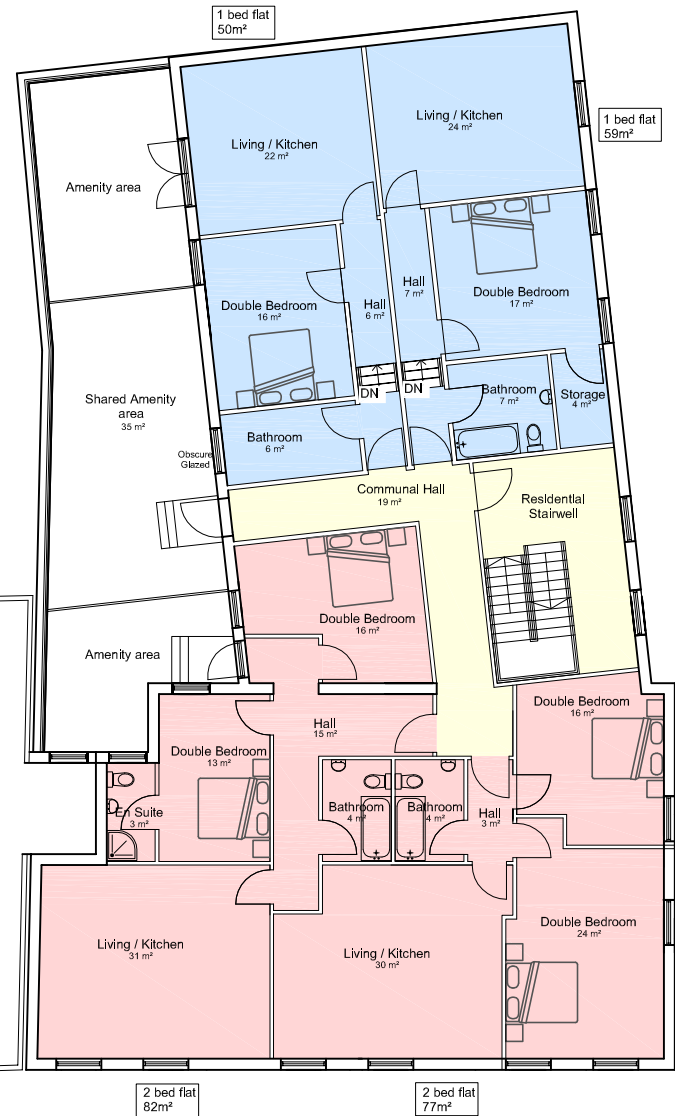
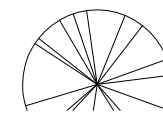
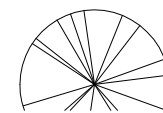
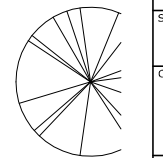
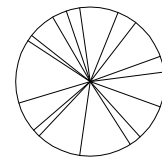
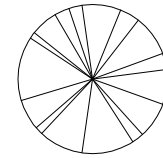
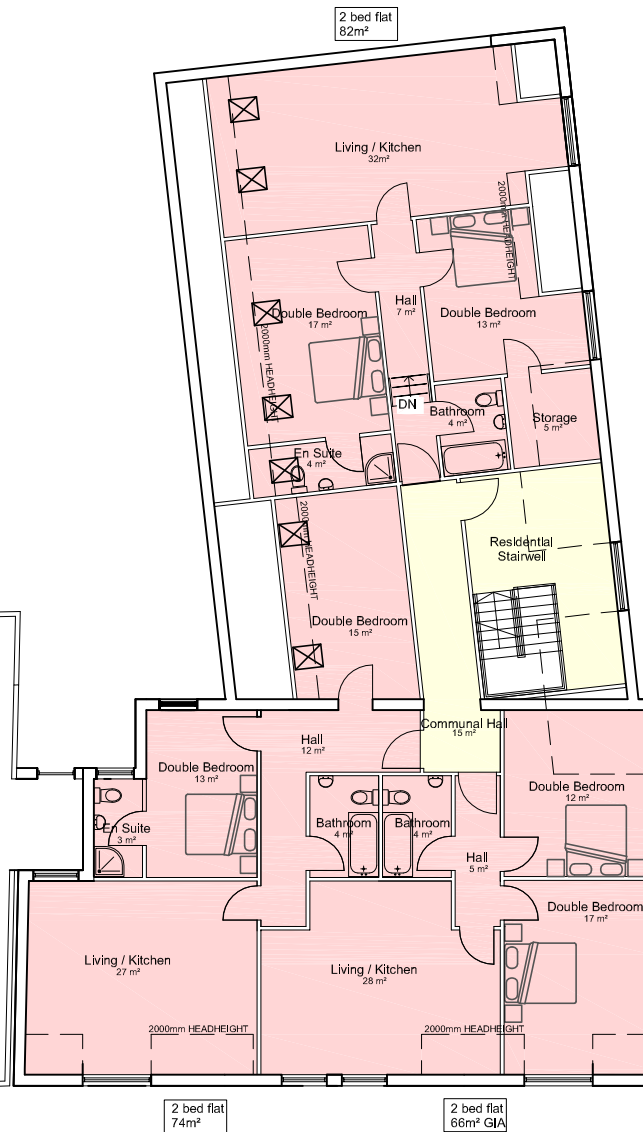


**Room Legend**

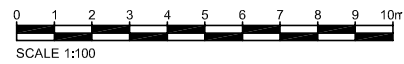
- 1 bed flat
- 2 bed flat
- Residential
- Retail



PROPOSED FIRST FLOOR PLAN



PROPOSED SECOND FLOOR PLAN



Revision	Date	Description
H	28-03-13	Rooflights adjusted
G	04-03-13	Planners comments
F	01-03-13	Planners comments
E	28-02-13	Planners comments
D	27-02-13	Planners comments
C	15-02-13	Planners comments
B	04-02-13	Planners comments
A	17-01-13	For comment
-	11-01-13	First issue

architects  
project managers  
cost consultants  
northumberland house  
303-306 high holborn  
london wctv 7jz  
tel: 020 7440 8640  
fax: 020 7440 9641

Status: **PRELIMINARY ISSUE**

Client: **FRONTDOOR PROPERTIES LIMITED**

Project Title: **RETAIL & RESIDENTIAL  
210 KINGSTON ROAD  
TEDDINGTON  
TW11 9JF**

Drawing Title: **PROPOSED  
FIRST & SECOND FLOOR**

Project Number <b>13-744</b>	Drawing Number <b>P13-744-11</b>	Revision <b>H</b>
---------------------------------	-------------------------------------	----------------------

Drawn VA	Checked	Scale 1:100@A1	Date 11-01-13
-------------	---------	-------------------	------------------

The content of this drawing is the property of JLA Limited and may not be copied in whole or part without formal consent.