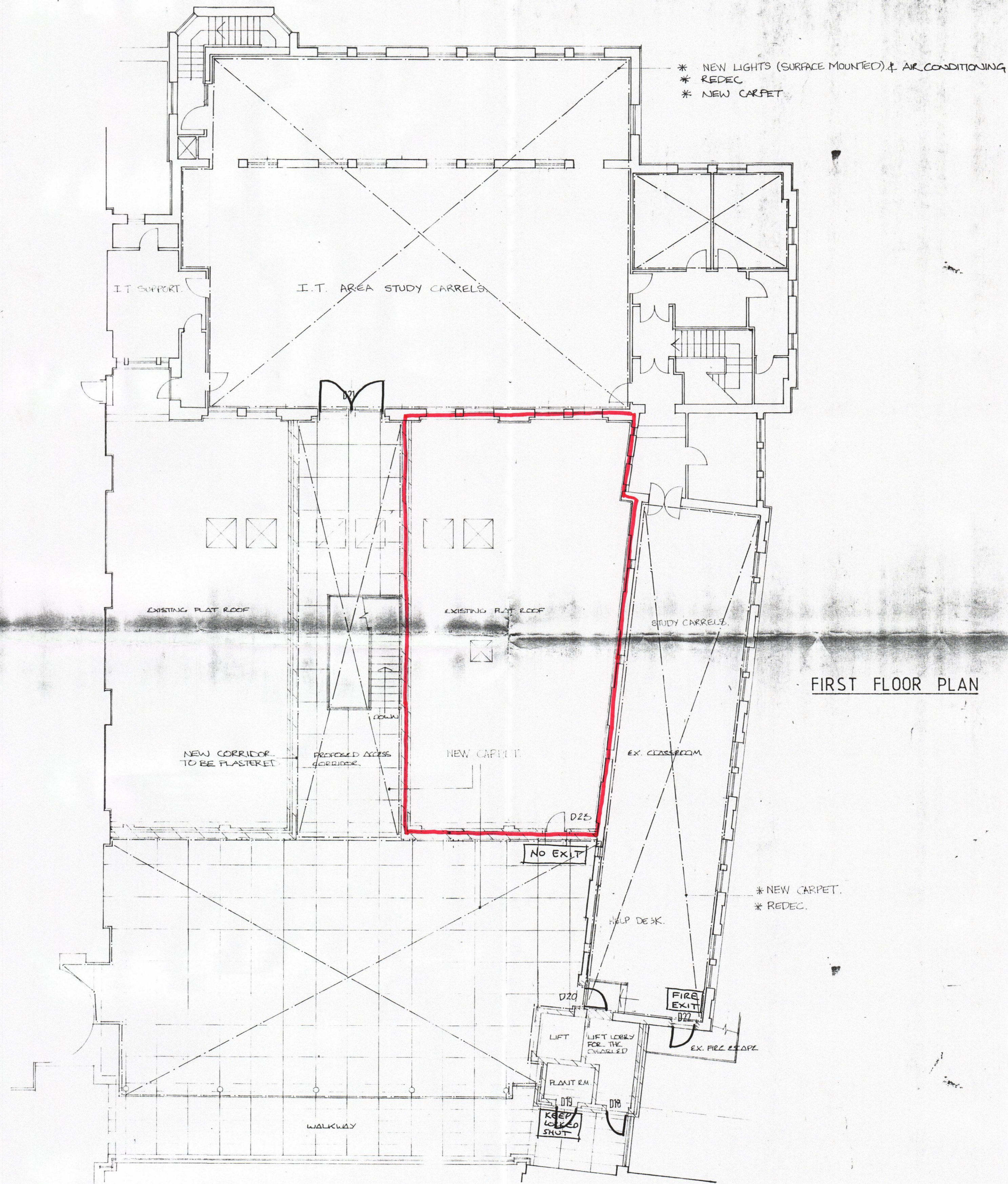


13, 12 13 / FUL

RECEIVED
12 APR 2013
PLANNING



FIRST FLOOR PLAN

PP-02577127
St Mary's University College
LRC First Floor Extension

- REV. H DOOR SWING AMENDED
- REV. G FURNITURE REMOVED
- REV. F AMENDMENTS IN ACCORDANCE WITH SCHEDULE OF SAVINGS
- REV. E DOOR D23 ADDED, DEC 95 A.V. TENDER SET.
- REV. D DOOR SWING CHANGED GLAZED SCREEN AW.
- REV. C REFOURISHMENT ALTERATIONS AFFORD AW.
- REV. B 20/10/95 GENERAL AMENDMENT AW.
- REV. A STRUCTURE REMOVED BUT KEYS EX. CLASSROOM & EXTENSION RAMP ADDED

KEY
N 1/2 HR FIRE DOOR

ASH DESIGN CONSULTANTS LTD STUDIOS 2 THE CENTRE NEW ASH GREEN LONGFIELD KENT DA3 8JL FAX 01474 879 518 TEL 01474 879 484		
ST. MARY'S COLLEGE		
LIBRARY EXTENSION		
FIRST FLOOR PLAN		
Date SEPT. 95	Scale 1:100	Drawn Checked
Job no 9404	Drawing no 15	Revision 4