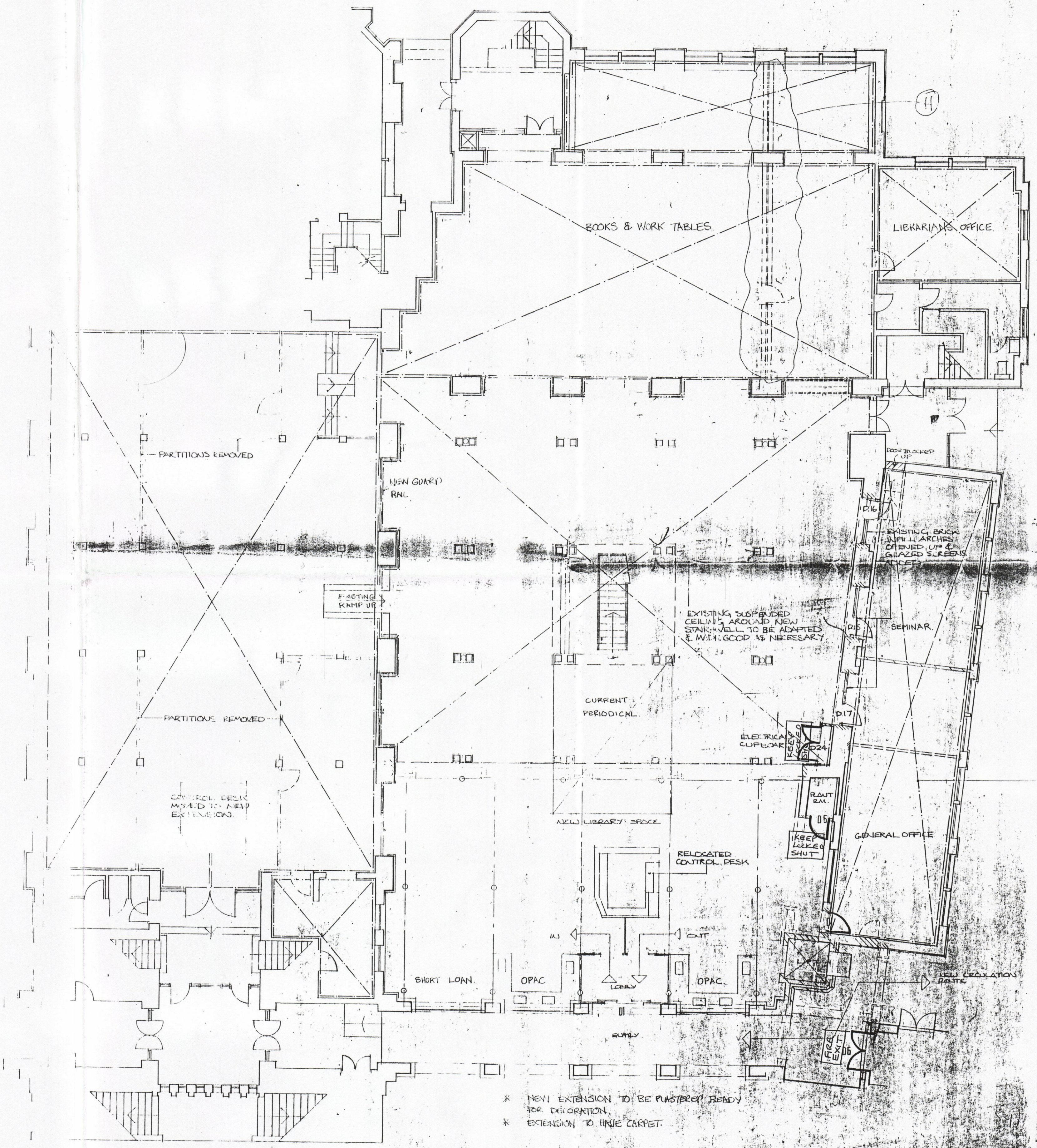


13/1213/FUL

RECEIVED  
12 APR 2013  
PLANNING



GROUND FLOOR PLAN

- \* NEW CEILING
- \* NEW CARPET
- \* NEW LIGHTS
- \* REDEC.
- \* NEW FLOOR RAISED LEVEL WITH NEW EXTENSION

KEY  
1/2 Hr FIRE DOOR

PP-0257712-7  
St Mary's University College  
LRC First floor extension

- REV. S. GLAZED SCREENS ADDED TO OPENINGS
- REV. I. EXISTING PARTITION REMOVED & GLAZED GLAZED SCREEN & ELEC. CUPBOARD ADDED
- REV. H. PARTITIONS REMOVED
- REV. G. FURNITURE REMOVED
- REV. F. AMENDMENTS TO ACCORDANCE WITH SCHEDULE OF SAVINGS
- REV. E. OPENINGS ADJUSTED TO EST. WALLS
- REV. D. REPAIRS ALTERATIONS ADDED
- REV. C. GENERAL AMENDMENTS 20/11/98. AW.
- REV. B. BOOKSHELVES ADDED, PERIODICAL STORES & BOOKSTACK ADDED, CONTROL RE-DESIGNED
- REV. A. DISABLED RAMP ADDED, OPENINGS IN EXISTING STRUCTURE ADDED, EXISTING ARCHES REMOVED

ASH DESIGN CONSULTANTS LTD STUDIO 2 THE CENTRE NEW WASH GREEN LONGFIELD KENT DA3 8JY FAX: 01474 879 518 TEL: 01474 879 484		
Client: <b>ST. MARY'S COLLEGE</b>		
Job: <b>LIBRARY EXTENSION</b>		
Drawing: <b>GROUND FLOOR PLAN</b>		
Date: <b>SEPT 98</b>	Scale: <b>1:100</b>	Drawn: <b>J</b>
Job #: <b>9404</b>	Drawing #: <b>14</b>	Revision: <b>J</b>