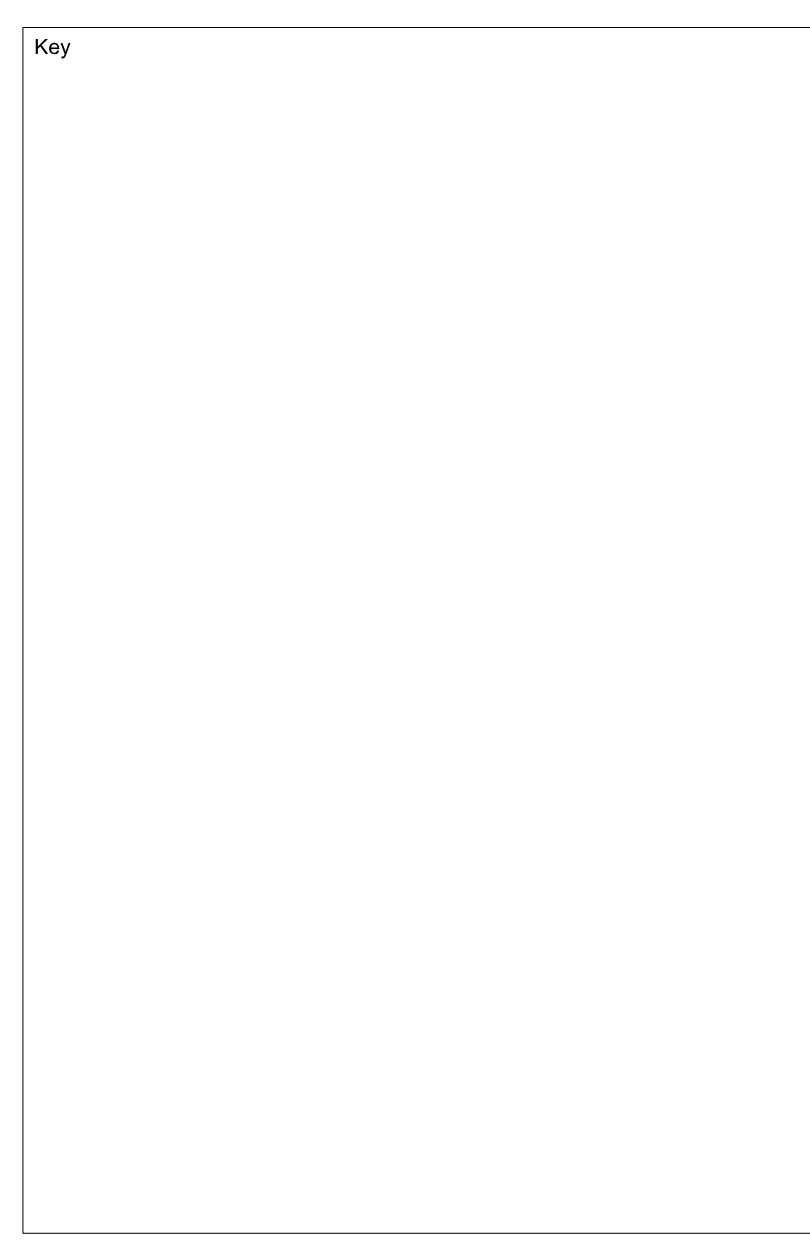
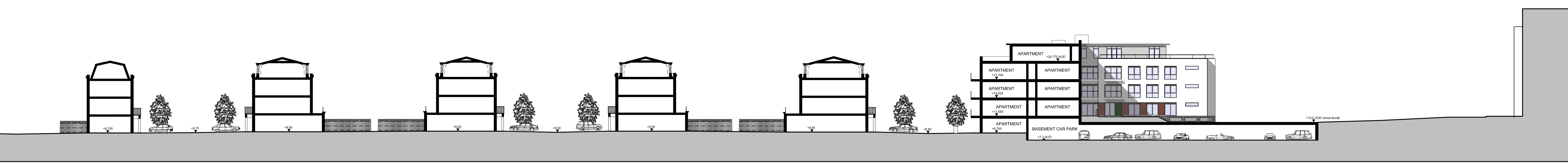
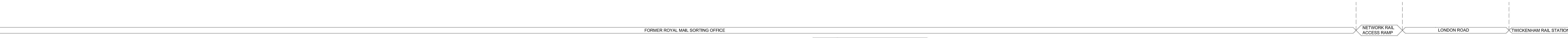


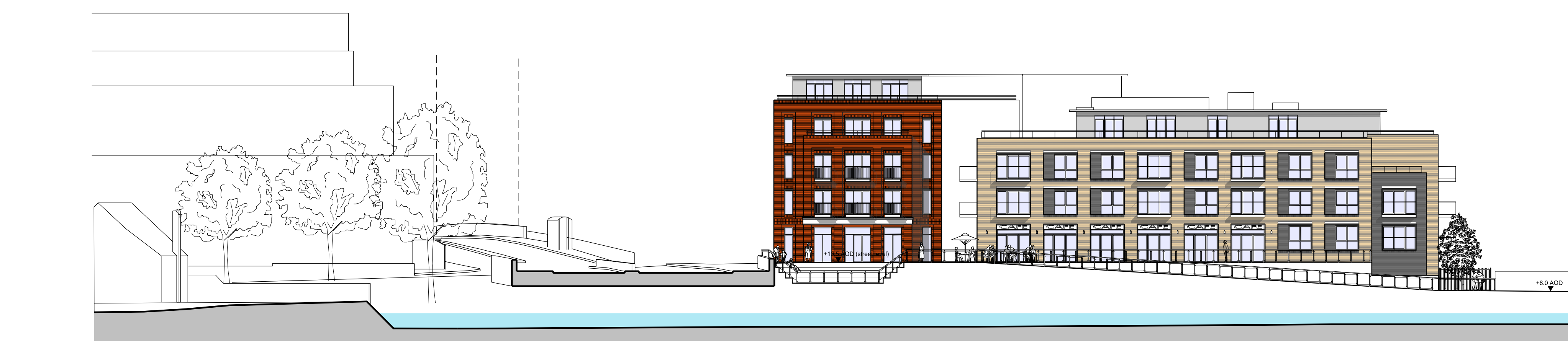
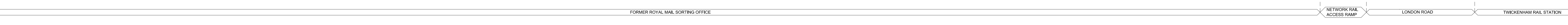
Note:
Do not scale from this drawing.
All contractors must visit the site and be responsible for taking and checking dimensions.
All construction information should be taken from figured dimensions only.
Any discrepancies between drawings, specifications and site conditions must be brought to the attention of the supervising officer.
This drawing & the works depicted are the copyright of John Thompson & Partners.
This drawing is for planning purposes only. It is not intended to be used for construction purposes, whilst all reasonable efforts are used to ensure drawings are accurate, John Thompson & Partners accept no responsibility or liability for any reliance placed on, or use made of, this plan by anyone for purposes other than those stated above.



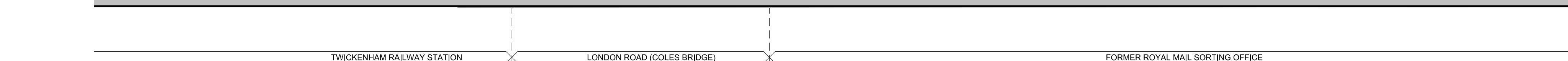
Section A



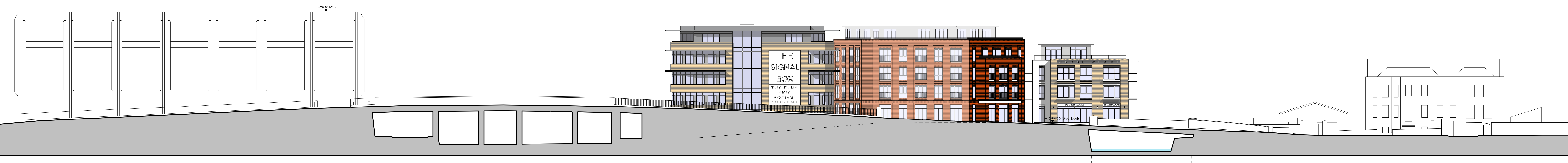
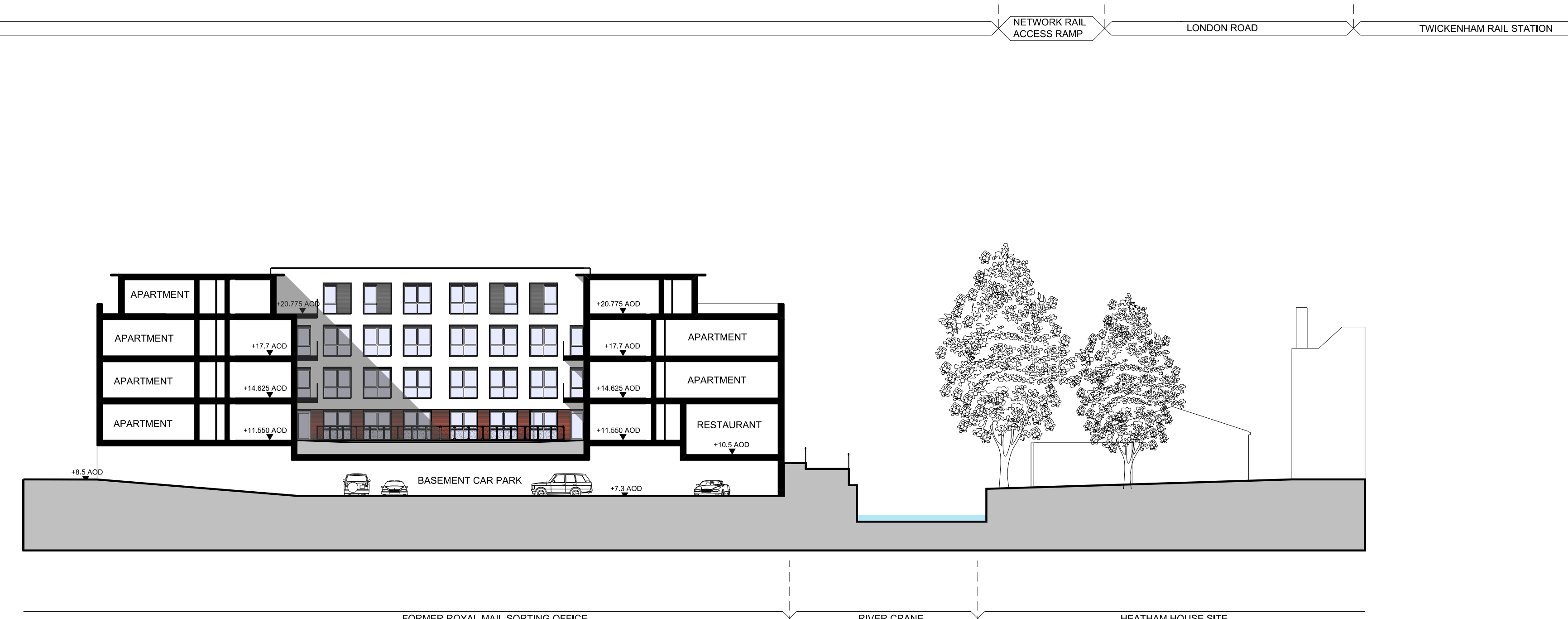
Section B



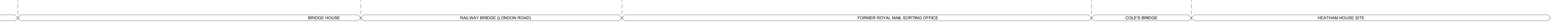
Section C



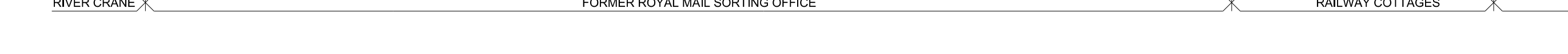
Section E



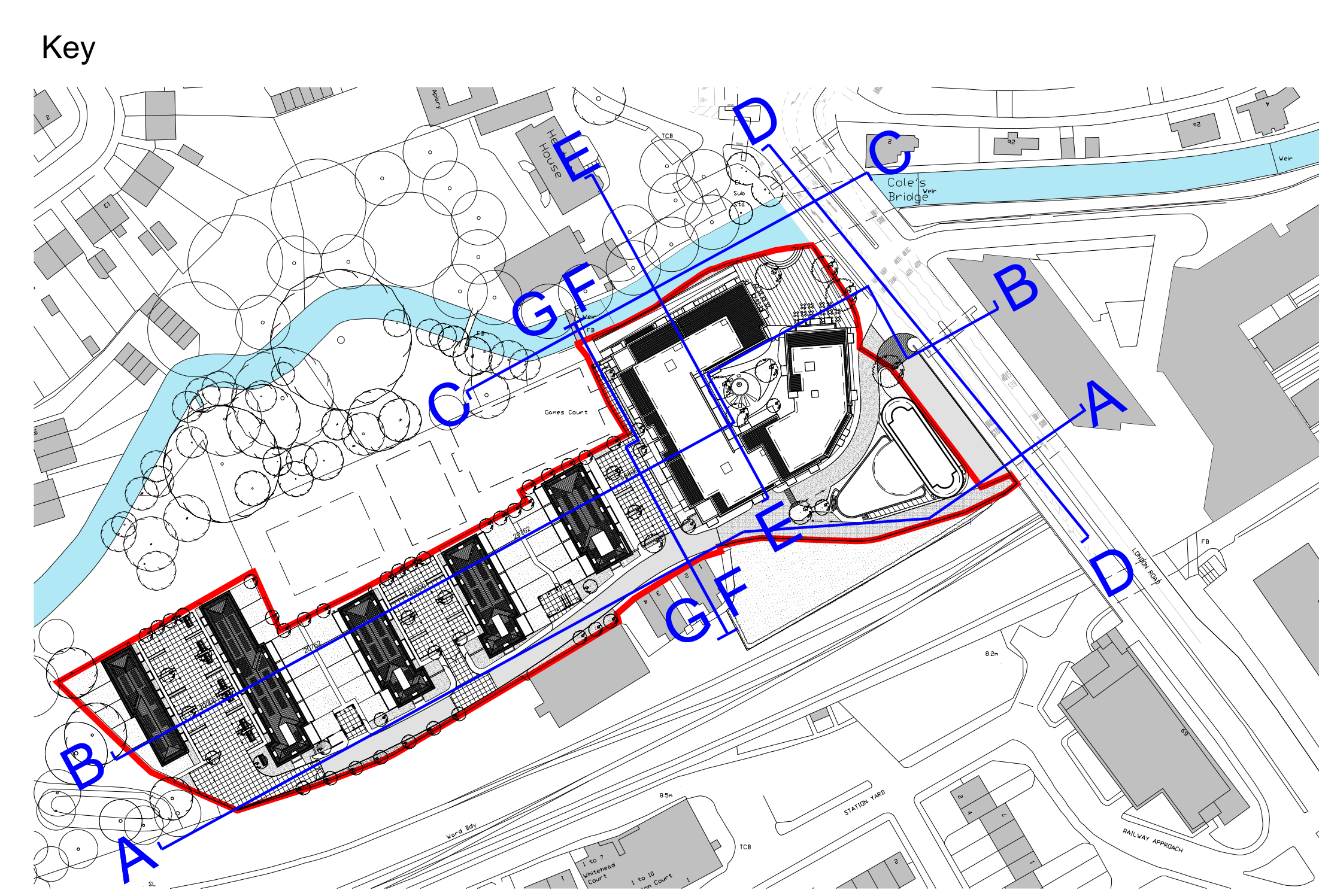
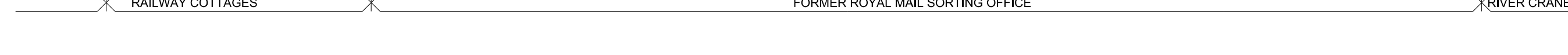
Section D



Section F



Section G



P2	03.05.13	Site Section A-A, revised to show gates to rear gardens RA	IP
		Site Section B-B, revised, Bridge House removed	
		Site Section C-C, E-E & F-F revised to show 3m wide ramp to River Crane	IP
P1	16.11.12	Planning Submission	RA

Rev | Date | Description | Drawn | Chkd

Drawing Status
Planning
Client
St. James Group Ltd
St James
Designed for life

JOHN THOMPSON & PARTNERS
jtp
23-25 Great Sutton Street
London, EC1V 3JN
T: +44 (0)20 7017 1780
F: +44 (0)20 7017 1781
www.jtp.co.uk

Project
The Former Royal Mail
Sorting Office, Twickenham
Drawing Title
Site Sections

Scale @ A0 1:250 Job Ref. 00545
Drawing No. SS_01 Revision P2
Scale Bar 0 2 4 6 8 10m