

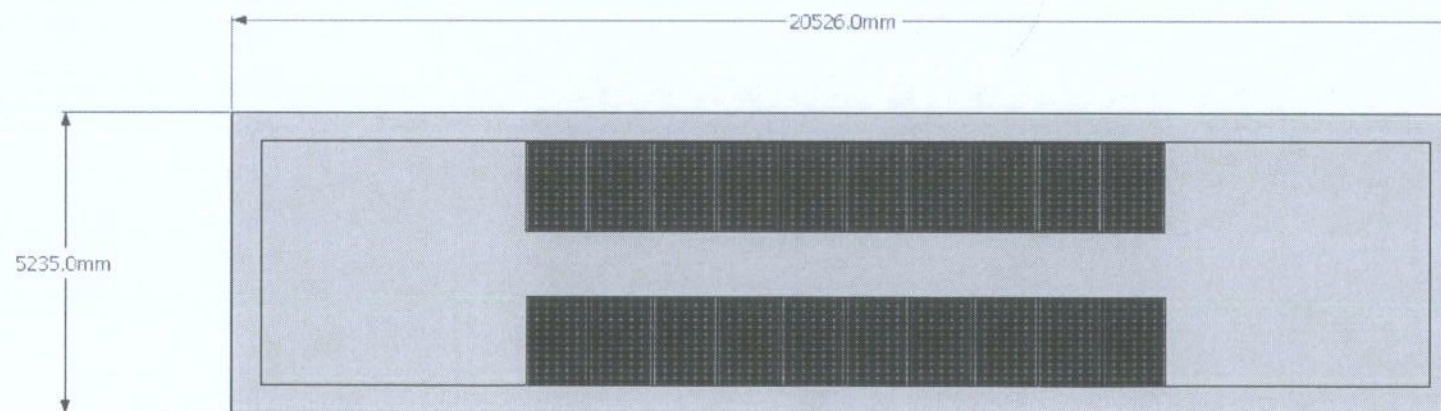
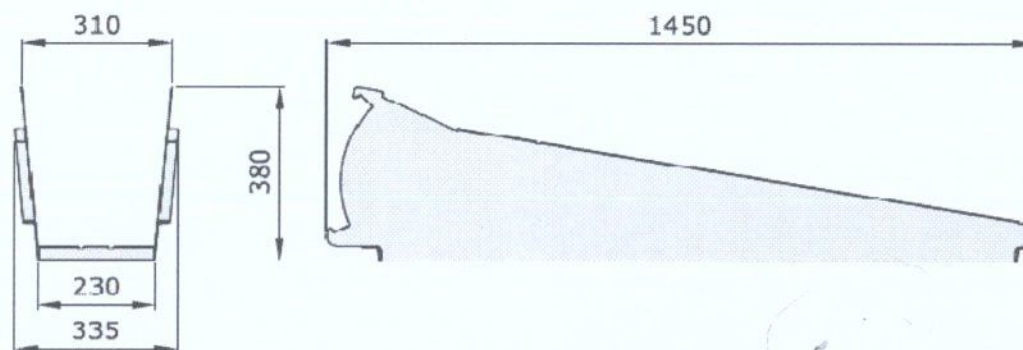
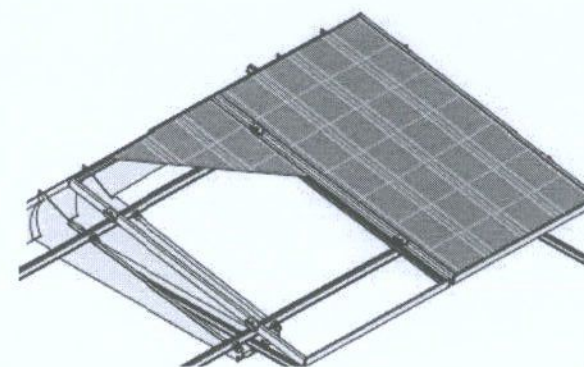


Spirit Solar

Spirit Solar Ltd
44 Portman Road
Reading
RG30 1EA

Tel: 0118 951 4496
Fax: 0118 951 4499
www.spiritsolar.co.uk

Drawing by:
Vishal Giga



St Mary's University College, Waldegrave Rd, Strawberry Hill, Twickenham, TW1 4SX	Project Title	St Mary's University College	Versions		Version A Page 2
	Drawing Title	20 x SunPower 327W (6.54kWp)	dd/mm/yy	Remarks	
	Scale	Do not scale from this drawing	A	13/05/13	
			B		
			C		
			D		