

RECEIVED

20 JUN 2013

Landscape Maintenance Plan

Amendment to section 2.1 Grass Maintenance – to be substituted for, and read in place of page 4 of the landscape maintenance plan pertaining to planning application 07/4107/DD02 as per conditions LA11a and LA33.

07/4107/DD04

Close Mown Grass

Cutting: Cut using a combination of ride-on cylinder and rotary mowing equipment in areas as appropriate to achieve a short mown amenity area and tidy perimeters to areas sown to wildflowers. Use rotary pedestrian mowing equipment where required in areas of restricted space or where narrow close mown grass forms a tidy border to other areas such as between the annual and perennial wildflower areas or close to obstacles prohibiting the use of larger mowing equipment. Mow as frequently as required to maintain at a height of 30-50mm depending on season and to avoid leaving significant clippings.

Edge grass to maintain tidy perimeters to hedges, paths, and roadways. Cut as frequently as required to maintain a tidy appearance at a height of approximately 30mm without leaving clippings.

De-compaction: Use slitter/spiker, groundbreaker, or vert-drain to address surface compaction as required including at the time of closed season sports pitch renovation work to sports and training pitches.

Fertiliser: Fertilise the winter sports pitches and surrounding grass areas with a spring summer feed such as 9.7.7 as part of the closed season renovation program in spring and additionally as required using Vicon tractor mounted distributor or pedestrian applicator as appropriate with a suitable feed for the time of year, conditions and purpose.

Weed control: Maintain large grass areas including sports and training pitches and their surrounds free of broad leaf and perennial weed with a selective herbicide in late spring (subject to the establishment of any newly sown grass), in accordance with manufacturer application rates and specification.

Irrigation: None required in normal conditions. Irrigate as required when establishing new grass from seed or where conditions are such that the loss of grass cover would impact the ability to provide a quality sports surface or there would be a significant loss of grass coverage.

Arisings: Mow frequently enough to avoid the need to collect arisings, compost on site where clippings are collected.

Annual Wildflower Mix

All works repeated annually in entirety for annual wildflower areas.

Initial preparation: Apply a residual herbicide to the area to be sown with the wildflower mix in accordance with manufacturer application rates and specification during early spring.

RECEIVED

20 JUN 2013

13.2366/VRC

PLANNING

Following a two to three week period in which the herbicide will take effect the area is to be cultivated with a compact tractor mounted rotivator to a depth of 100-300mm to form a seed bed. The seed will then be calibrated and sown directly following cultivation of the seed bed at the supplier recommended rate.

The annual mixes selected for use will be Pictorial meadows 'classic' and 'pastel', the classic being sown to the more northerly end of the annual area and the pastel to the more southerly end.

Roll the seed bed with a Cambridge type roller once sowing is complete.

Once the above work has been completed the area will be immediately roped off to prevent trampling as the seedlings begin to grow and ensure that they are protected. Signage will also be displayed along the perimeter roped area to emphasise the requirement to keep from walking on the young seedlings. Once established these ropes may be removed subject to whether it is considered appropriate to do so.

Maintenance: End of year cut down of all vegetation once the annual wildflower mix has finished in late autumn/early winter using a strimmer or flail mower.

Weed Control: Hand remove shallow rooted weeds. Spot treat perennial weeds with selective herbicide in late spring to prevent establishment in accordance with manufacturer application rates and specification. Cut off deep rooted infestations of annual weeds.

Perennial Wildflower Mix

Year 1

Initial preparation: The existing vegetation will be cut down using a strimmer or a flail mower in late summer early autumn.

Apply a residual herbicide to the area to be sown with the wildflower mix in accordance with manufacturer application rates and specification during early autumn.

During early autumn following the herbicide having taken effect the area will be covered with a sterile mulch to a depth of 100mm.

The seed will then be calibrated and sown in early winter at the supplier recommended rate.

The perennial mixes selected will be Pictorial Meadows 'Treasure Chest' and Woodland Edge'.

Irrigation: During year 1 the area will be irrigated in the spring if the weather conditions mean that it is dry to ensure that the sterile mulch is well saturated each morning.

Maintenance: Check for germination rates in spring and hand pull any weeds at seedling stage. During the first year cut and collect the meadow following adequate vegetative growth to reduce competition of dominant species, increase light levels and promote root growth. At the end of the

RECEIVED

20 JUN 2013

year all vegetation will be cut down using a strimmer or flail mower once the wildflower mix has finished in late autumn/early winter.

13 '2366/VRC

Year 2 and thereafter.

Maintenance: The cutting regime will include an autumn cut and collect which will be undertaken using a strimmer or flail mower to heights of 100mm in autumn.

Weed Control: Weed Control: Hand remove shallow rooted weeds. Spot treat perennial weeds with selective herbicide in late spring to prevent establishment in accordance with manufacturer application rates and specification. Cut off deep rooted infestations of annual weeds.

Areas sown to wildflowers: Following year two it may be the case that the area balance of annuals and perennials may be viewed as worthy of a shift more towards a greater proportion of perennial wildflower meadows and the annuals reduced to allow this. Once established and the display of perennials can be assessed this decision can be made as to the worthiness and proportion of this possible change.

Mixed Bulbs

Bulbs will be planted in late autumn. The selected bulb mix will consist of naturalising species and will include *Galanthus nivalis*, *Crocus spp*, *Tulip spp*, *Muscari spp*, *Hyacinthoides non-scripta* and *Narcissus spp*

Some revision may be made to the bulb mix where loss of particular species is expected or takes place due to squirrels eating them.

Maintenance: Bulb foliage will be cut back following a minimum of 8 weeks after the end of flowering. Bulbs will also be monitored for the decline of any species.

RECEIVED

20 JUN 2013

01/4107/0004

Perennial 'Woodland Edge' Wildflower Mix

Ideal for shady areas.

A free flowering mixture to sow in semi-shaded

situations or to use to provide shorter term

colour and interest around new tree and shrub

plantings.

Mix contains 17 different species Including:

Red Champion *Silene dioica*

Oxe-eye Daisy *Leucanthemum vulgare*

American Wood Aster *Aster divicarius*

Wood Avens *Geum urbanum*

Foxglove *Digitalis Purpurea*

Perennial 'Treasure Chest' Wildflower Mix

A robust leafy and very richly-coloured meadow

designed for normal fertility soils

21 species Including :

Devil's Bit Scabious *Succisa pratensis*

Wood Betony *Betonica officinalis*

Great Burnet *Sanguisorba Officinalis*

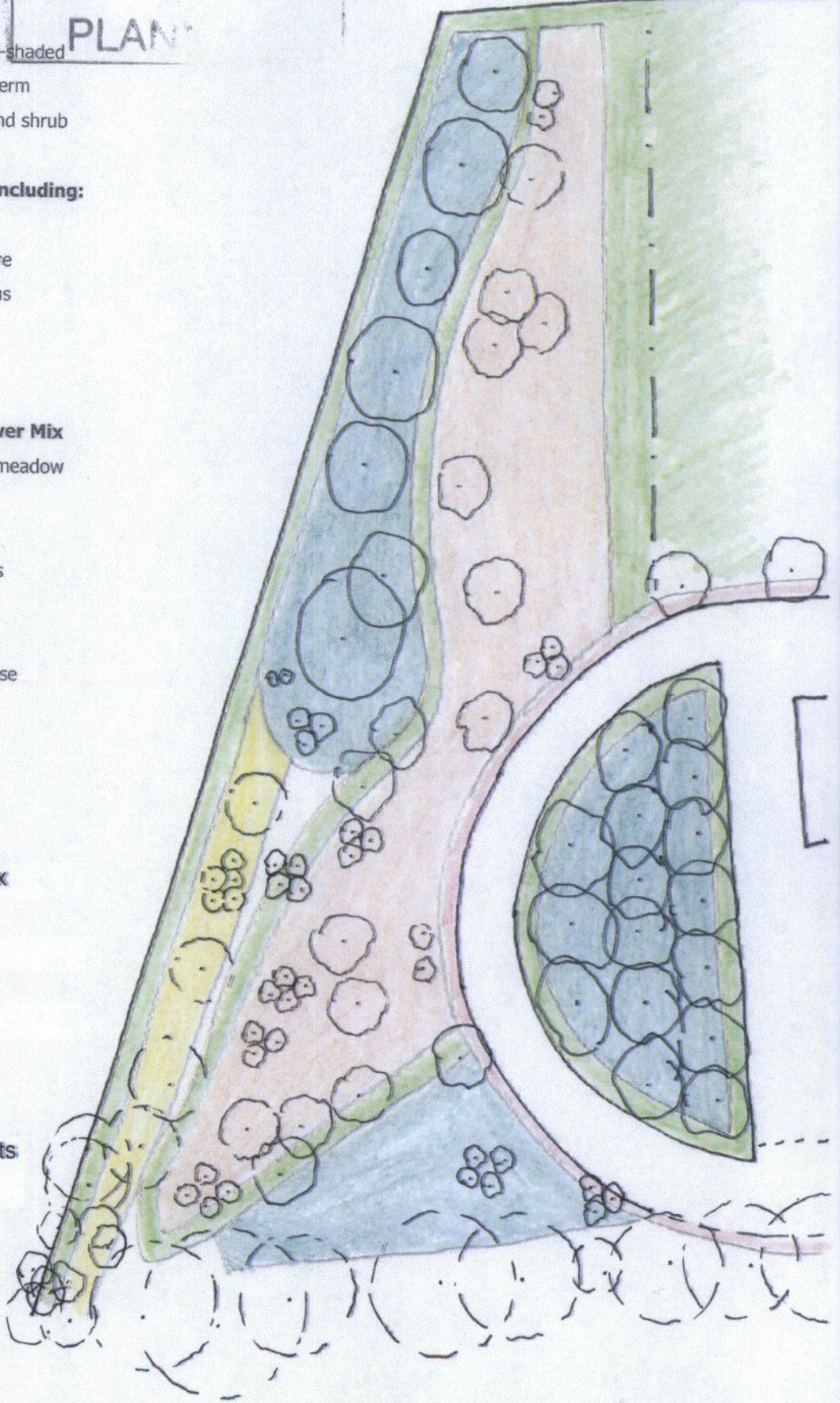
Meadow Cranesbill *Gernanium pratense*

Hollyhock Mallow *Malva alcea*

Woodland Sage *Salvia nemorosa*

PLAN

-  Perennial Wildflower Mix
-  Annual Wildflower Mix
-  Close Mown Grass
-  Mixed Bulbs
-  Existing Hedgerow Plants



Annual 'Pastel' Wildflower Mix includes;

A beautiful 'strawberries & cream' mix of white and pink with a scattering of clear blue later in the season. The pastel mix looks spectacular towards the end of its flowering period when the earlier flowering blues give way to eye-catching reds. Gently blending elements such as :

Bishops Flower, *Ammi majus*

Cosmos *Cosmos bipinnatus*

Cornflower *Centaurea cyanus*

and Shirley Poppy *Papaver rhoeas*

Annual 'Classic' Wildflower Mix includes;

The original Pictorial Meadows mix produces stunning displays through until November, starting out with white, blues, pinks and reds, turning to reds, orange and yellow in the autumn. The mix has been carefully balanced for colour and succession of display.

Shirley Poppy *Pavader rhoeas*

Californian Poppy *Eschscholzia californica*

Cornflower *Centaurea cyanus*

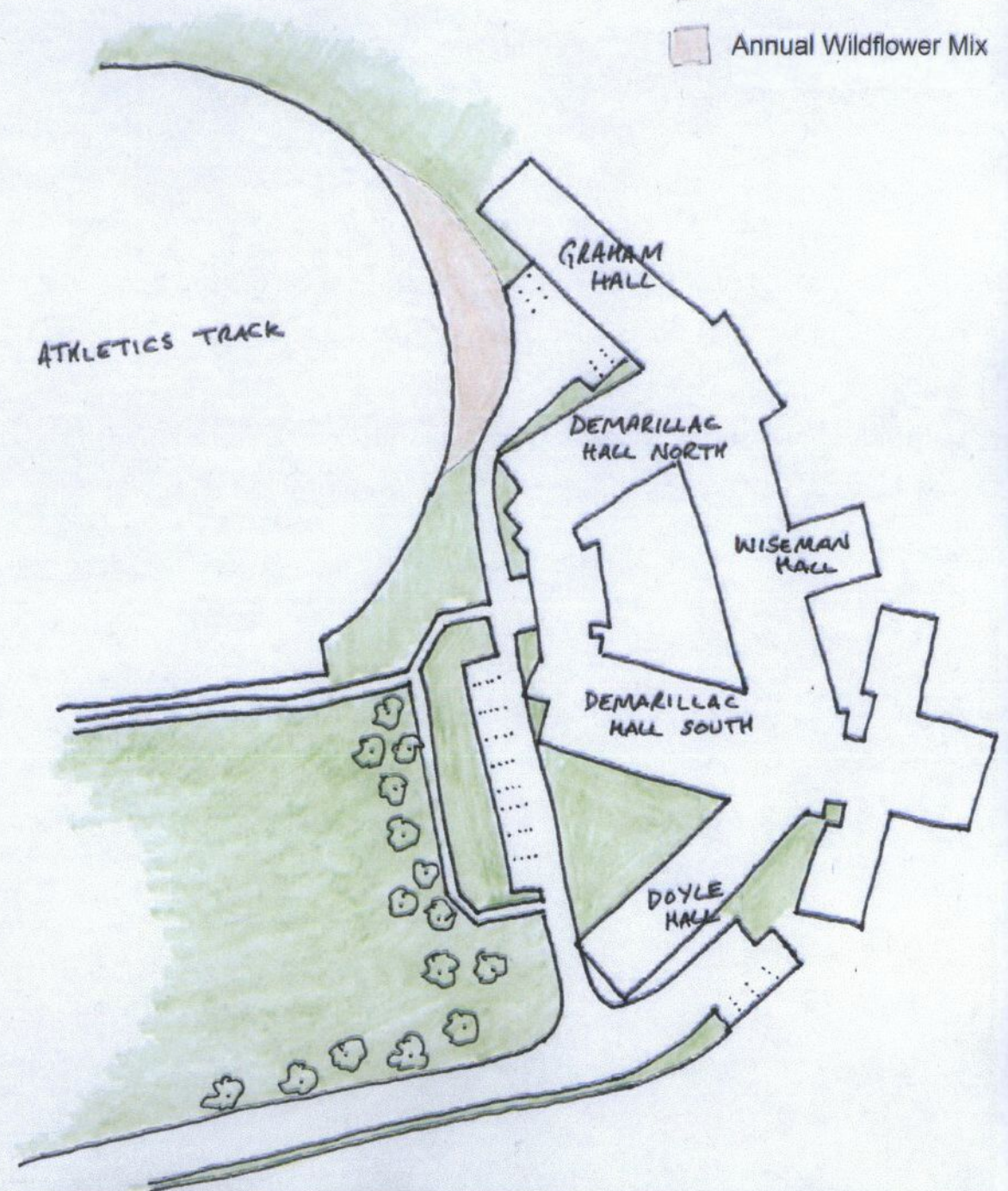
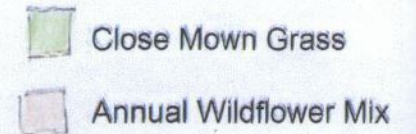
Fairy Toadflax *Linaria maroccana*

Tickseed *Coreopsis Tinctoria*

Red Orache *Atriplex hortensis*

and Larkspur *Delphinium ajacis*

General Height: 60cm.



RECEIVED

20 JUN 2013