

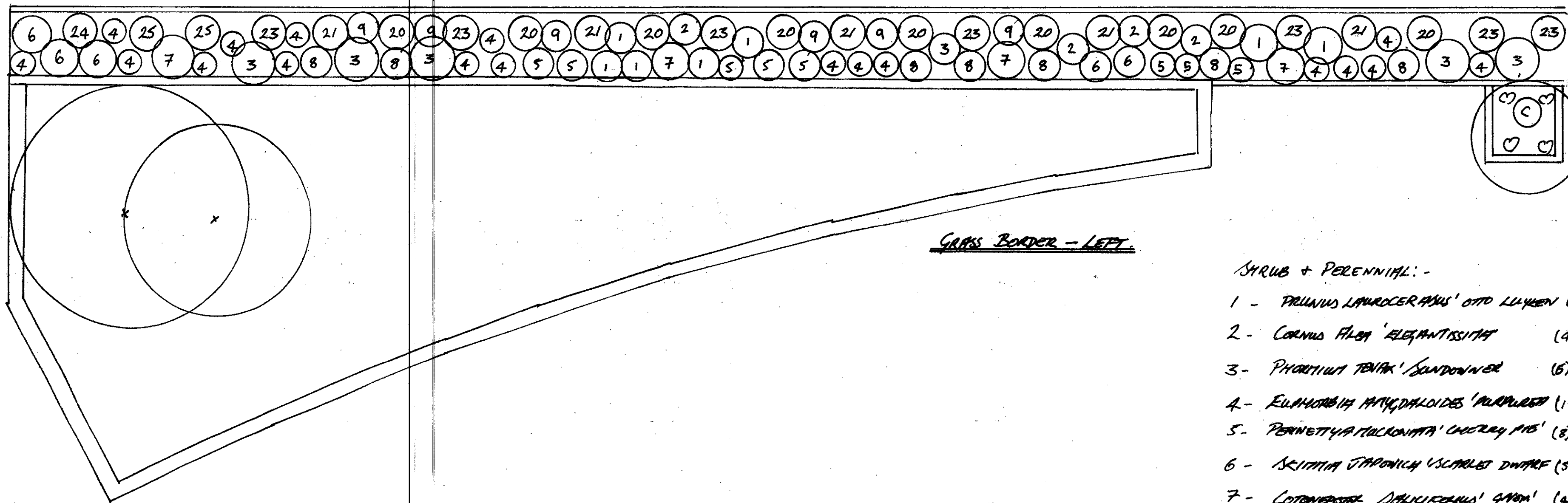
8 BIRCHWOOD GROVE
HAMPTON
MIDDLESEX
TW12 3DU

DV. No 003
Project - TWICKENHAM
RIVERSIDE
Client - RICHMOND BOROUGH
COUNCIL
Detail - PLANTING PLAN
GRASS BORDERS -
ELEVATED SECTION
Scale - 1:50
Date - 15th APRIL '04.

North
N

t: 020 8979 7875
f: 020 8979 7875
info@greenscheme.com
www.greenscheme.com

Do Not Scale From Plan



GRASS BORDER - LEFT

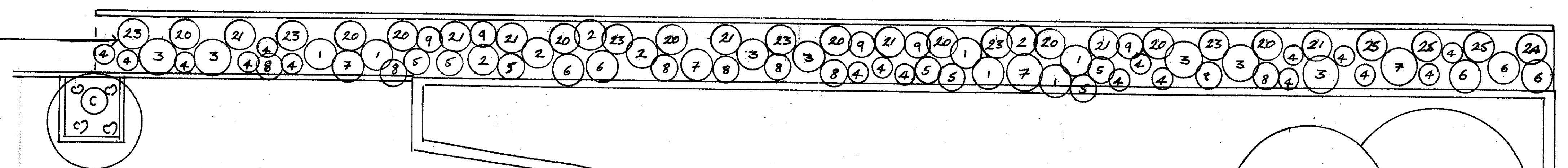
SHRUB + PERENNIAL:-

- 1 - PRUNUS LAUROCAPSA 'OTTO LUYKEN' (7)
- 2 - CORNUS ALBA 'ELEGANTISSIMA' (4)
- 3 - PHORNIUM TENAX 'SANDWICH' (6)
- 4 - EUPHORBIA MYRTALOIDES 'PURPUREA' (18)
- 5 - PERNETTYA MUCRONATA 'CHERRY PIE' (8)
- 6 - SCILLA JAPONICA 'SCARLET DWARF' (5)
- 7 - COTONEASTER SALICIFOLIUS 'GNOM' (4)
- 8 - STACHYS BYZANTINA (8)
- 9 - ERYNGIUM GIGANTEUM (6)

LLIUMBOS:-

- 20 - TRACHYSPERMA STYLIPOIDES (9)
- 21 - CLETHRA VITICELLA 'MADAM ALAONNI' (5)
- 23 - ROSA CECLIE BRUNNER (CLIMBING) (7)
- 24 - HEDERA CANARIENSIS 'GLOIRE DE MARSEILLE' (1)
- 25 - HYDRANGEA PETIOLARIS (2)

TIMER HOARDINGS
SET BACK IN DEPTH
FROM BRICK WALL - TO
ALLOW FOR FUTURE
PLANTING OF CUTBARS &
SHRUBS etc.



GRASS BORDER - RIGHT

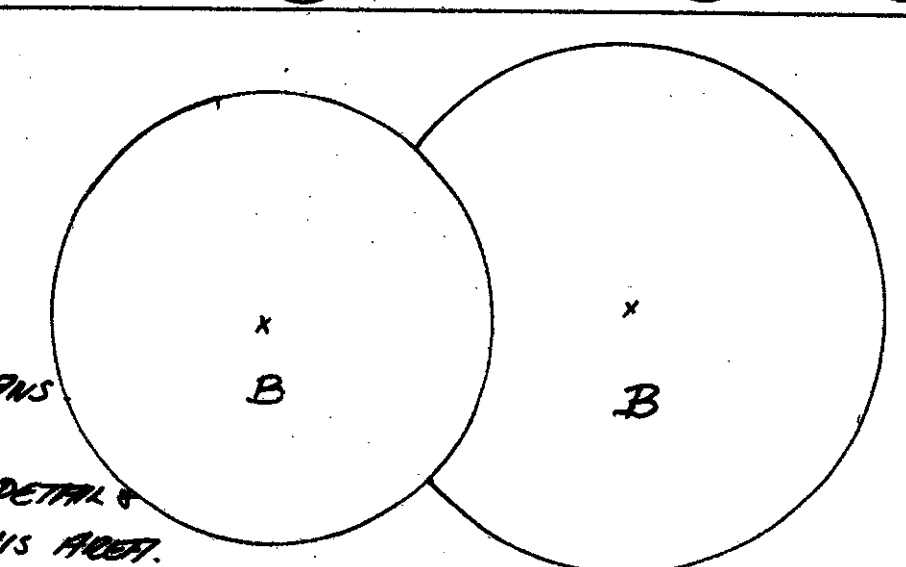
SHRUB + PERENNIAL:-

- 1 - PRUNUS LAUROCAPSA 'OTTO LUYKEN' (6)
- 2 - CORNUS ALBA 'ELEGANTISSIMA' (6)
- 3 - PHORNIUM TENAX 'SANDWICH' (7)
- 4 - EUPHORBIA MYRTALOIDES 'PURPUREA' (18)
- 5 - PERNETTYA MUCRONATA 'CHERRY PIE' (7)
- 6 - SCILLA JAPONICA 'SCARLET DWARF' (6)
- 7 - COTONEASTER SALICIFOLIUS 'GNOM' (4)
- 8 - STACHYS BYZANTINA (8)
- 9 - ERYNGIUM GIGANTEUM (5)

LLIUMBOS:-

- 20 - TRACHYSPERMA STYLIPOIDES (10)
- 21 - CLETHRA VITICELLA 'MADAME
CARRON' (7)
- 23 - ROSA CECLIE BRUNNER (CLIMBING) (6)
- 24 - HEDERA CANARIENSIS 'GLOIRE DE
MARSEILLE' (1)

See: PLANTING PLANS
GRASS BORDERS.
Oct '03 FOR DETAILS &
LEGEND OF THIS ASSET.



OFFICE COPY
DO NOT REMOVE FROM FILE