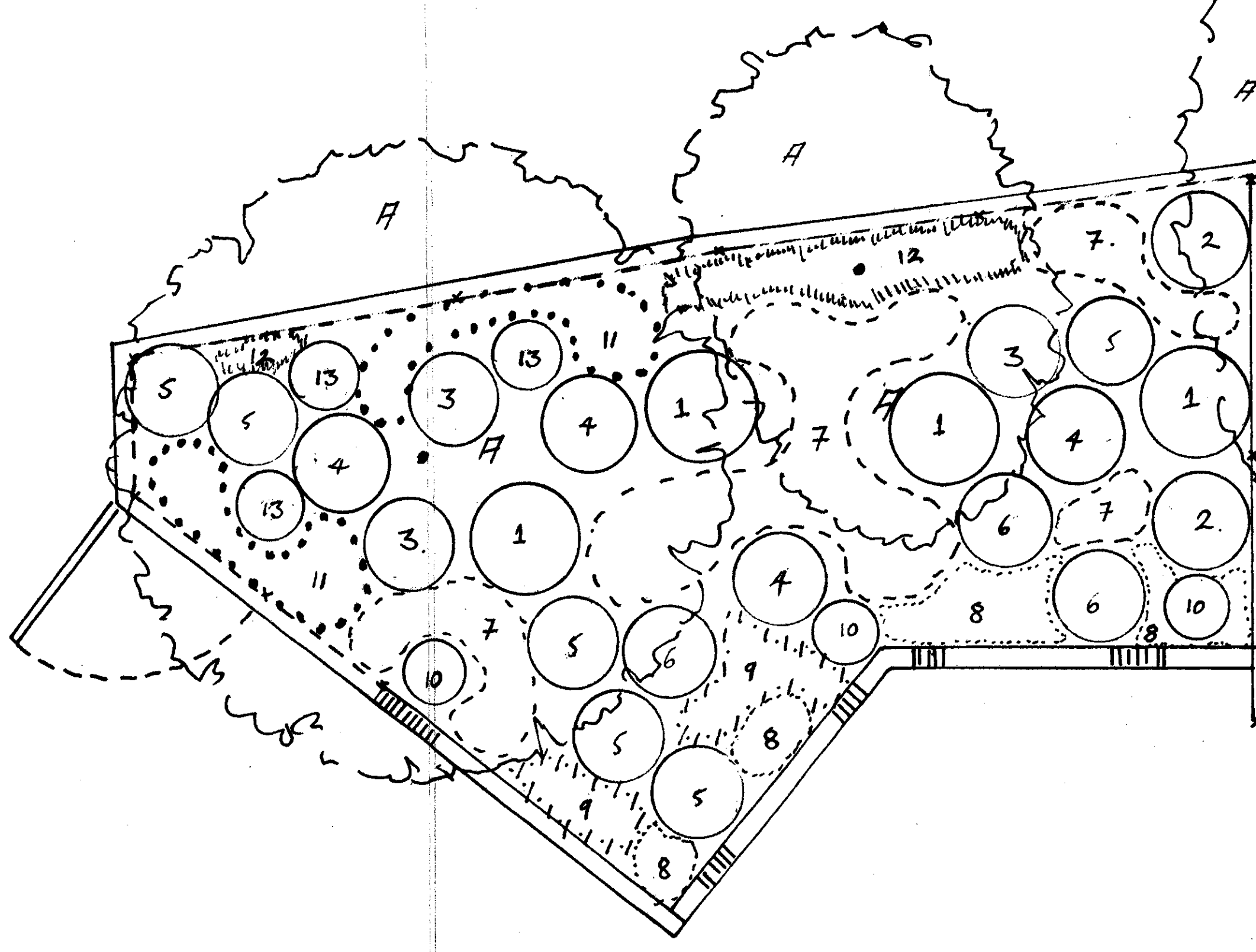


PLAYGROUND - PERIMETER BORDER - C -

TREES :-
8 - LATTALOA BIGNONIDES 'AUREA' (1)

SHRUBS :-
1 - FICUS x FICUS 'CHARM' (2)
5 - SARGOLLOCA LAMPANA (5)
13 - CORNUS ALBA 'ELEGANTISSIMA' (2)

PERENNIALS + FERNS :-
7 - DIGITALIS PURPUREA ALBA FLORA - SPACING 5m APX (14)
8 - IRIS FORTISSIMA - SPACING .45m APX (5)
9 - HELLEBORUS ARGENTIFOLIUS - SPACING .5m APX (10)
10 - DRYOPTERIS FILIX-IPSA (1)
11 - DICENTRA SPECTABILIS - SPACING .45m APX (7)



PLAYGROUND - PERIMETER BORDER - B -

TREES :-
9 - EXISTING - TO BE RETAINED (3)

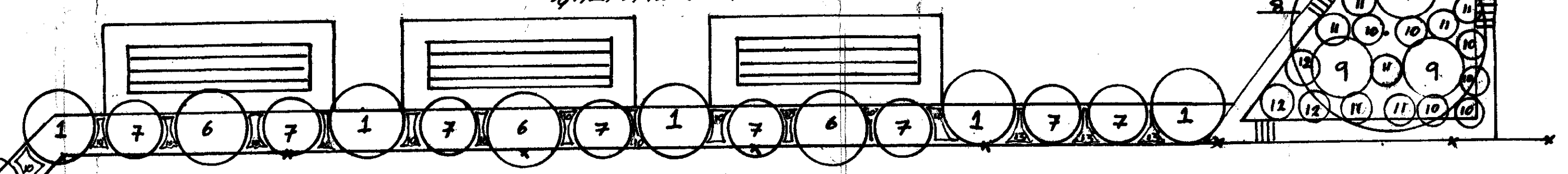
SHRUBS :-
1 - FICUS x FICUS 'CHARM' (4)
2 - PYRACANTHA 'WATERBURY' (2)
3 - VIBURNUM OPULUS 'ROSEUM' (3)
4 - HYDRANGEA PANICULATA 'GRANDIFLORA' (4)
5 - SARGOLLOCA LAMPANA (6)
6 - GALLIUM VULGARIS 'SNOW WHITE' (5)
13 - CORNUS ALBA 'ELEGANTISSIMA' (5)

PERENNIALS + FERNS :-
7 - DIGITALIS PURPUREA ALBA FLORA - SPACING 5m APX (33)
8 - IRIS FORTISSIMA - SPACING .45m APX (19)
9 - HELLEBORUS ARGENTIFOLIUS - SPACING .5m APX (11)
10 - DRYOPTERIS FILIX-IPSA (3)
11 - BERGONIA 'SUNNINGDALE' - SPACING .5m APX (20)
12 - DICENTRA SPECTABILIS - SPACING .45m APX (24)

LANDSCAPE :-
EXISTING HYDRANGEA - TRANSPLANTED

BULBS

TO BOTH BORDERS B+C - PLANTED IN INTERVALS IN BETWEEN PLANTS :-
NARCISSUS 'ORANGERY' - SPACING 20-25cm (100)
NARCISSUS 'GOLDMOUND' - SPACING 20-25cm (100)
HYACINTHUS BRITANNICA 'BLUE SPARK' - SPACING 10cm (200)
GALLIUM VULGARIS 'SNOW WHITE' - SPACING 10cm (300)



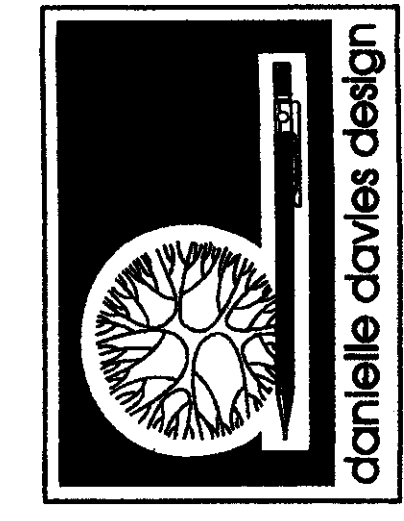
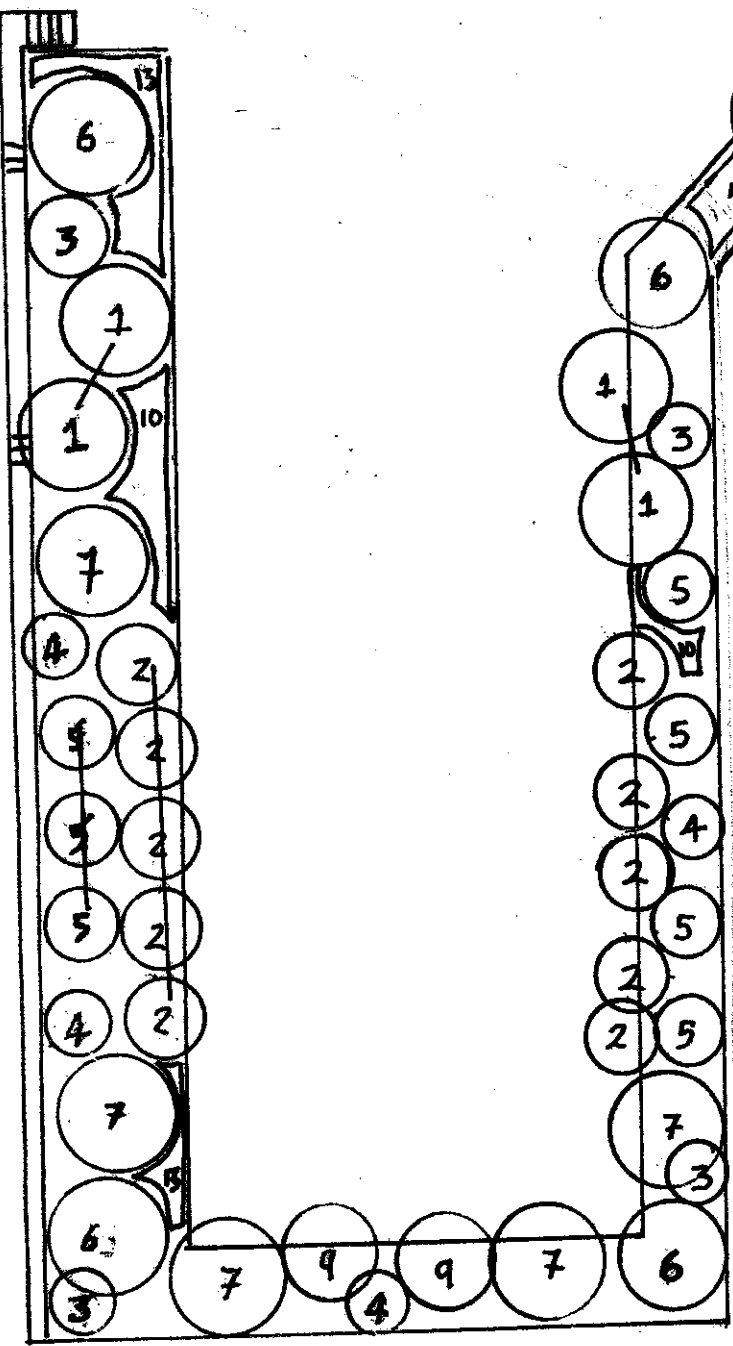
PLAYGROUND - PERIMETER BORDER - B -

TREES :-
8 - CORNUS ALBA (1)

SHRUBS :-
1 - HYDRANGEA PANICULATA 'BLUE WAVE' (9)
2 - FUCHSIA 'ITALIA POPULI' (10)
5 - PHOTINIA x FRAXINUS 'RED ROBIN' (7)
6 - LINDLEYA TERNATA (2)
7 - HEBE 'GREAT OUTH' (17)
9 - CORNUS ALBA 'ELEGANTISSIMA' (5)

PERENNIALS :-
10 - BERGONIA 'SUNNINGDALE' (65) - SPACING .3m BETWEEN + TO FRONT OF SHRUBS PLANTING
11 - HELLEBORUS ORIENTALIS (7)
12 - IRIS STABLE (6)
13 - LIRIOPE MURDOCHI 'BIG BLUE' (47) " .3m " " " " "

CLIMBERS :-
3 - ROSA 'CLIMBING ICEBERG' (4)
4 - PHISLOPIA CAERULEA (4)



80 STATION ROAD
HAMPTON + MIDDLESEX
TW12 2AX

Dw. No 002 A

Project - TWICKENHAM
RIVERSIDE

Client - RICHMOND BOROUGH
COUNCIL

Detail - PLANTING PLAN
PLAYGROUND
PERIMETER BORDERS

Scale - 1:50

Date - Aug '04

North
N

OFFICE COPY
DO NOT REMOVE FROM FILE

t: 020 8979 7878
f: 020 8979 8118
e: info@greenscheme.com
w: www.greenscheme.com

Do Not Scale From Plan

LONDON BOROUGH OF
RICHMOND UPON THAMES
09 SEP 2004
PLANNING